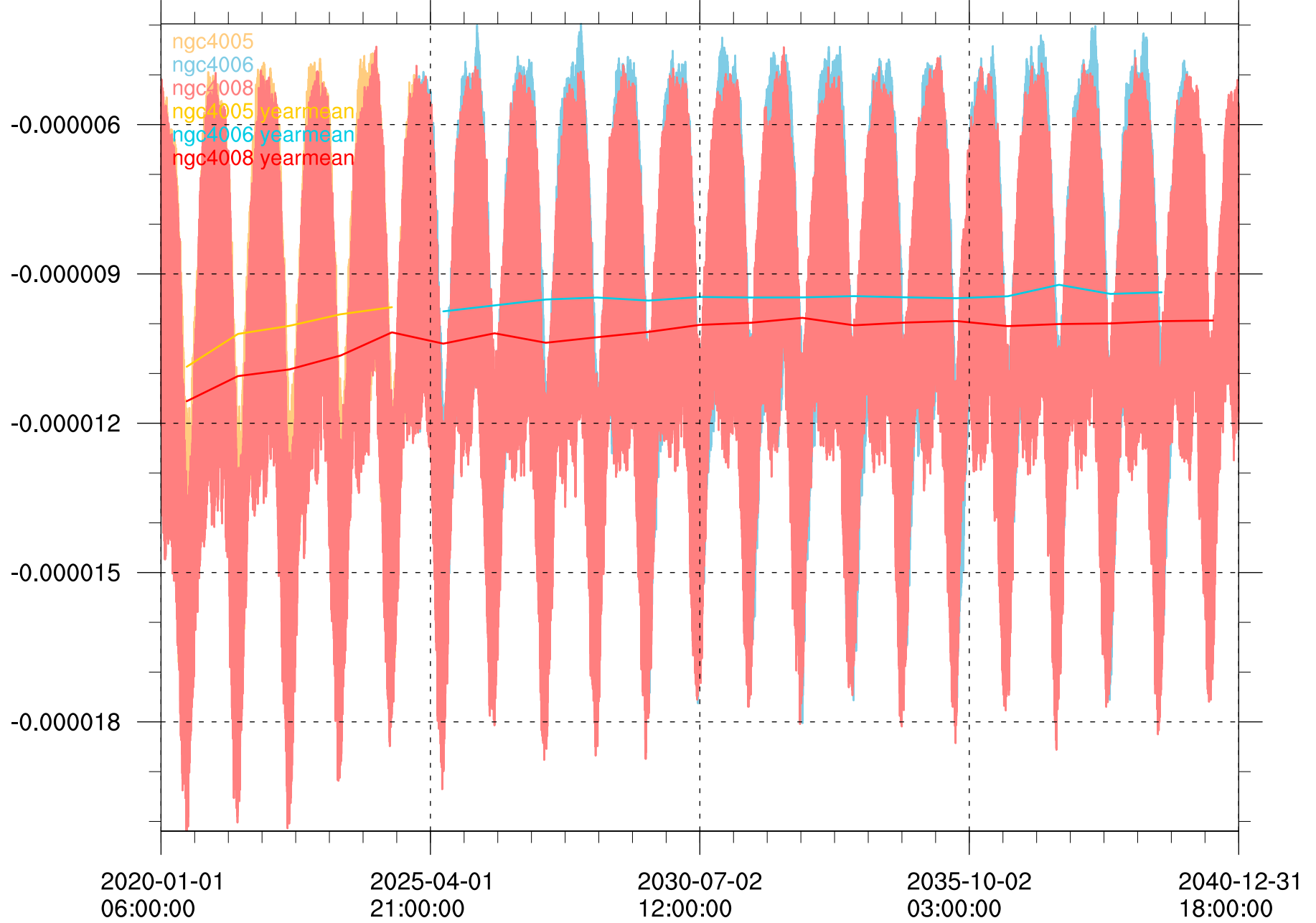


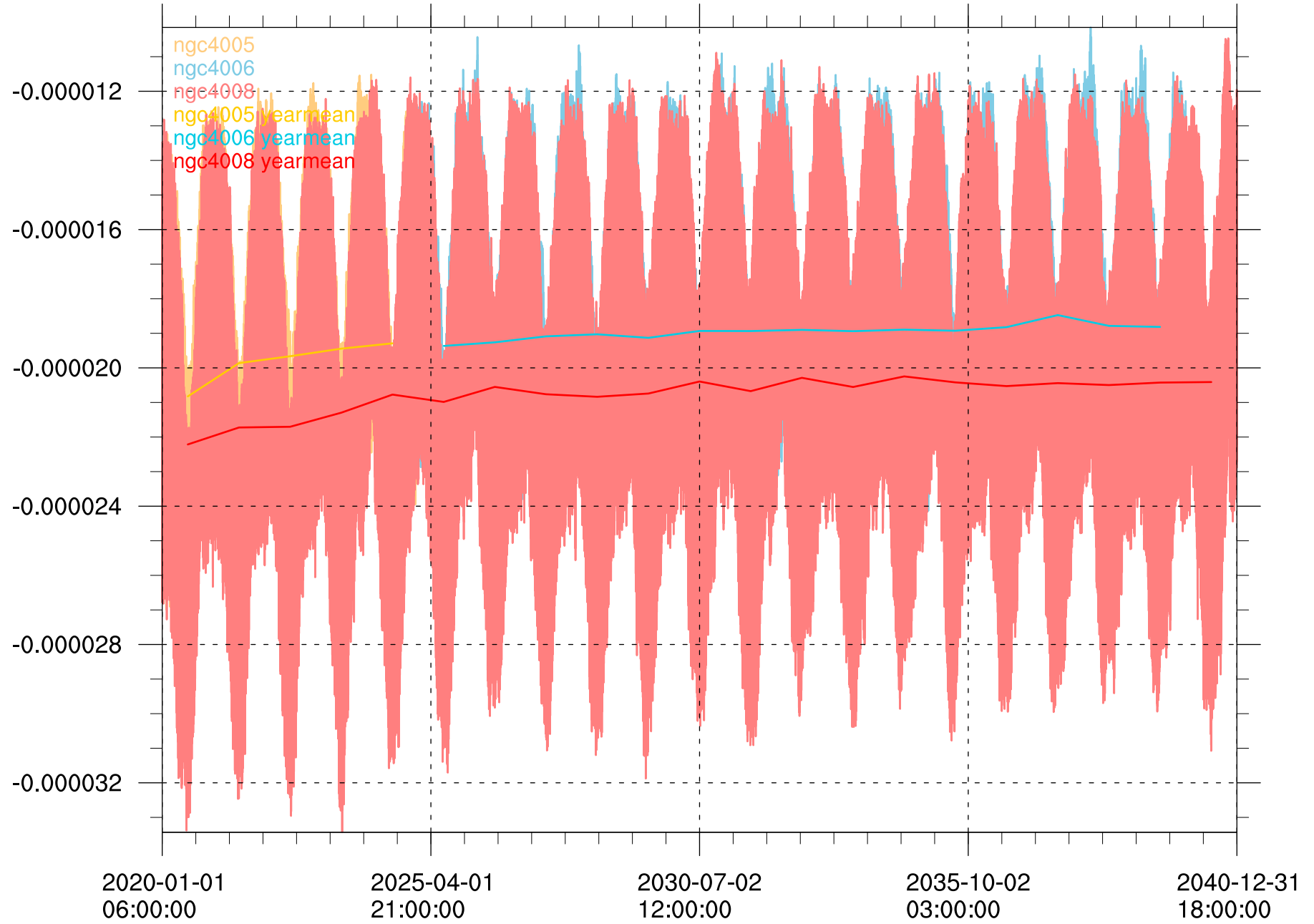
Global mean transpiration [kg m⁻² s⁻¹]

(255)



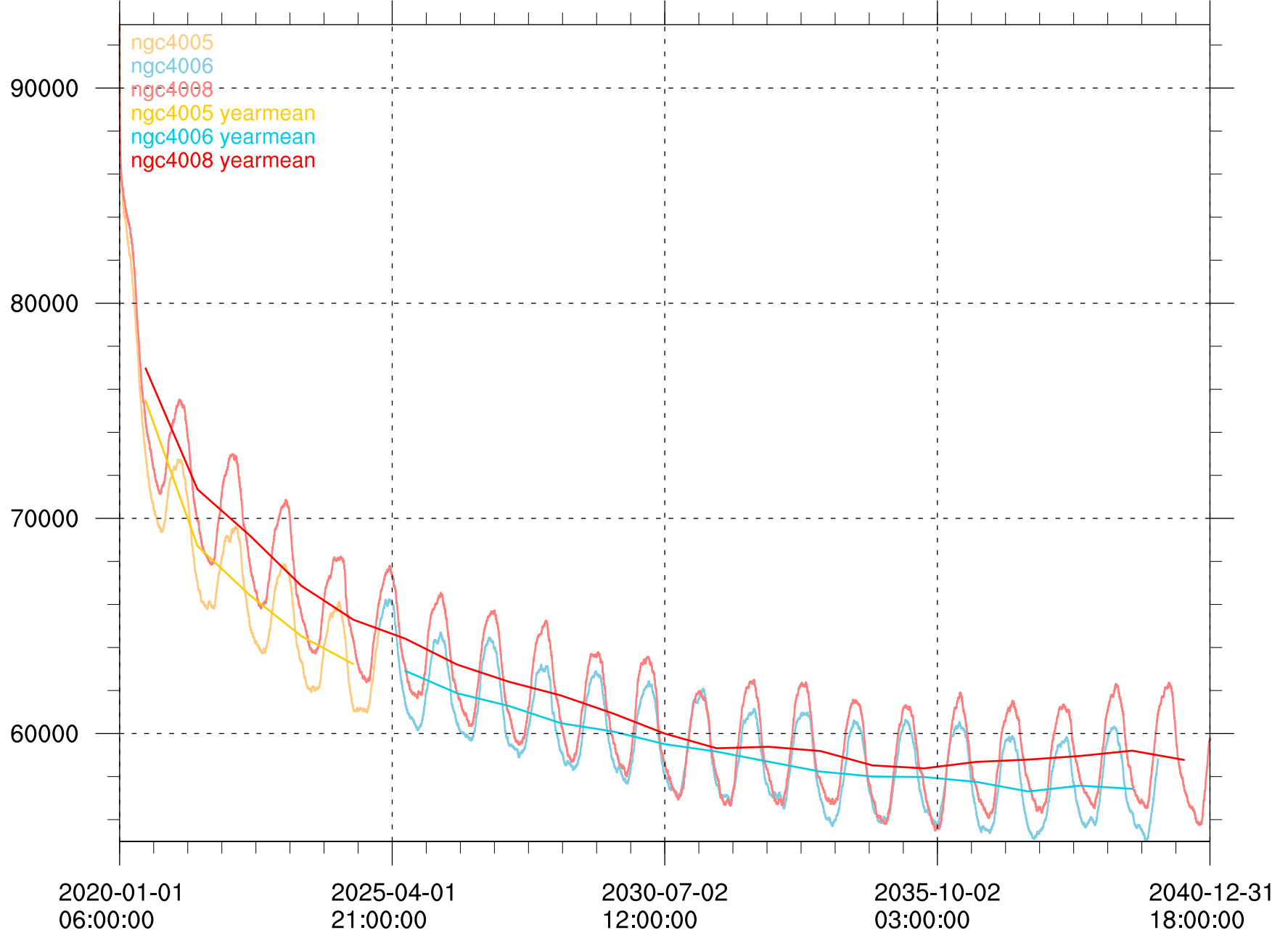
Global land evapotranspiration [kg m⁻² s⁻¹]

(255)



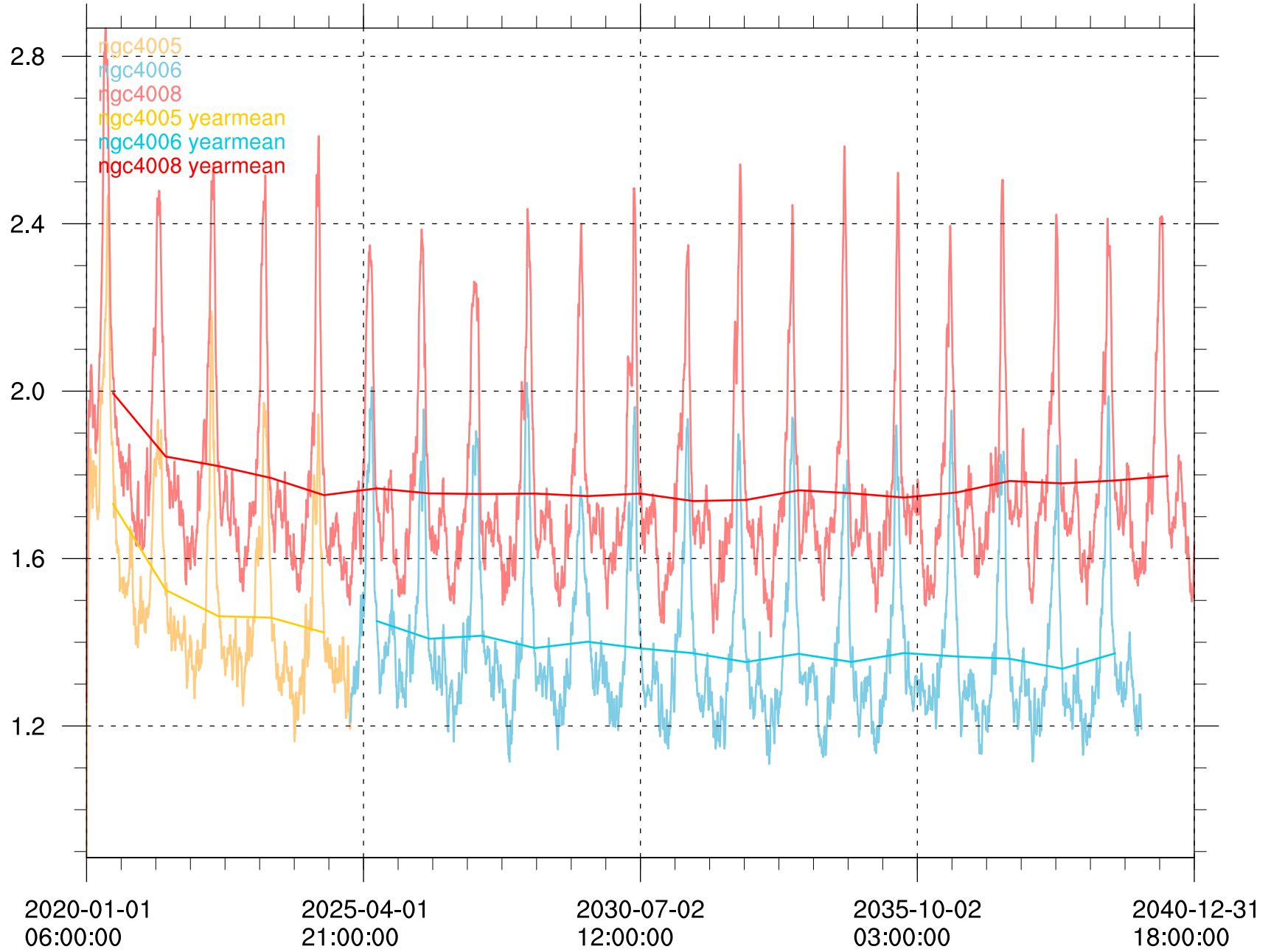
Global amount of land water and ice [km3]

(255)



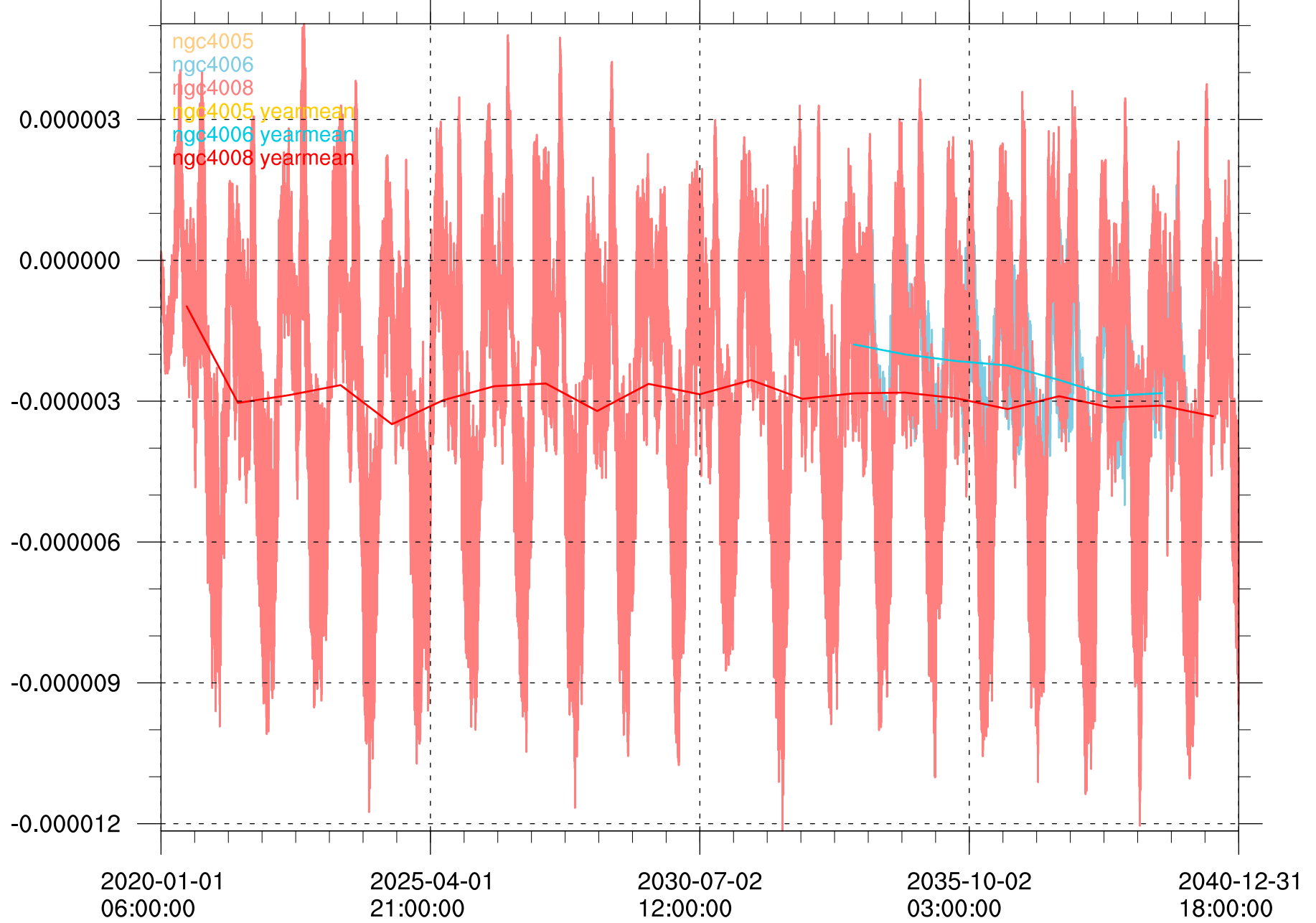
Global water discharge to the oceans [Sv]

(255)



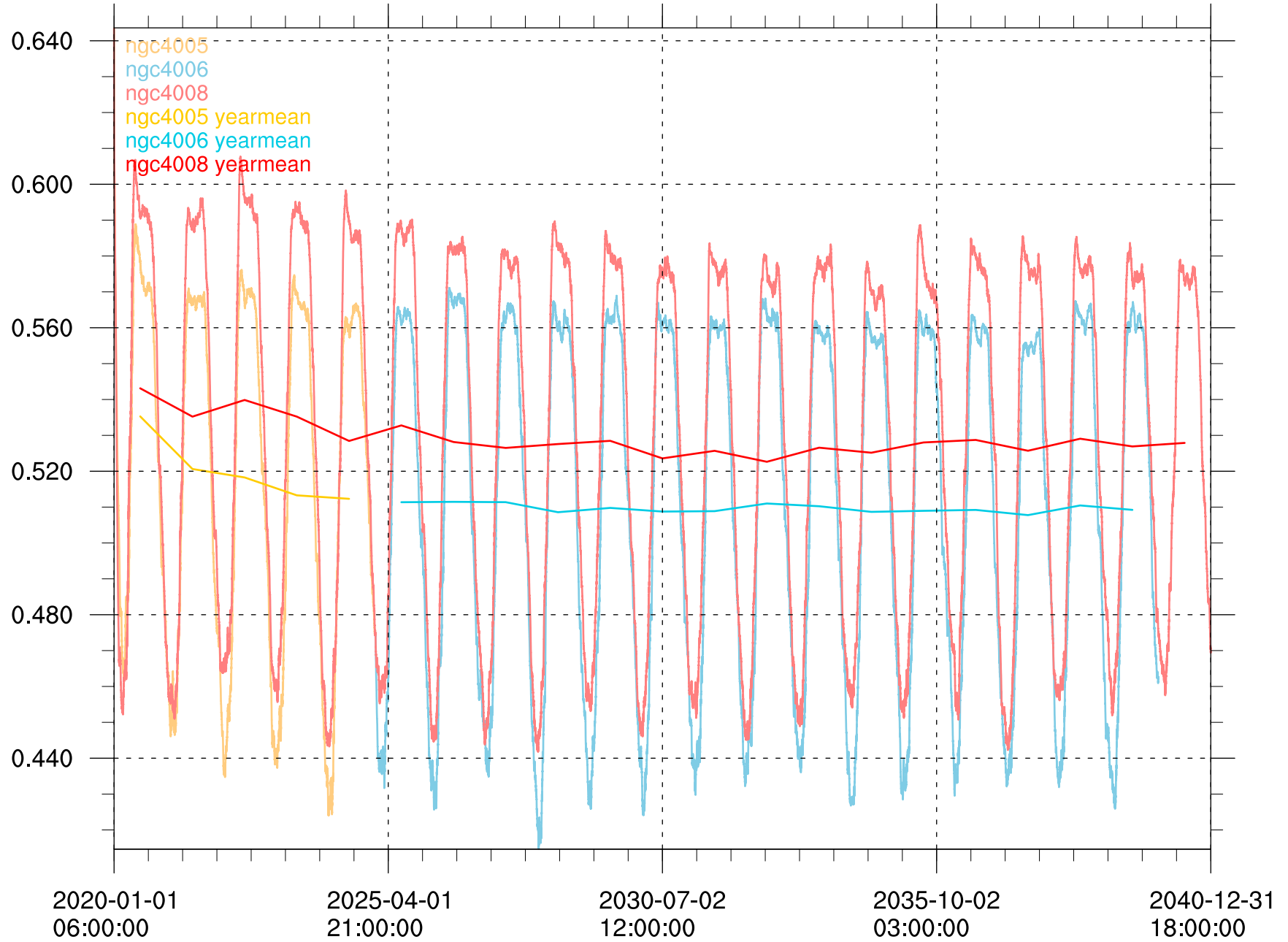
Total HD water imbalance during time step [m3]

(255)



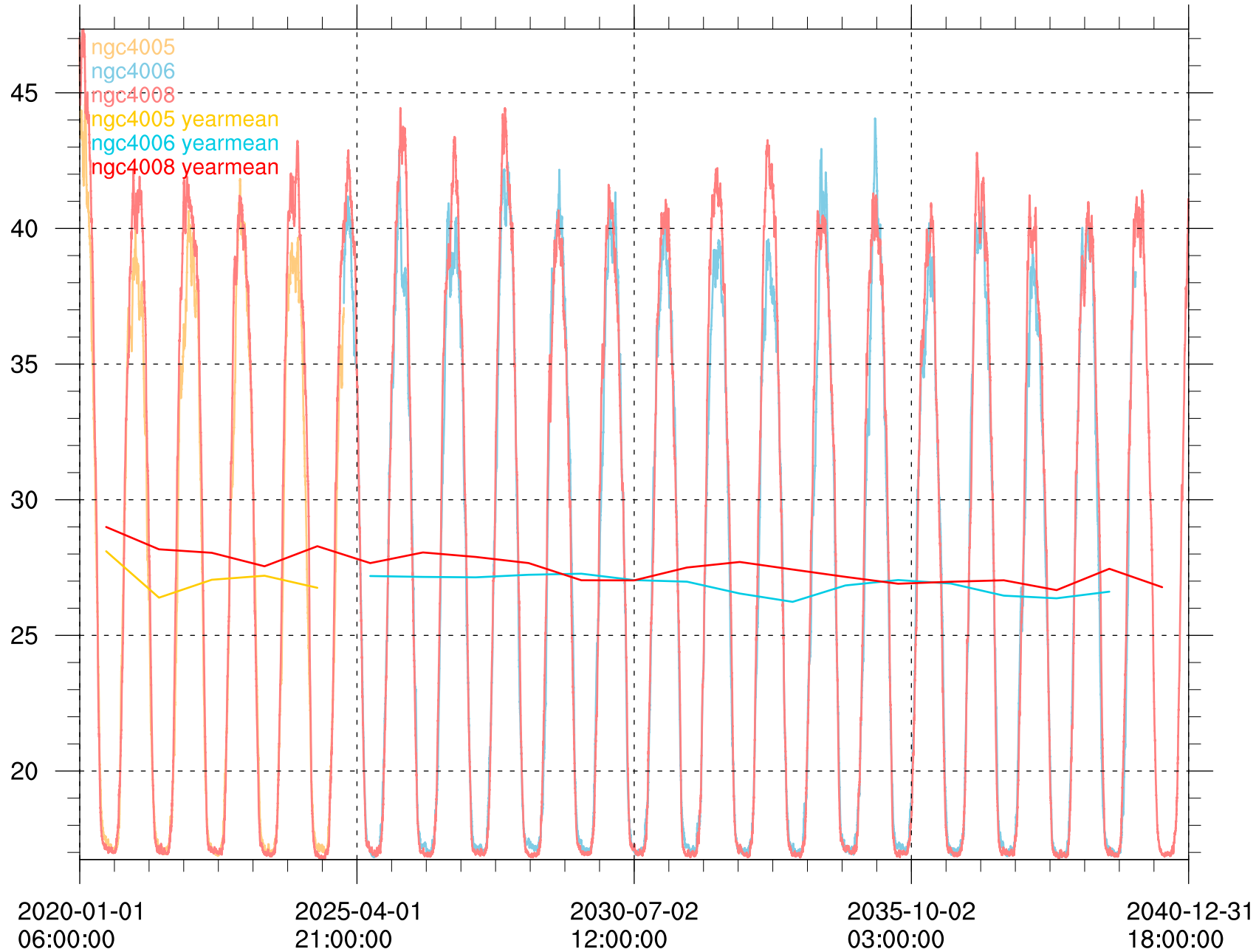
Global mean relative rootzone moisture [-]

(255)



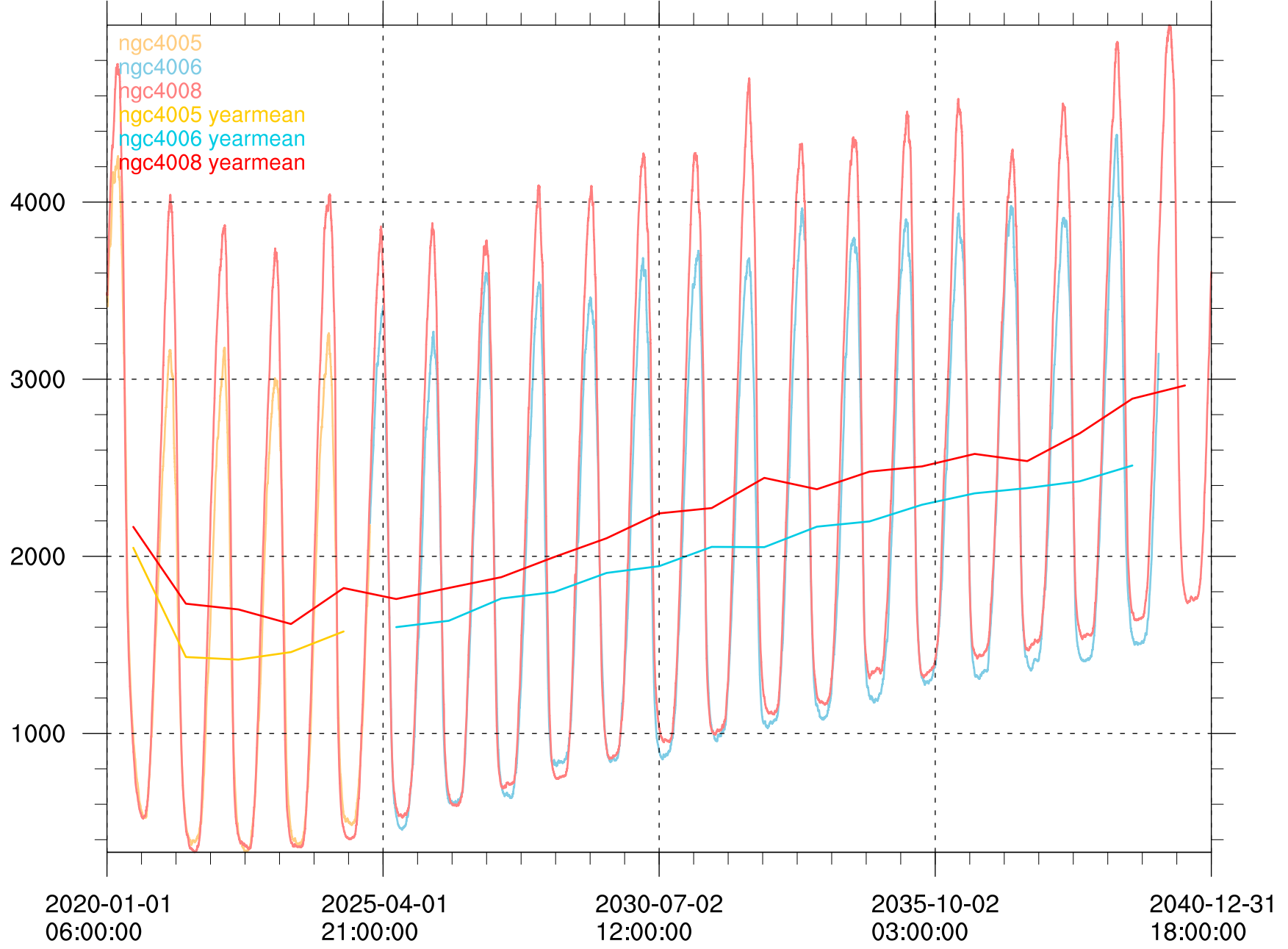
Global snow area (including glaciers) [Mio km2]

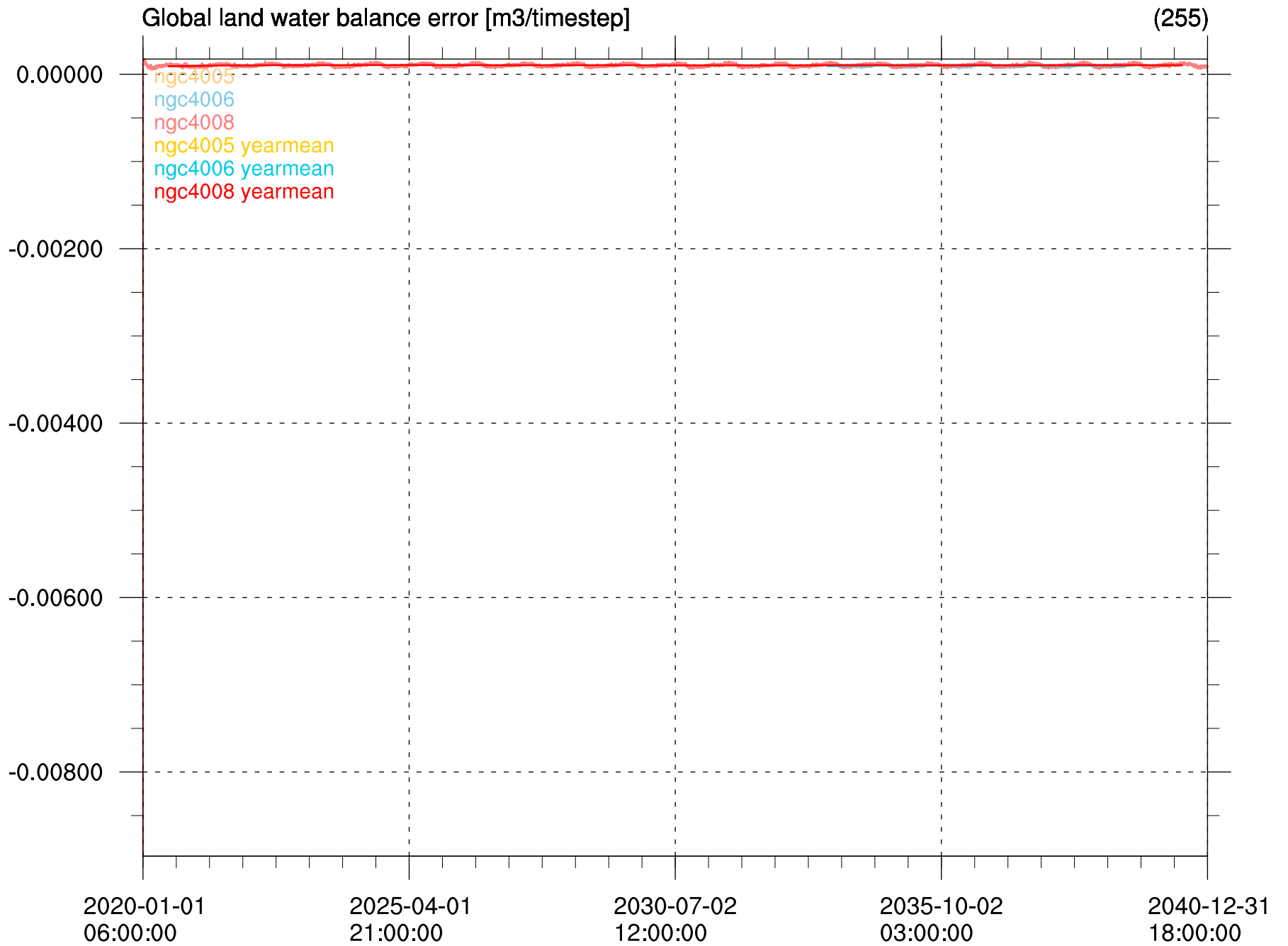
(255)



Global snow amount on non-glacier land [Gt]

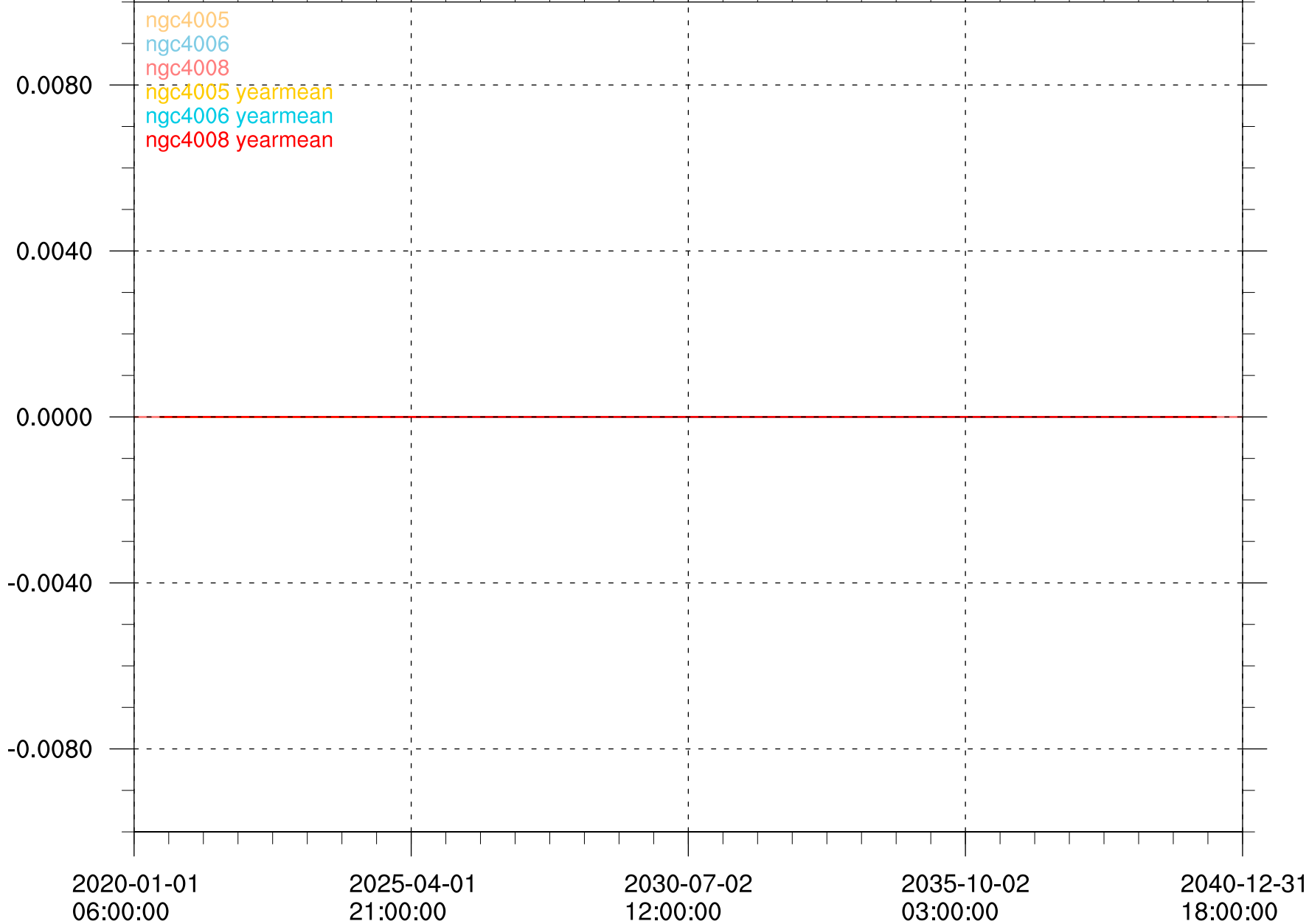
(255)





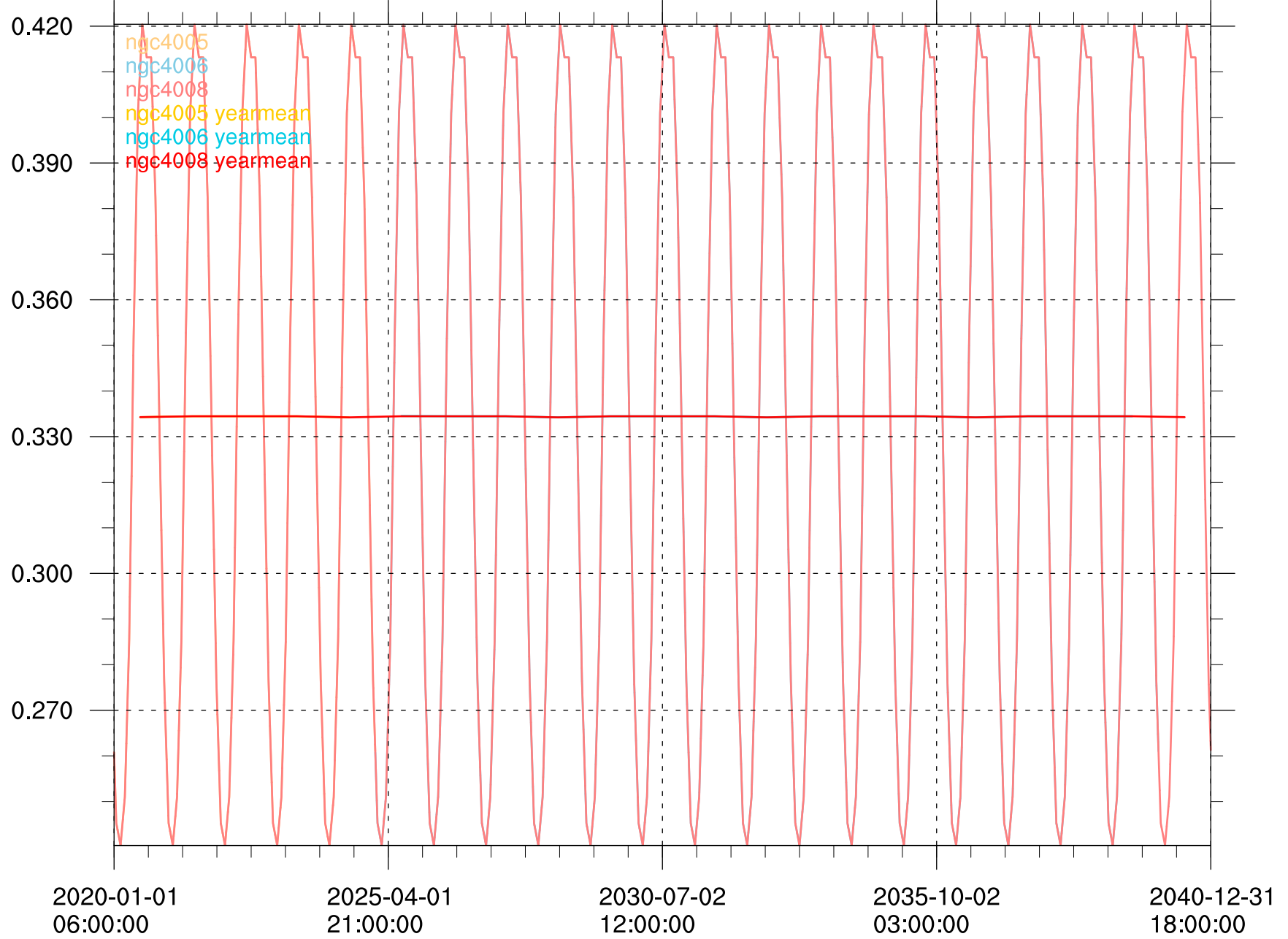
Global land mean leaf_area_index [1]

(255)



Global land mean foliage projected cover [1]

(255)



Global land mean surface temperature [K]

(255)

