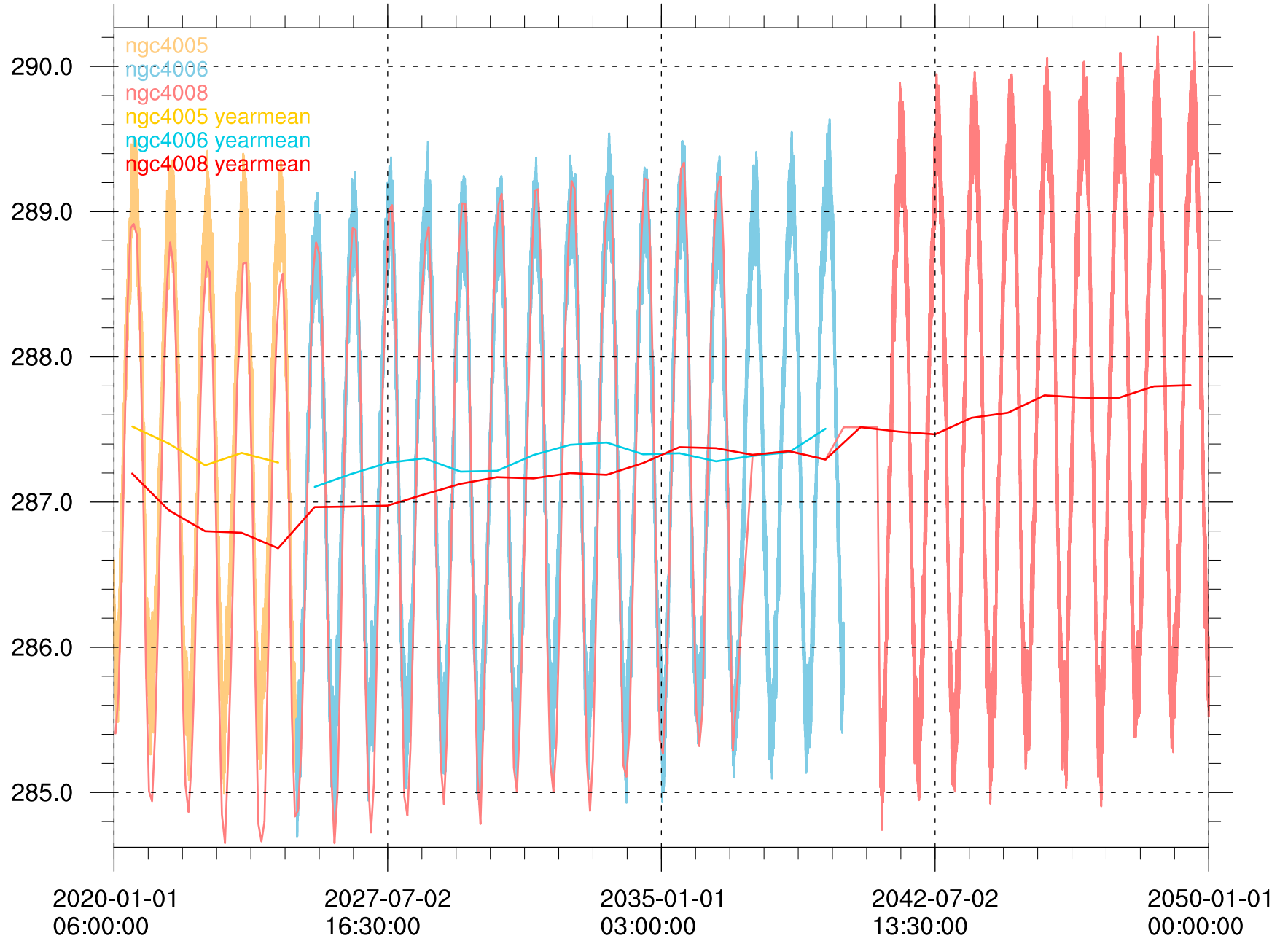


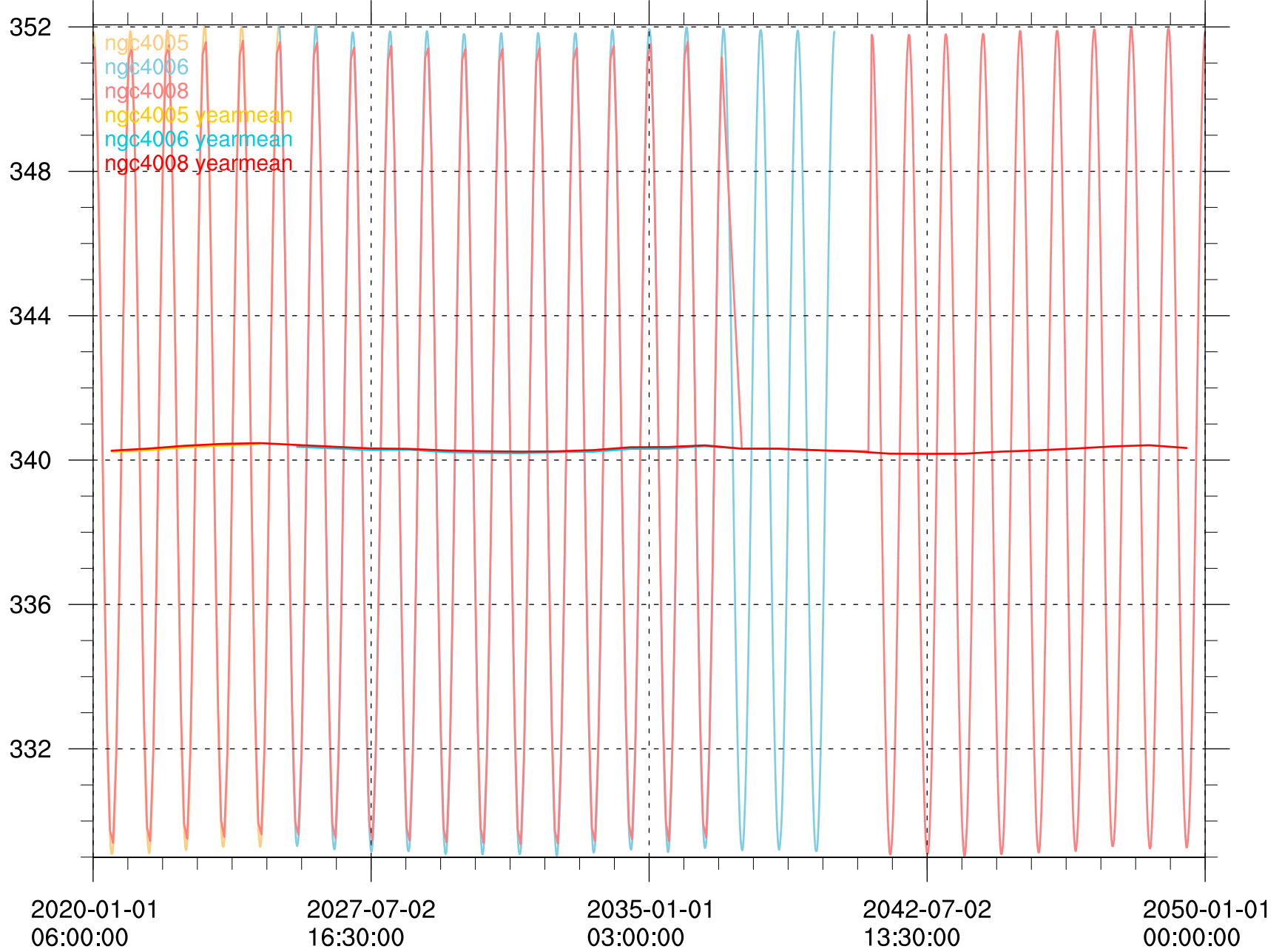
global mean temperature at 2m [K]

(255)



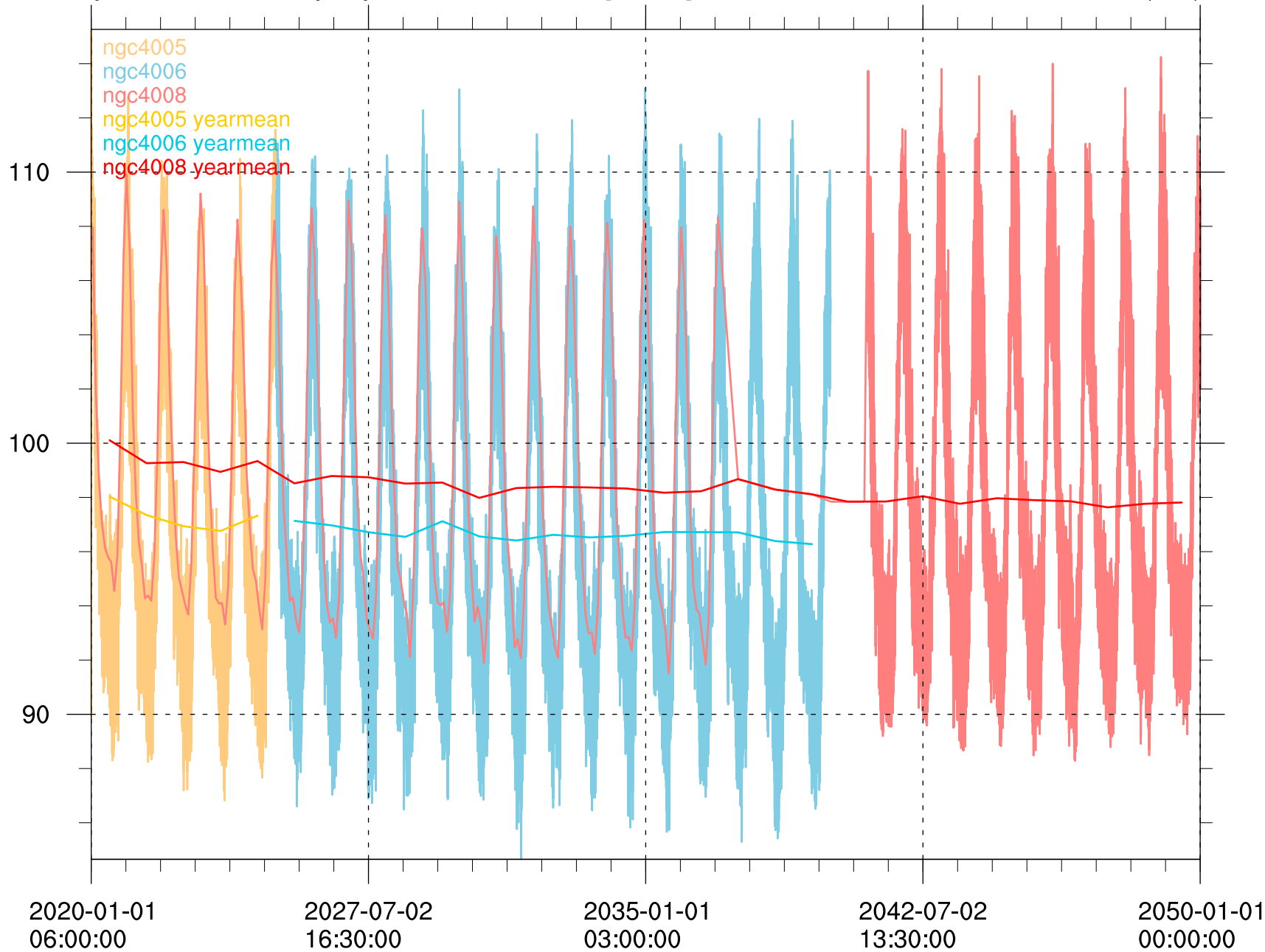
global mean toa incident shortwave radiation [W m⁻²]

(255)



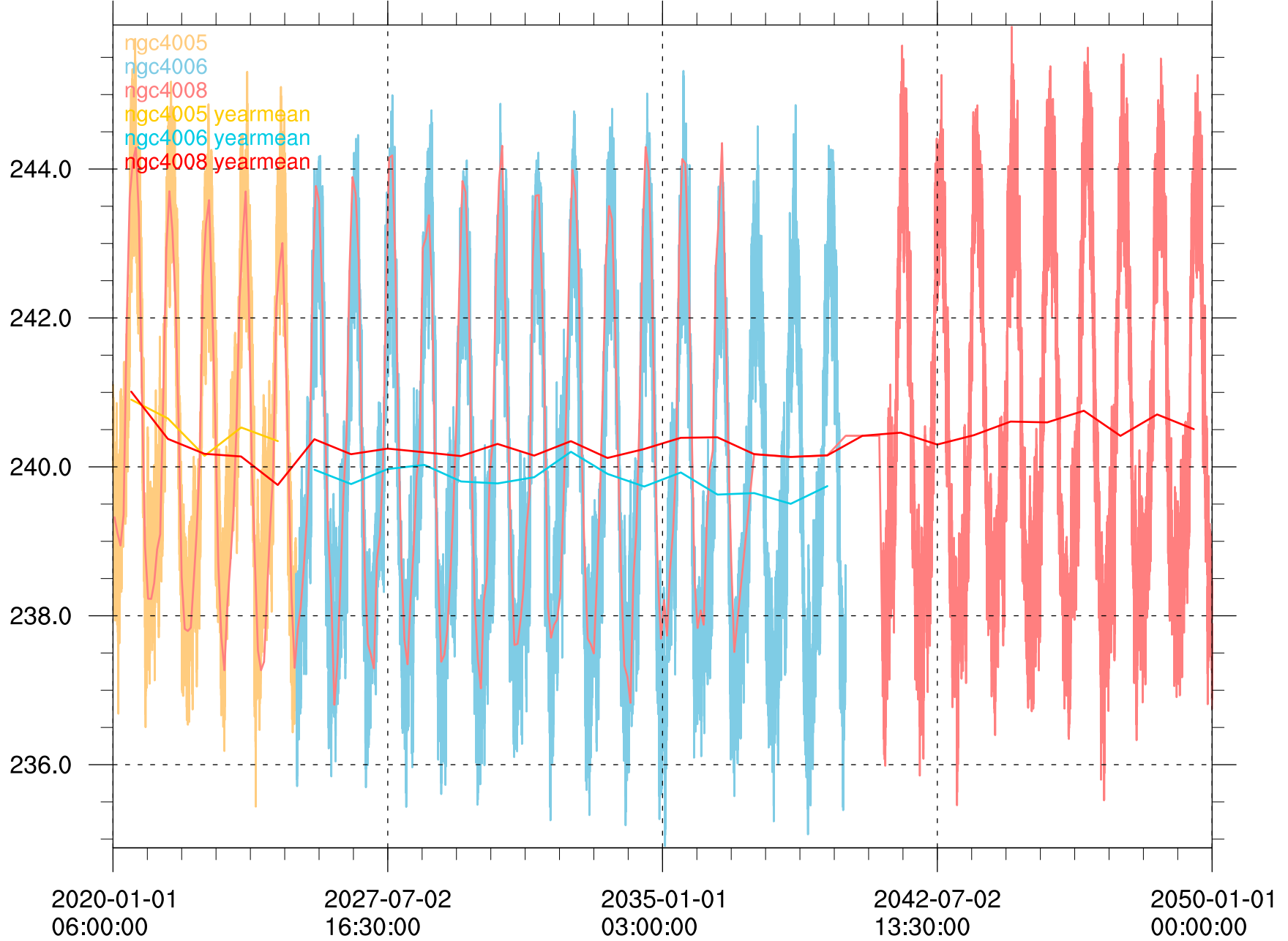
global mean toa outgoing shortwave radiation [W m-2]

(255)



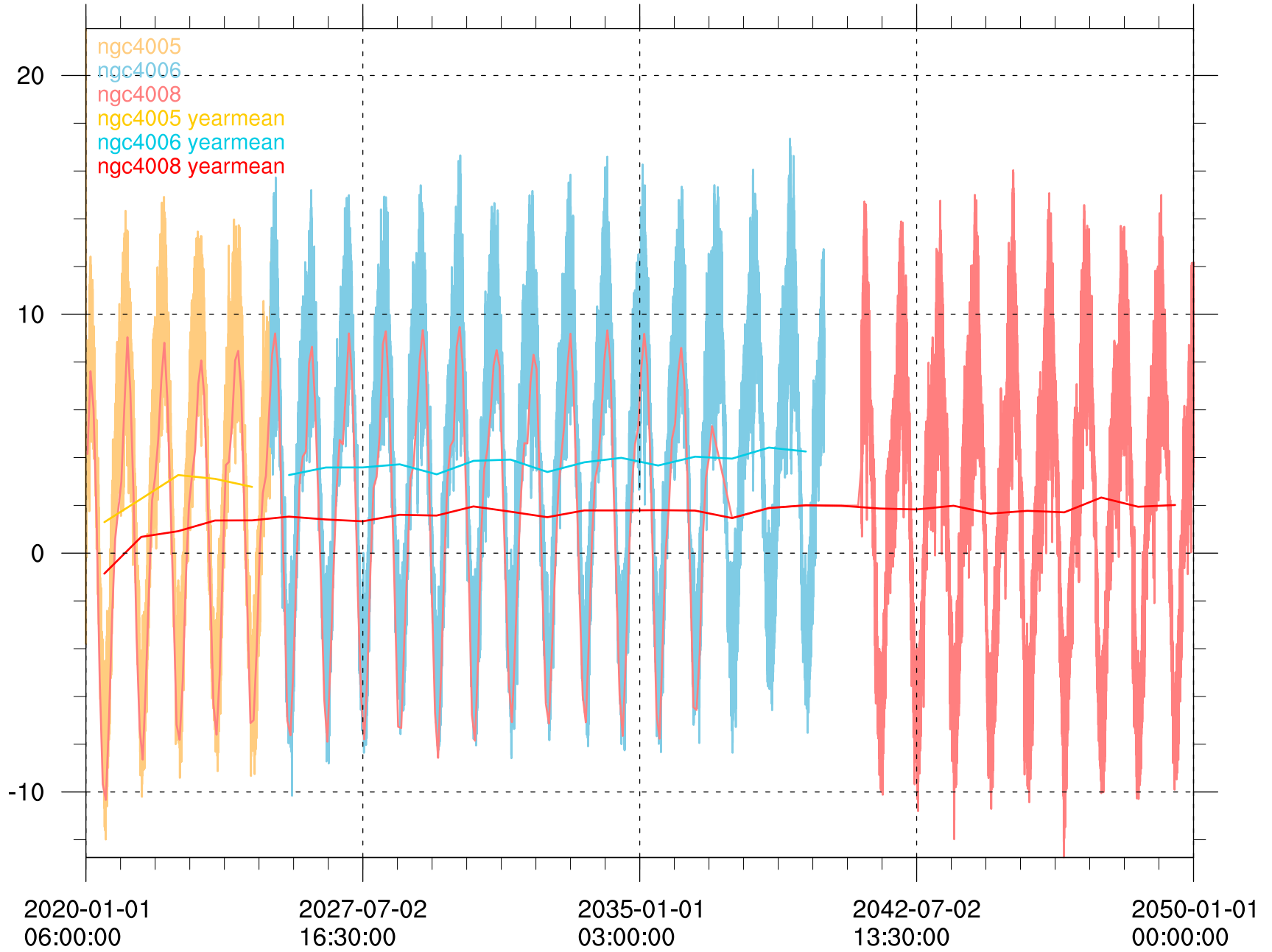
global mean toa outgoing longwave radiation [W m-2]

(255)



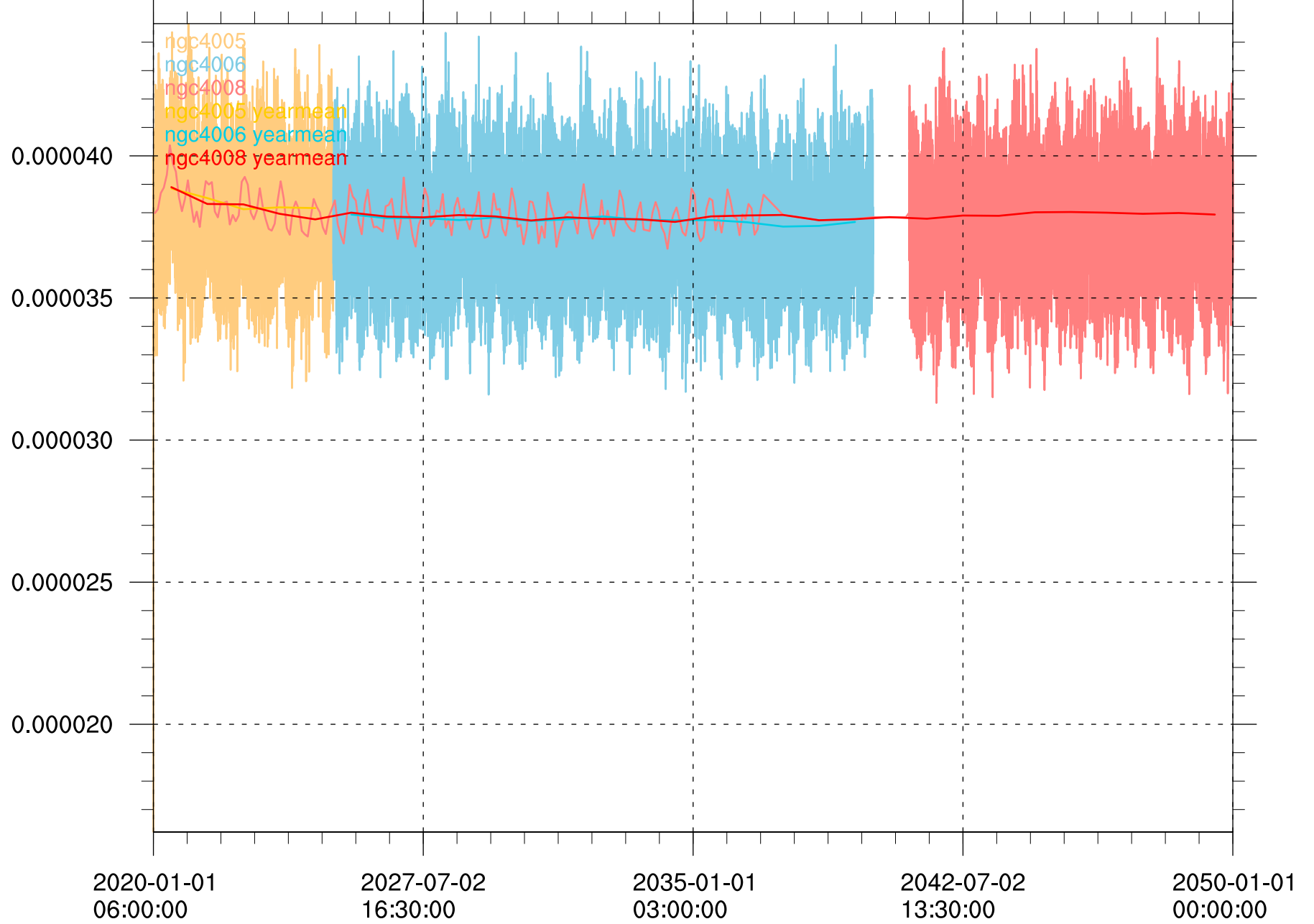
global mean toa net total radiation [W m⁻²]

(255)



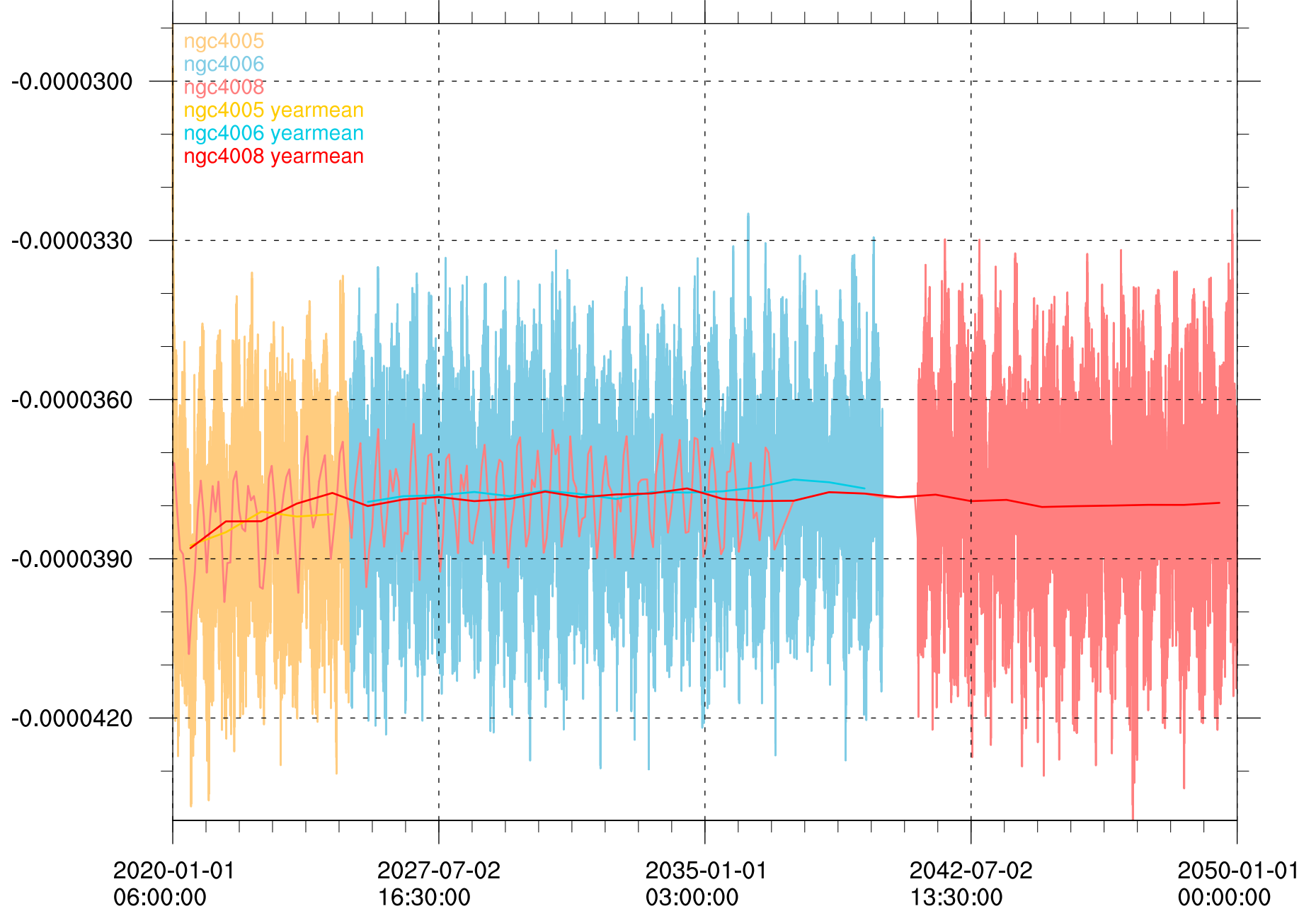
global mean precipitation flux [kg m⁻² s⁻¹]

(255)



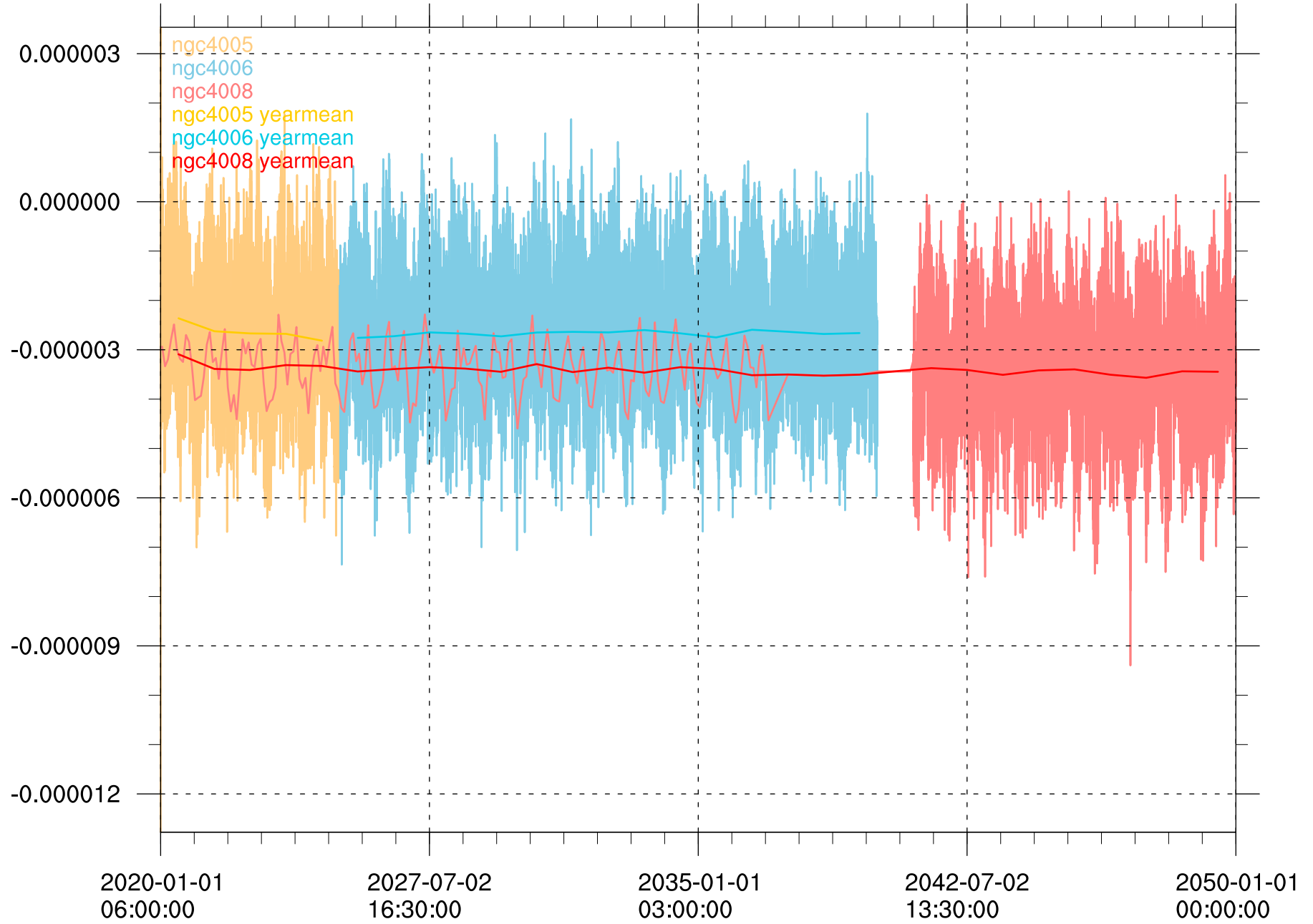
global mean evaporation flux [kg m⁻² s⁻¹]

(255)



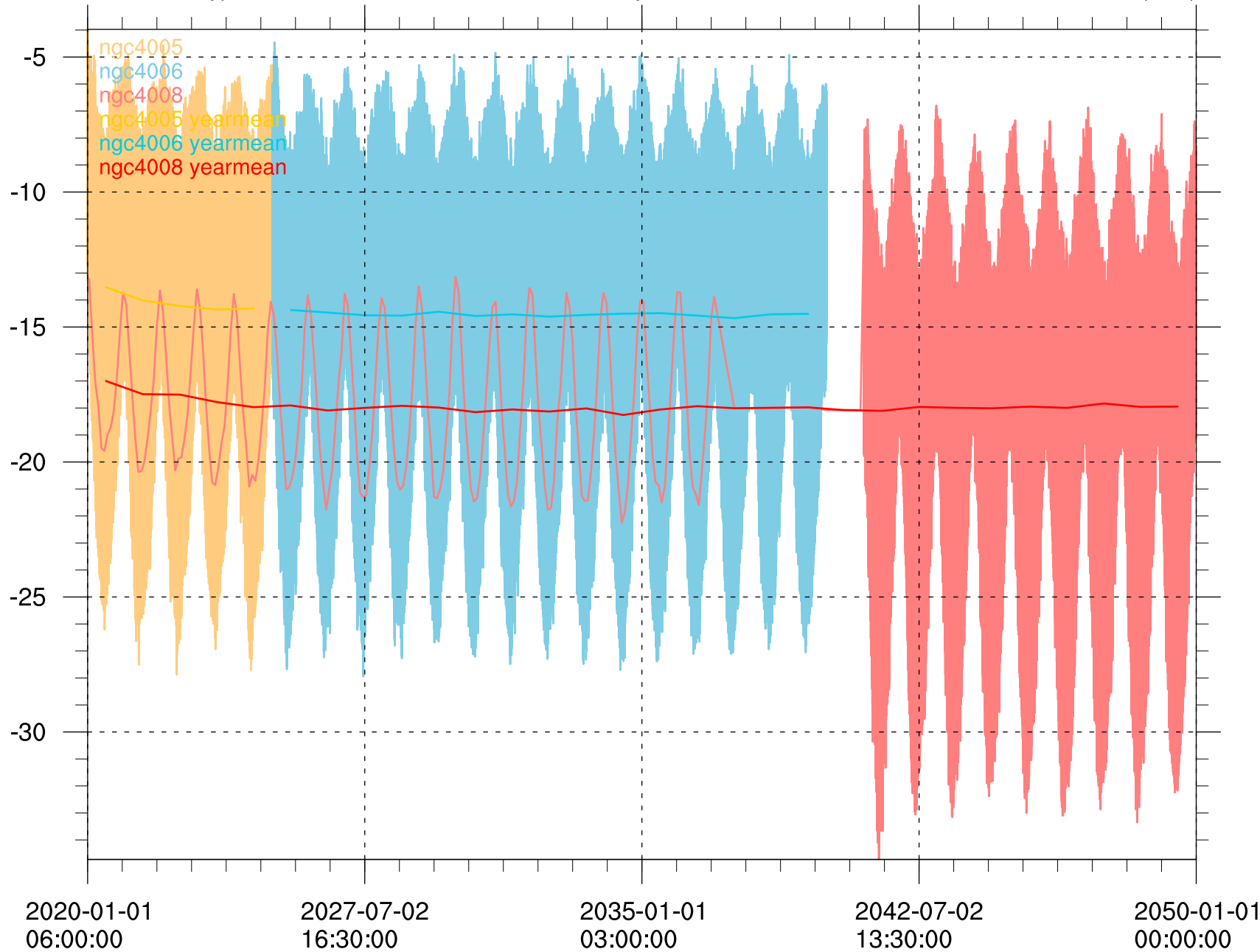
mean surface freshwater flux over ocean surface [kg m⁻² s⁻¹]

(255)



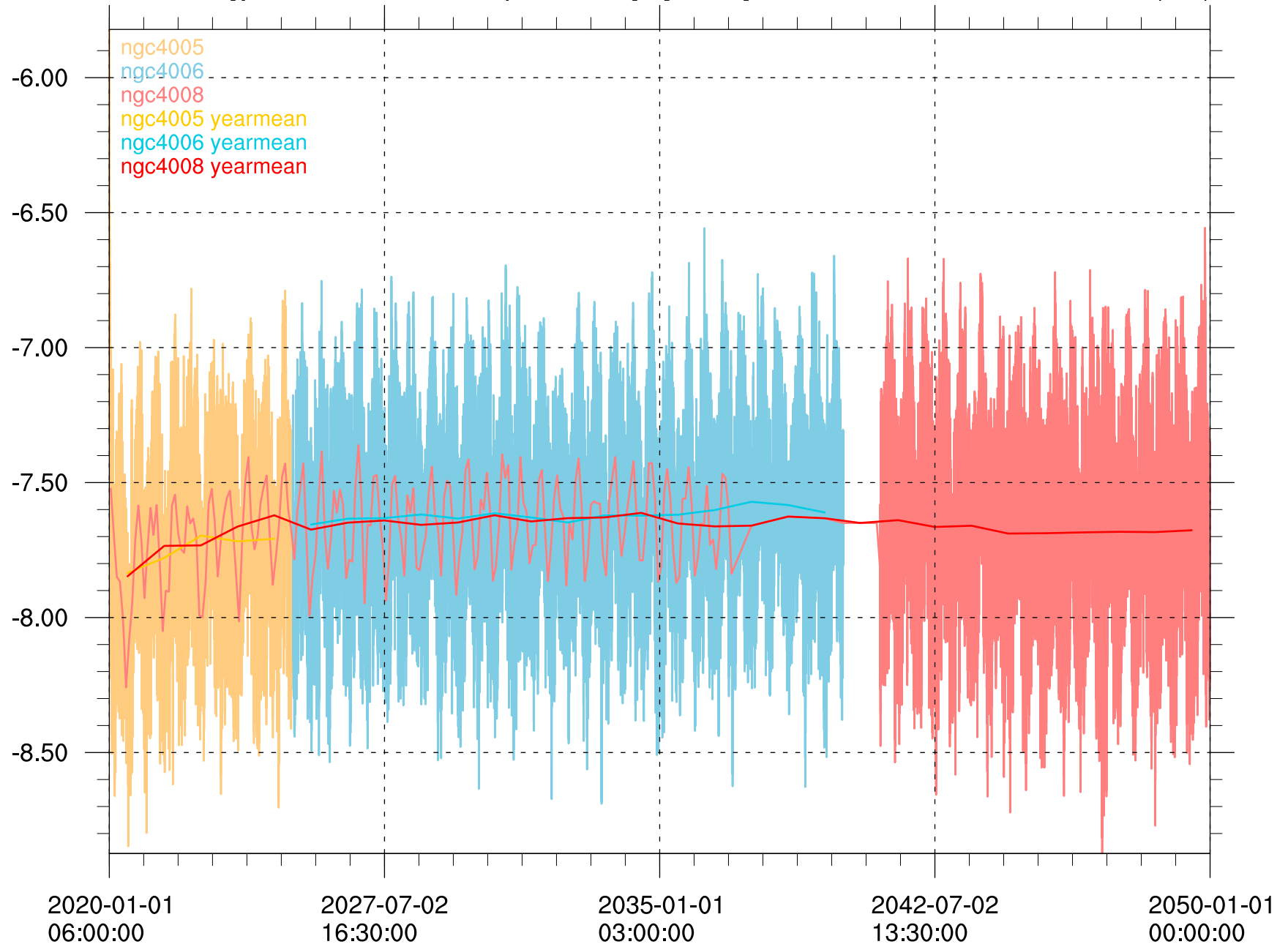
mean energy flux at surface from thermal exchange [W m⁻²]

(255)



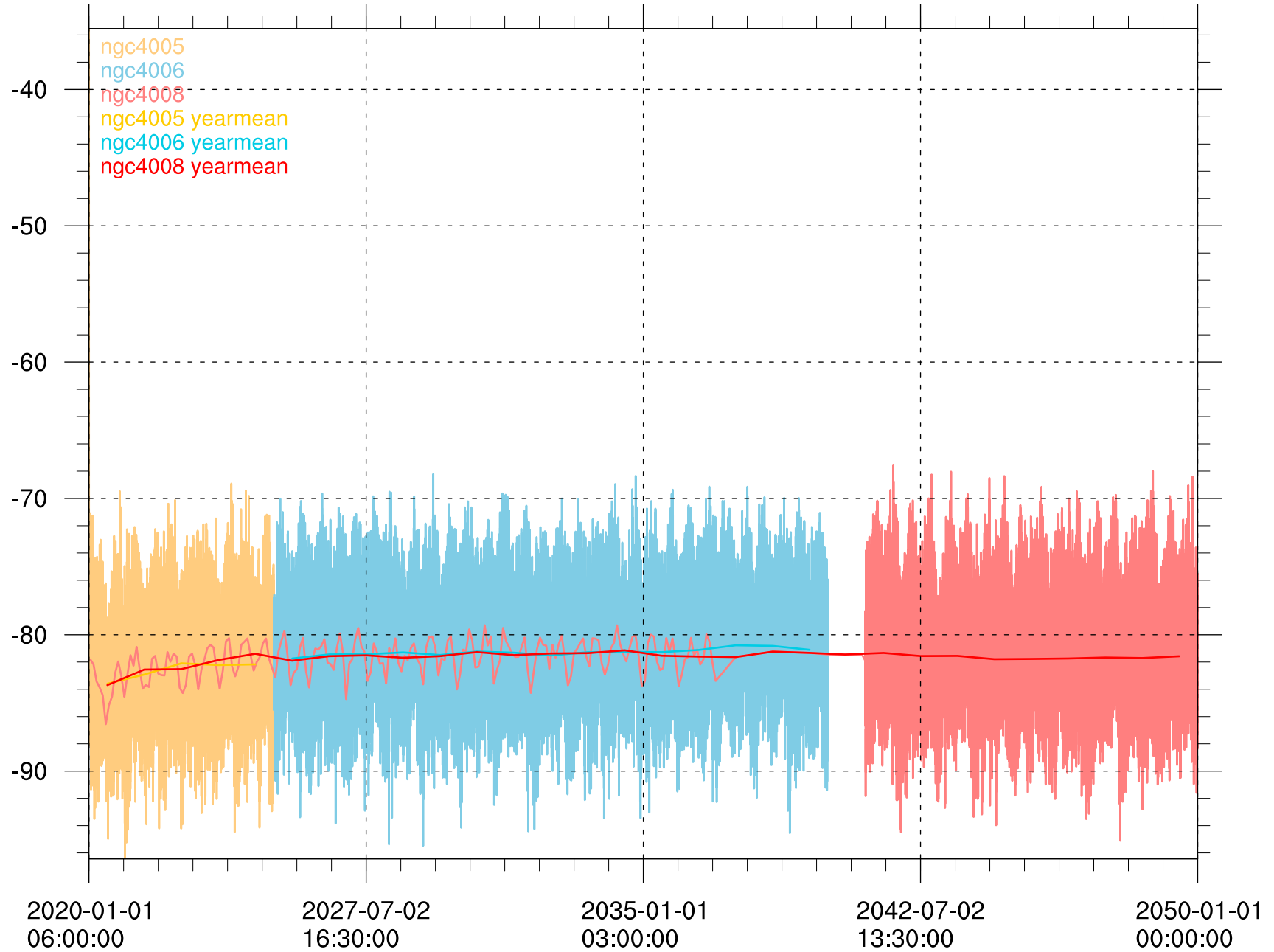
mean energy flux at surface from vapor exchange [W m⁻²]

(255)



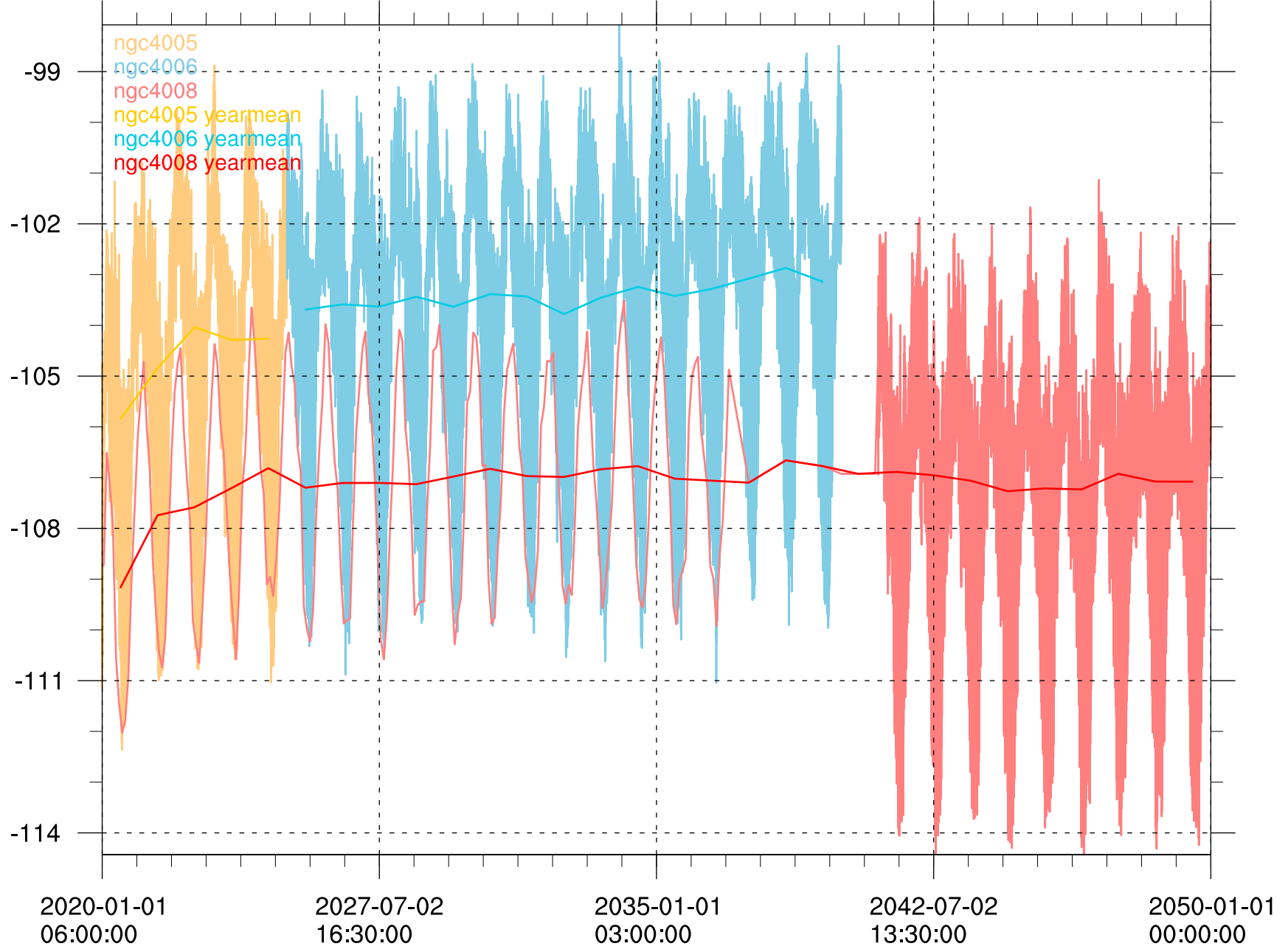
mean energy flux at surface from condensate [W m⁻²]

(255)



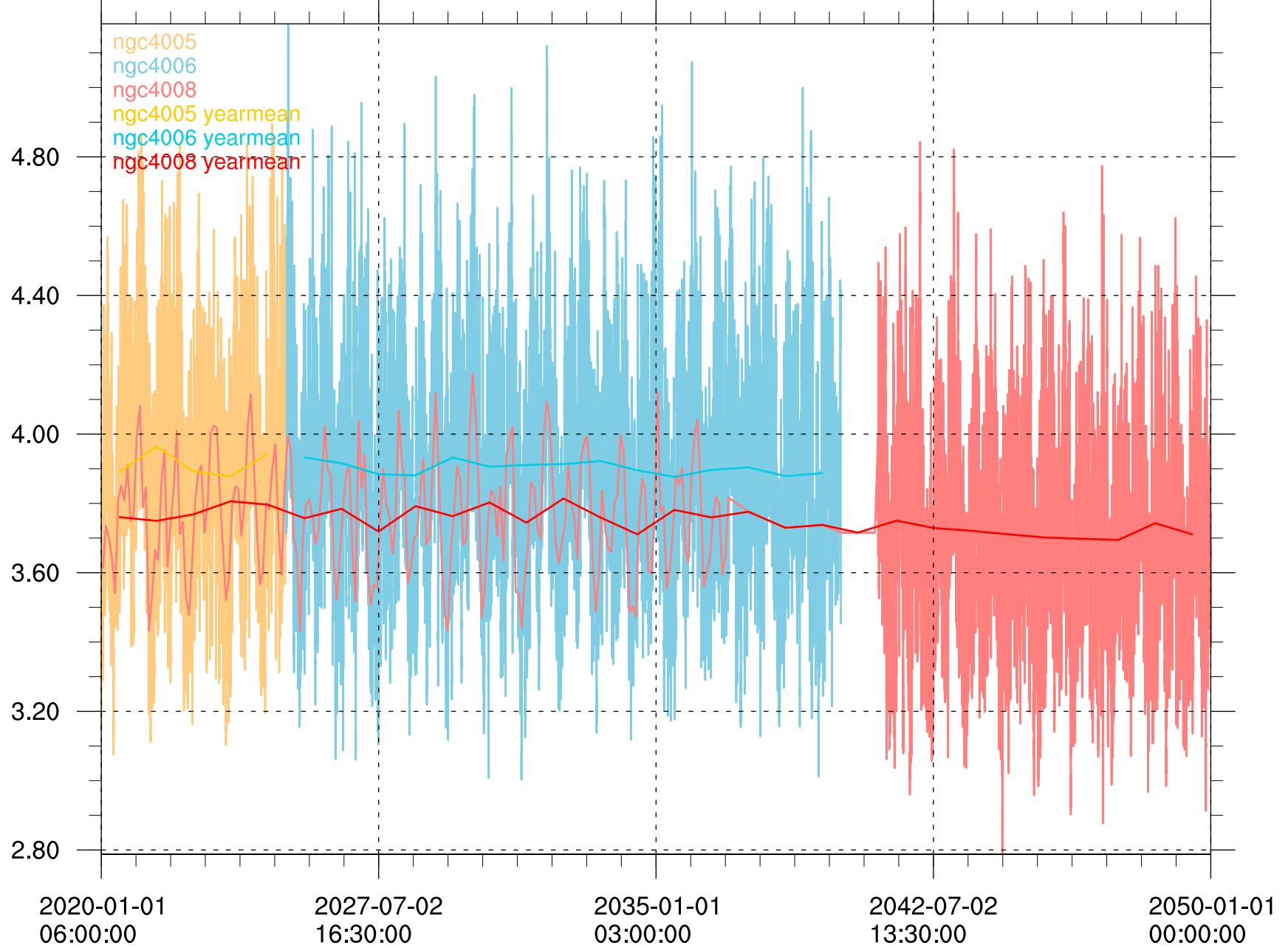
global mean net radiative flux into atmosphere [W m⁻²]

(255)



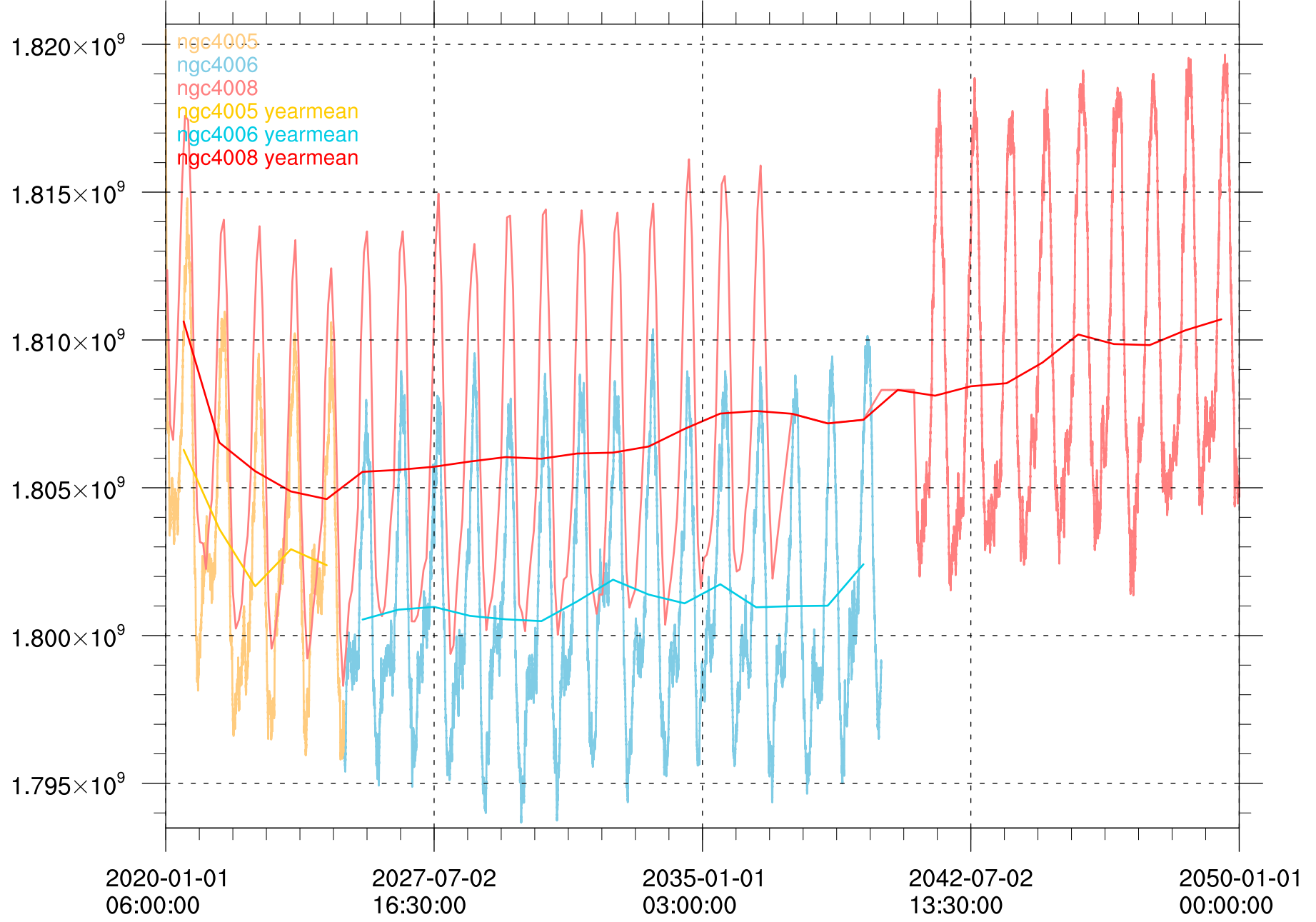
mean vert. integr. dissip. kin. energy [W m⁻²]

(255)



mean vertically integrated moist internal energy after dynamics [J m-2]

(255)



mean vertically integrated moist internal energy change by physics [J m⁻²]

(255)

