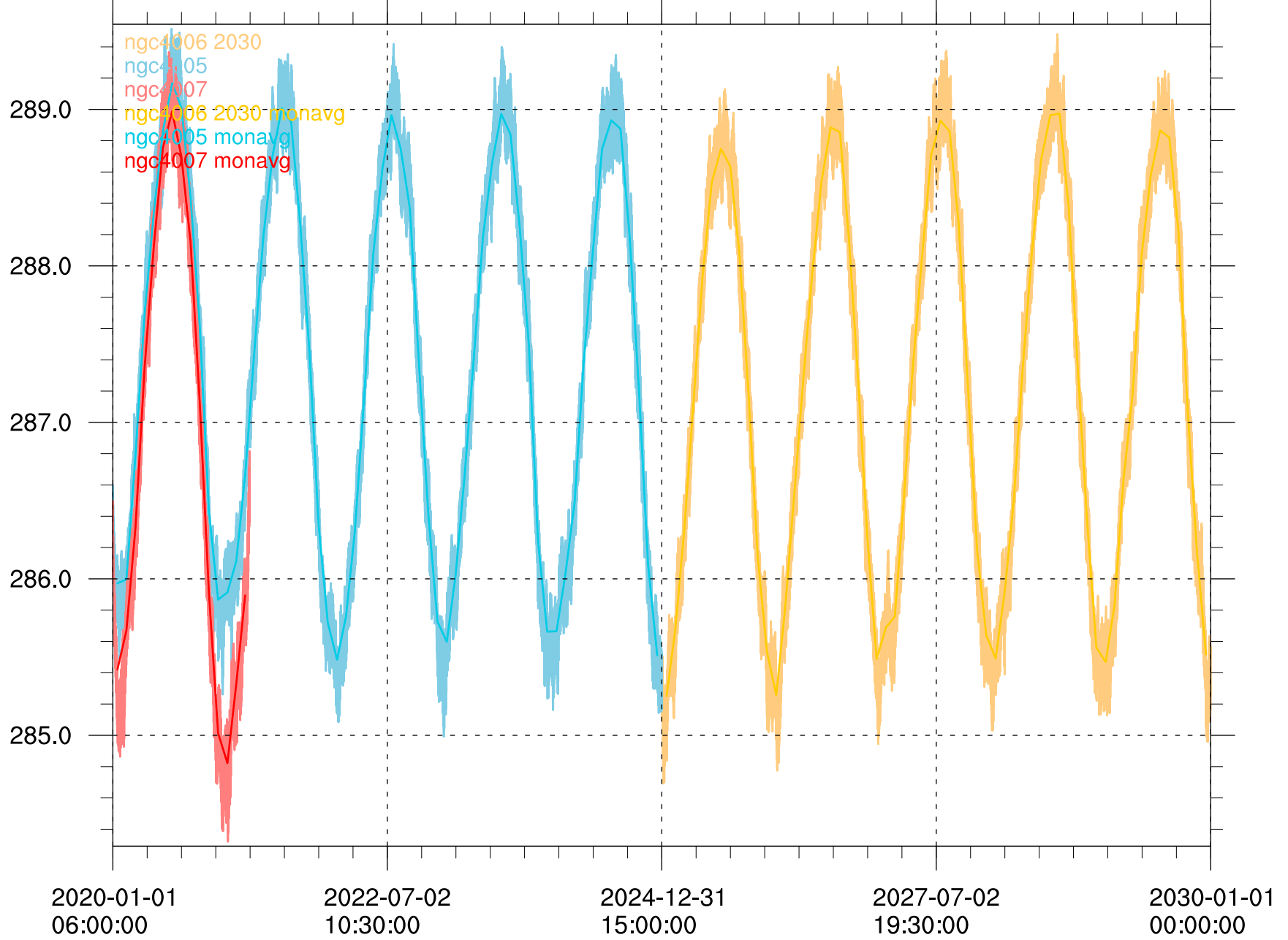


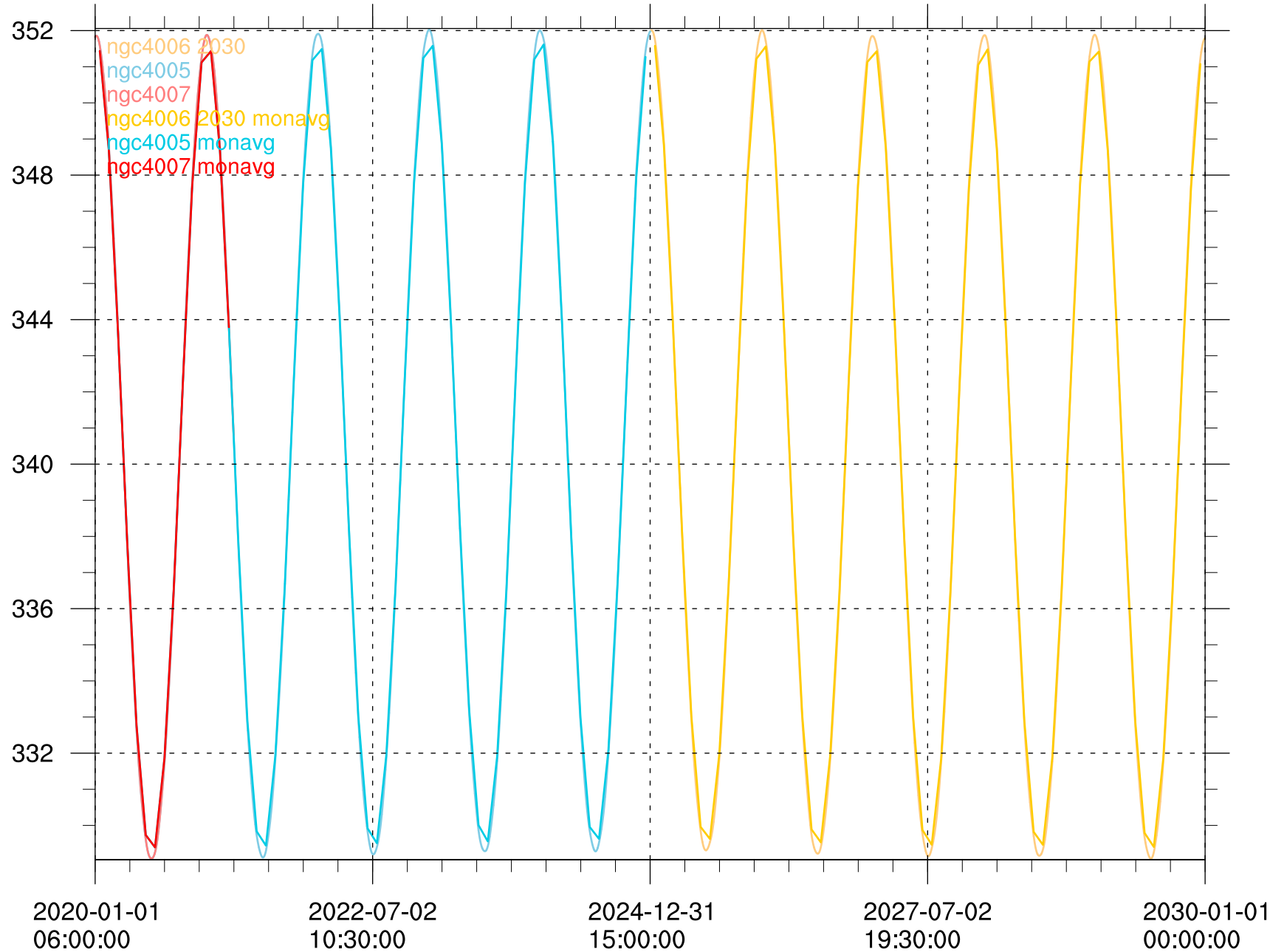
global mean temperature at 2m [K]

(255)



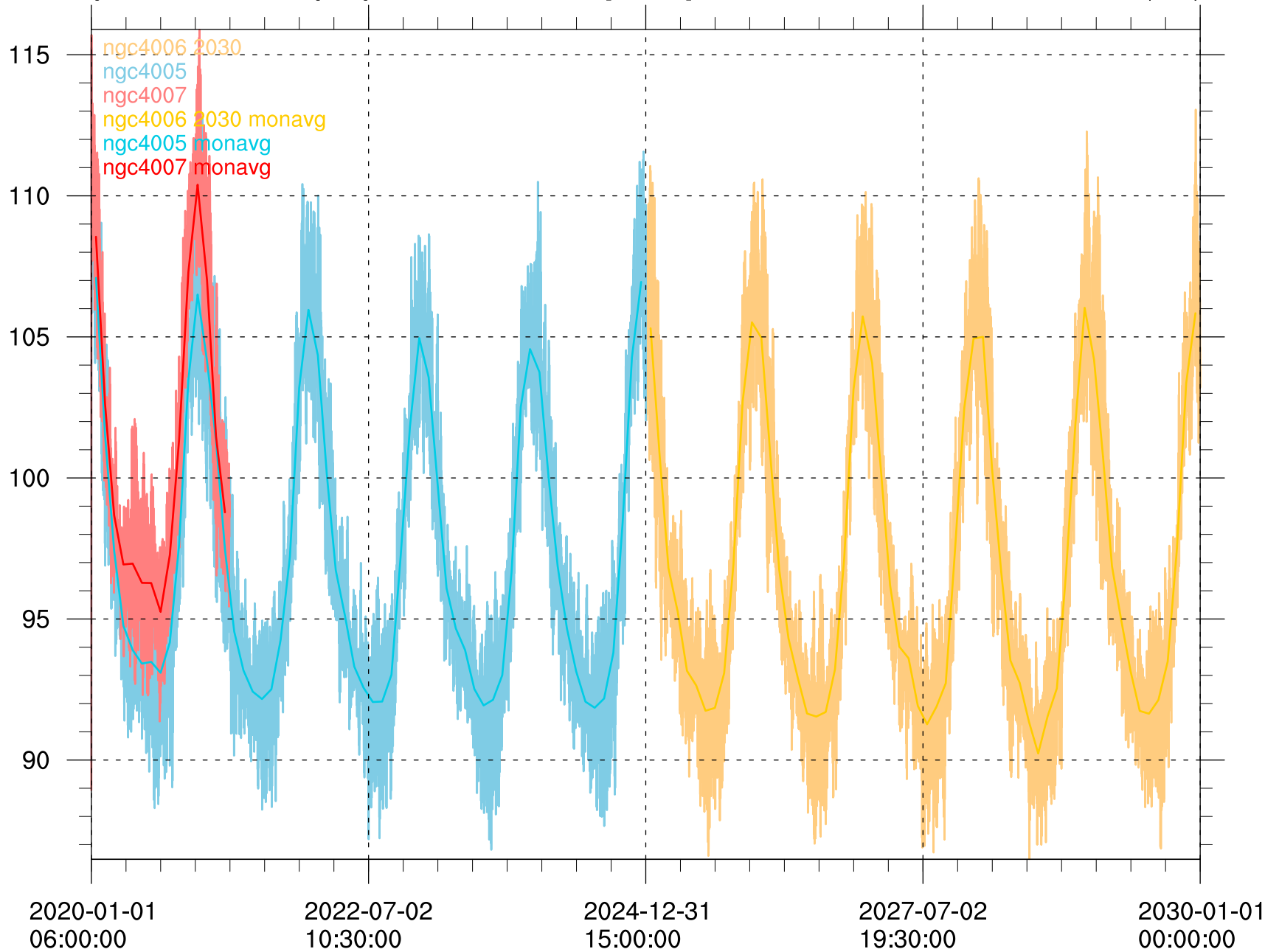
global mean toa incident shortwave radiation [W m<sup>-2</sup>]

(255)



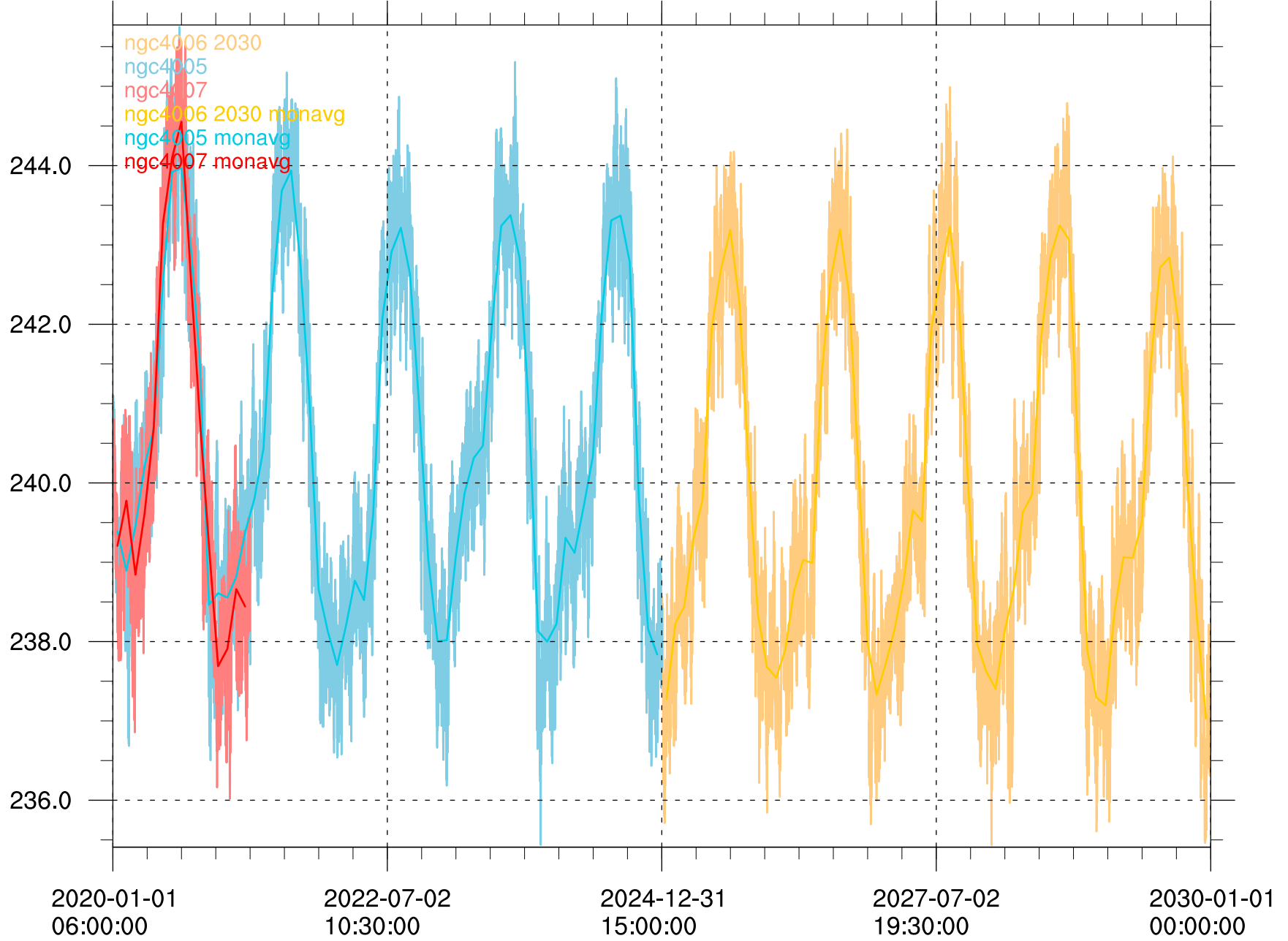
global mean toa outgoing shortwave radiation [W m-2]

(255)



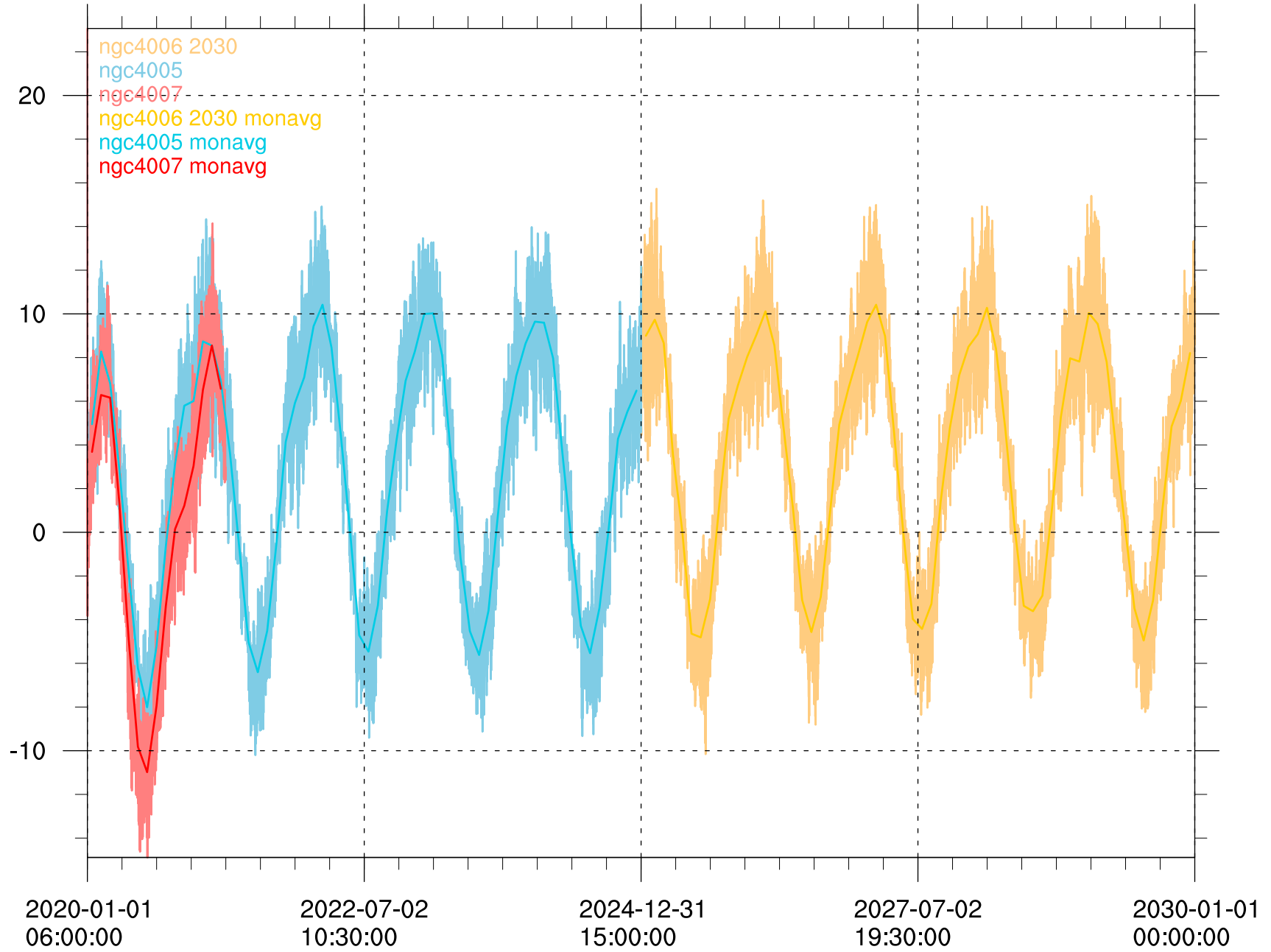
global mean toa outgoing longwave radiation [W m-2]

(255)



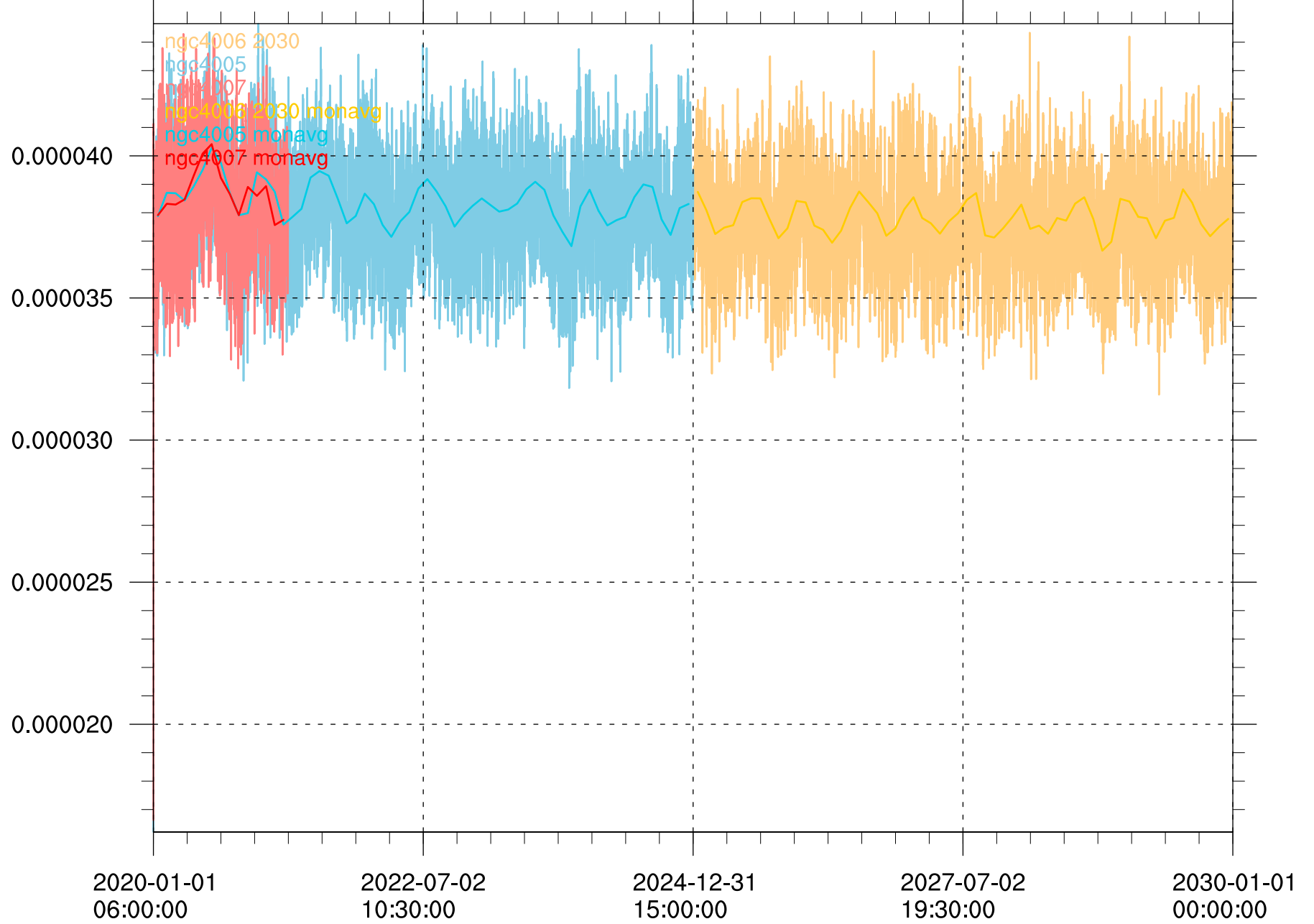
global mean toa net total radiation [W m<sup>-2</sup>]

(255)



global mean precipitation flux [kg m<sup>-2</sup> s<sup>-1</sup>]

(255)



global mean evaporation flux [kg m<sup>-2</sup> s<sup>-1</sup>]

(255)

ngc4006 2030  
ngc4005  
ngc4007  
ngc4006 2030 monavg  
ngc4005 monavg  
ngc4007 monavg

-0.0000300

-0.0000330

-0.0000360

-0.0000390

-0.0000420

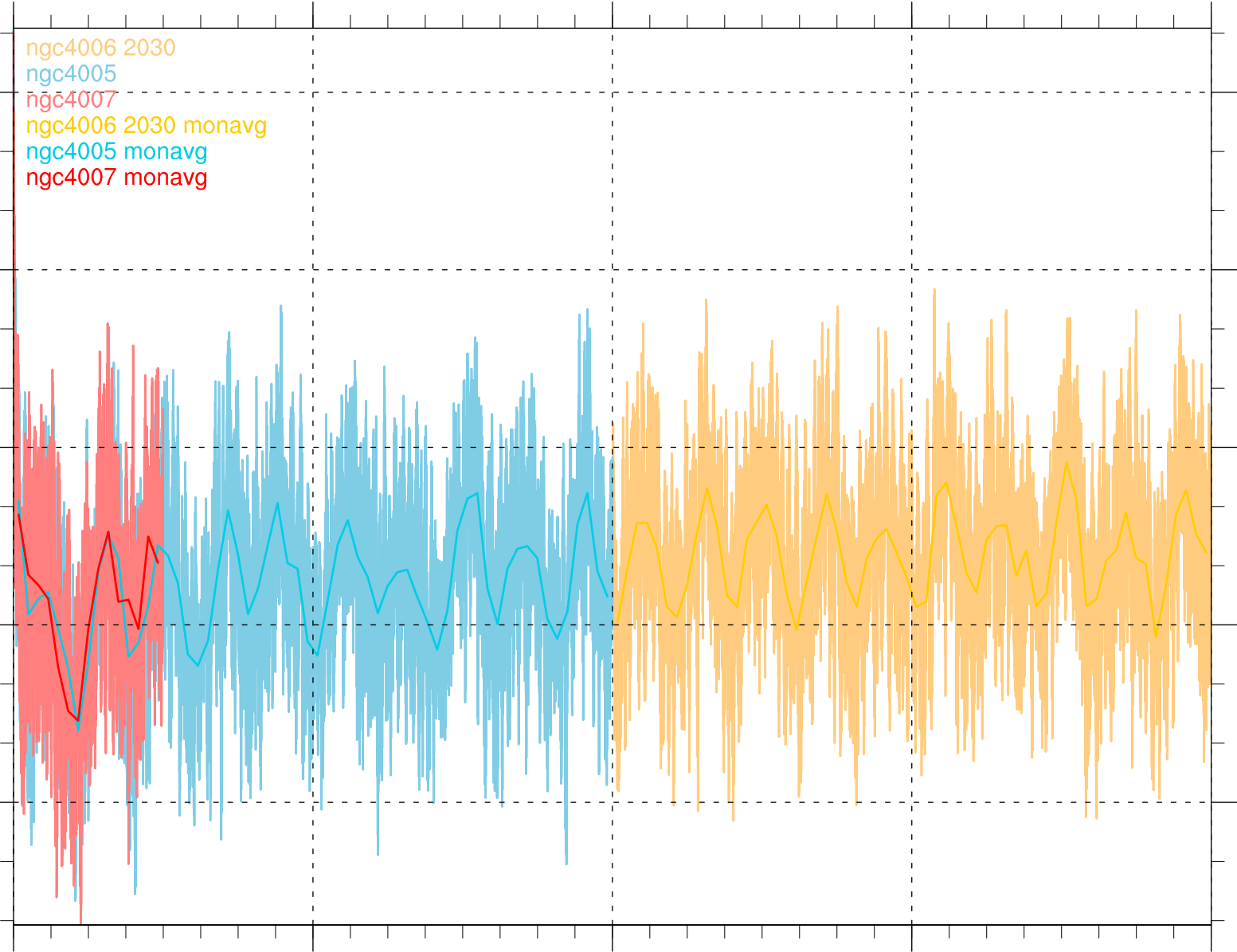
2020-01-01  
06:00:00

2022-07-02  
10:30:00

2024-12-31  
15:00:00

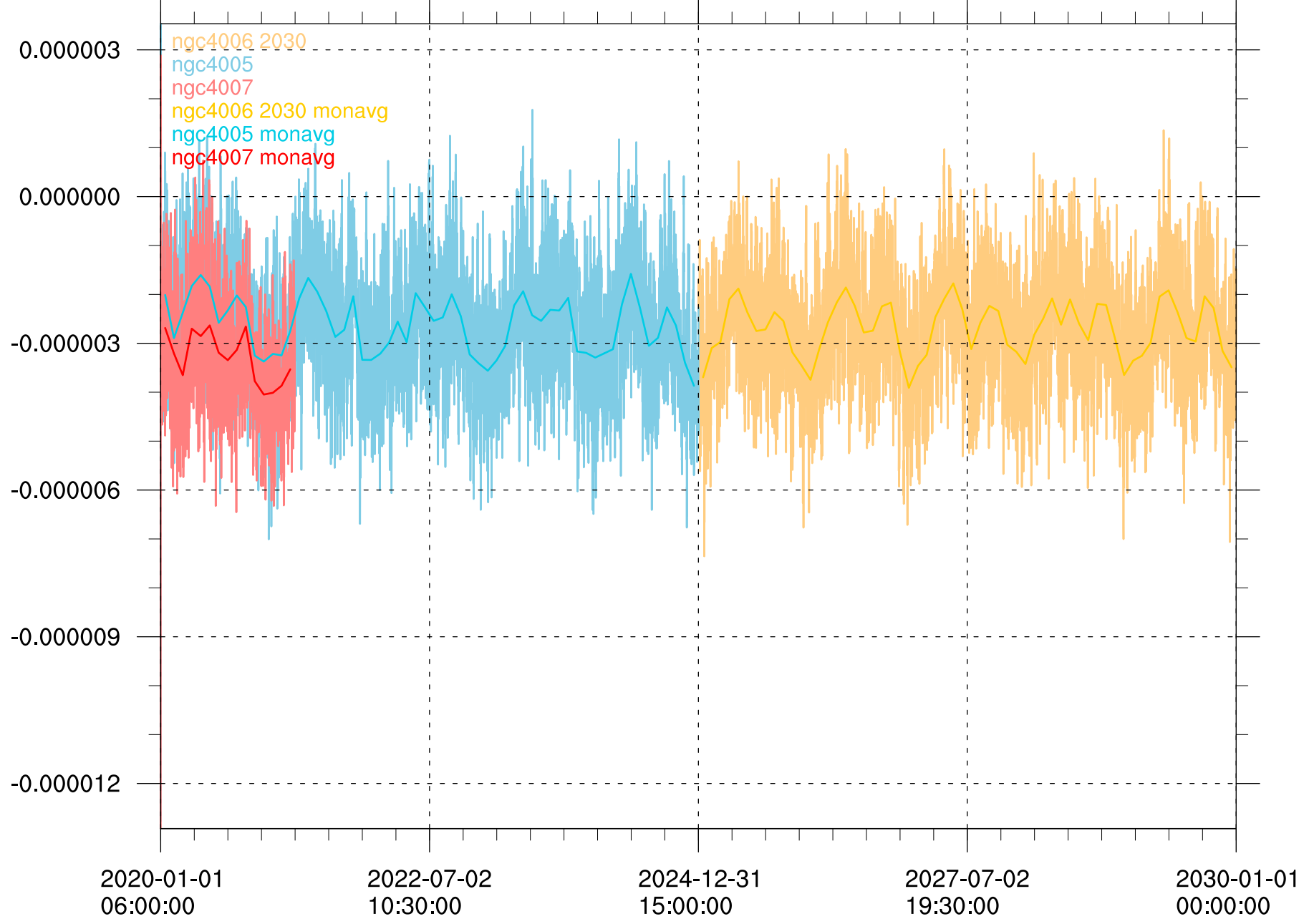
2027-07-02  
19:30:00

2030-01-01  
00:00:00



mean surface freshwater flux over ocean surface [kg m<sup>-2</sup> s<sup>-1</sup>]

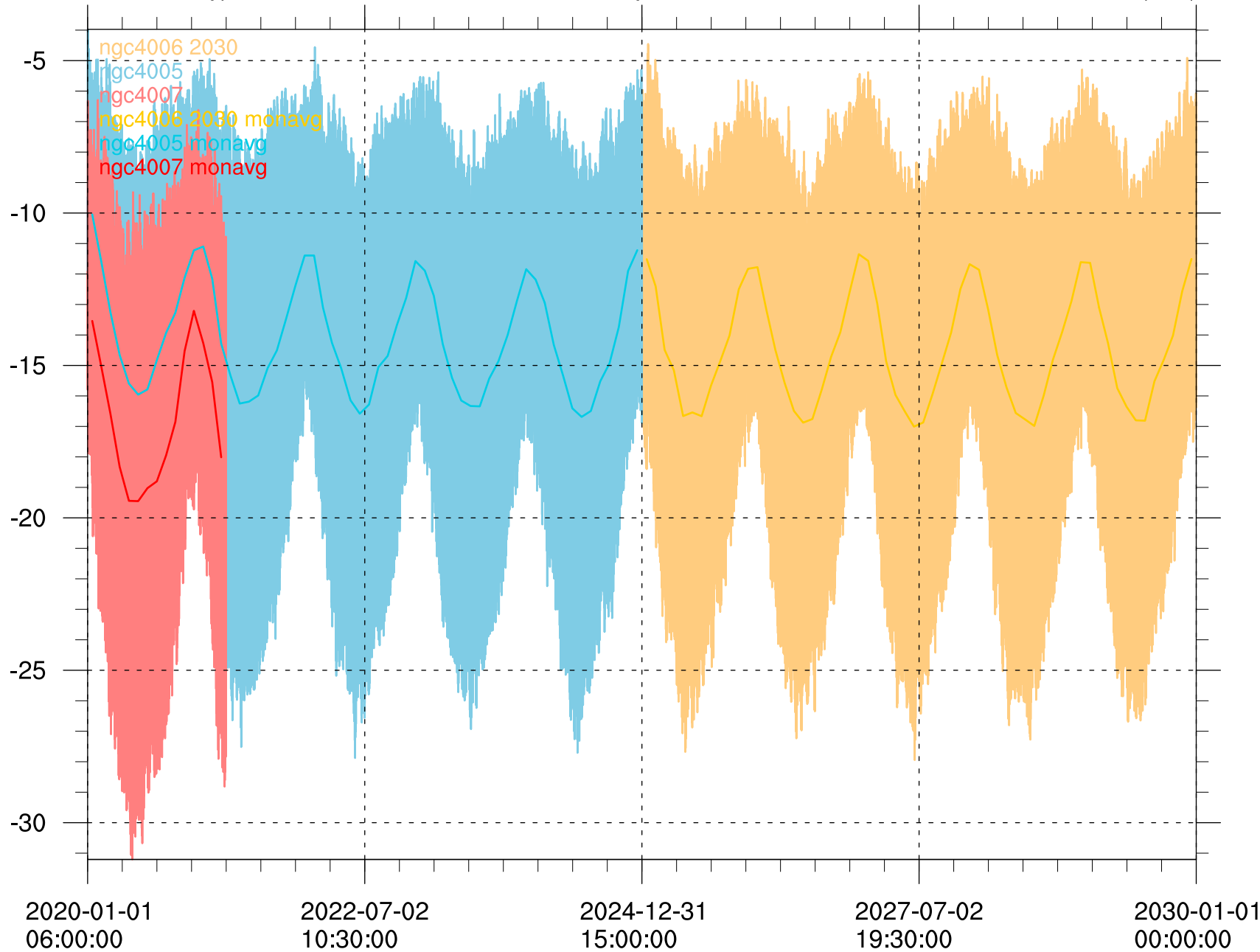
(255)





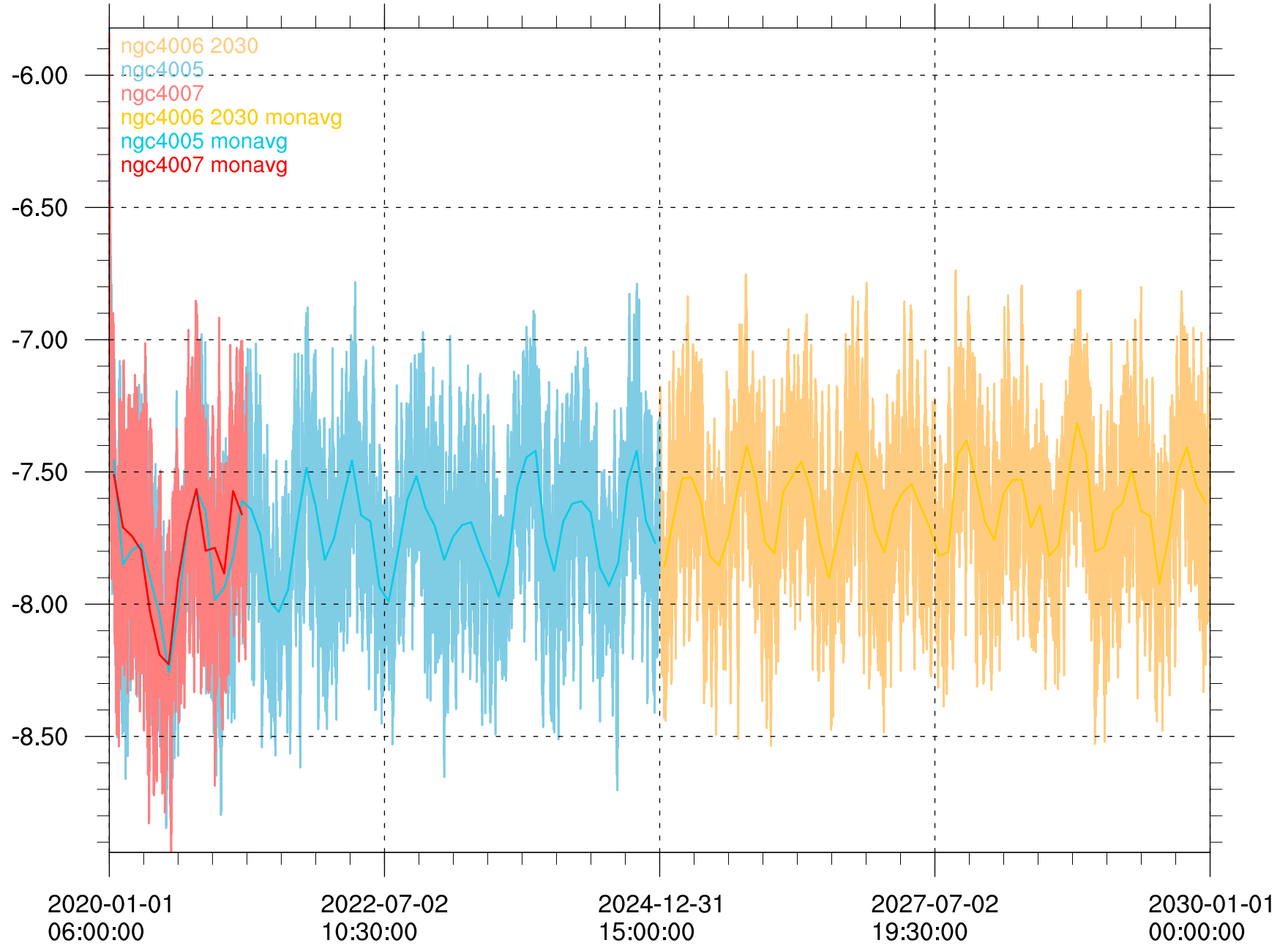
mean energy flux at surface from thermal exchange [W m<sup>-2</sup>]

(255)



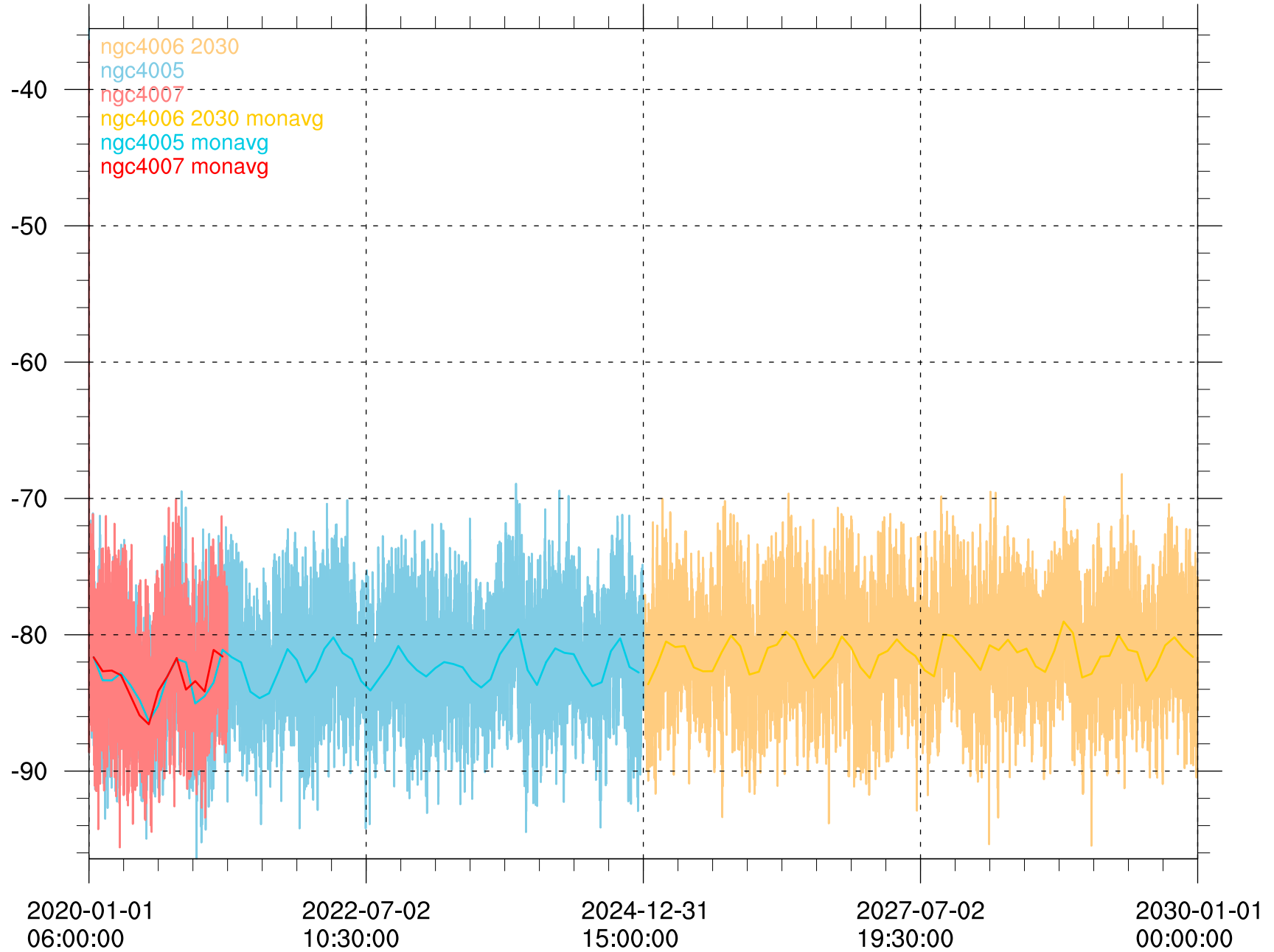
mean energy flux at surface from vapor exchange [W m<sup>-2</sup>]

(255)



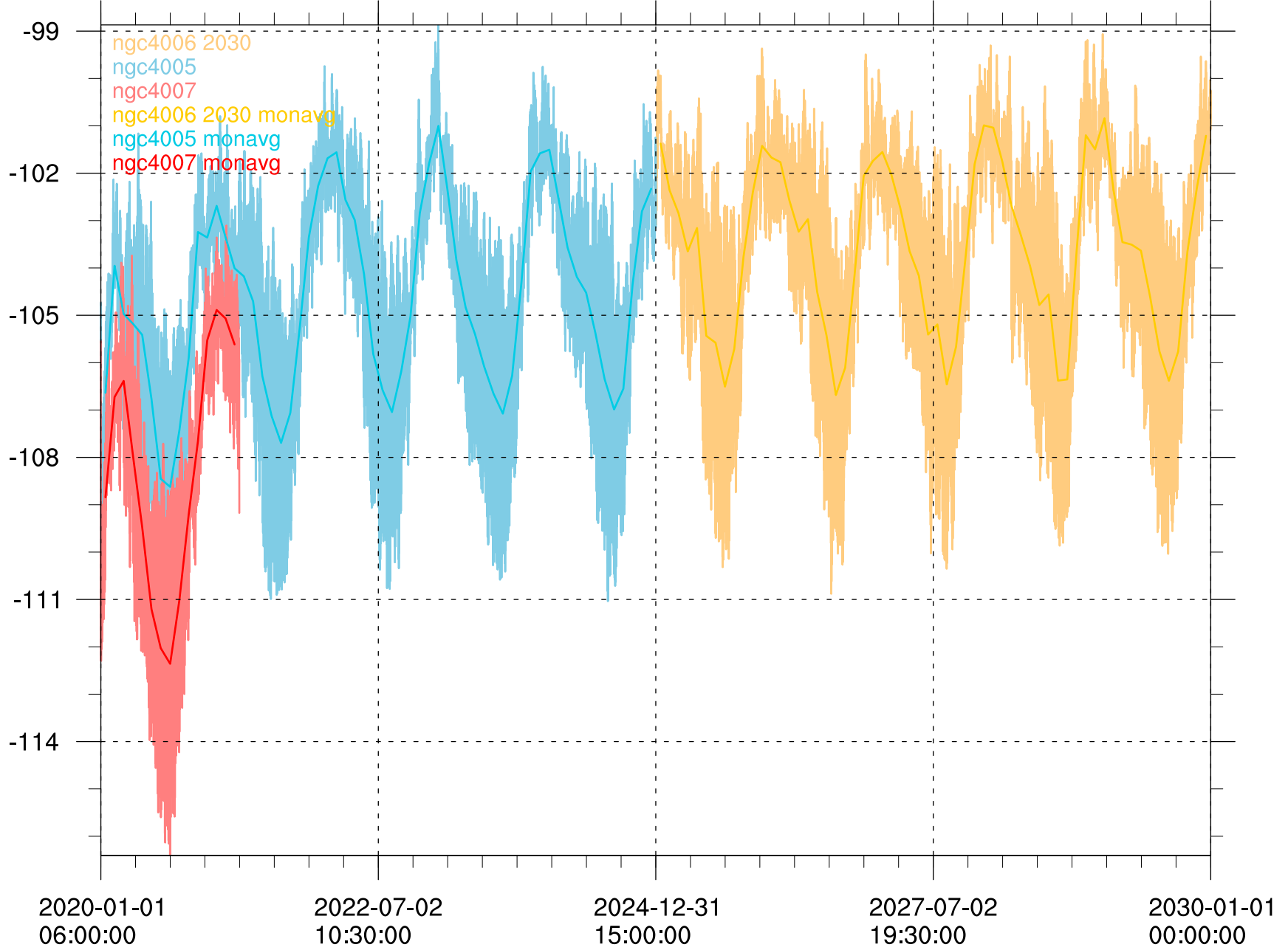
mean energy flux at surface from condensate [W m<sup>-2</sup>]

(255)



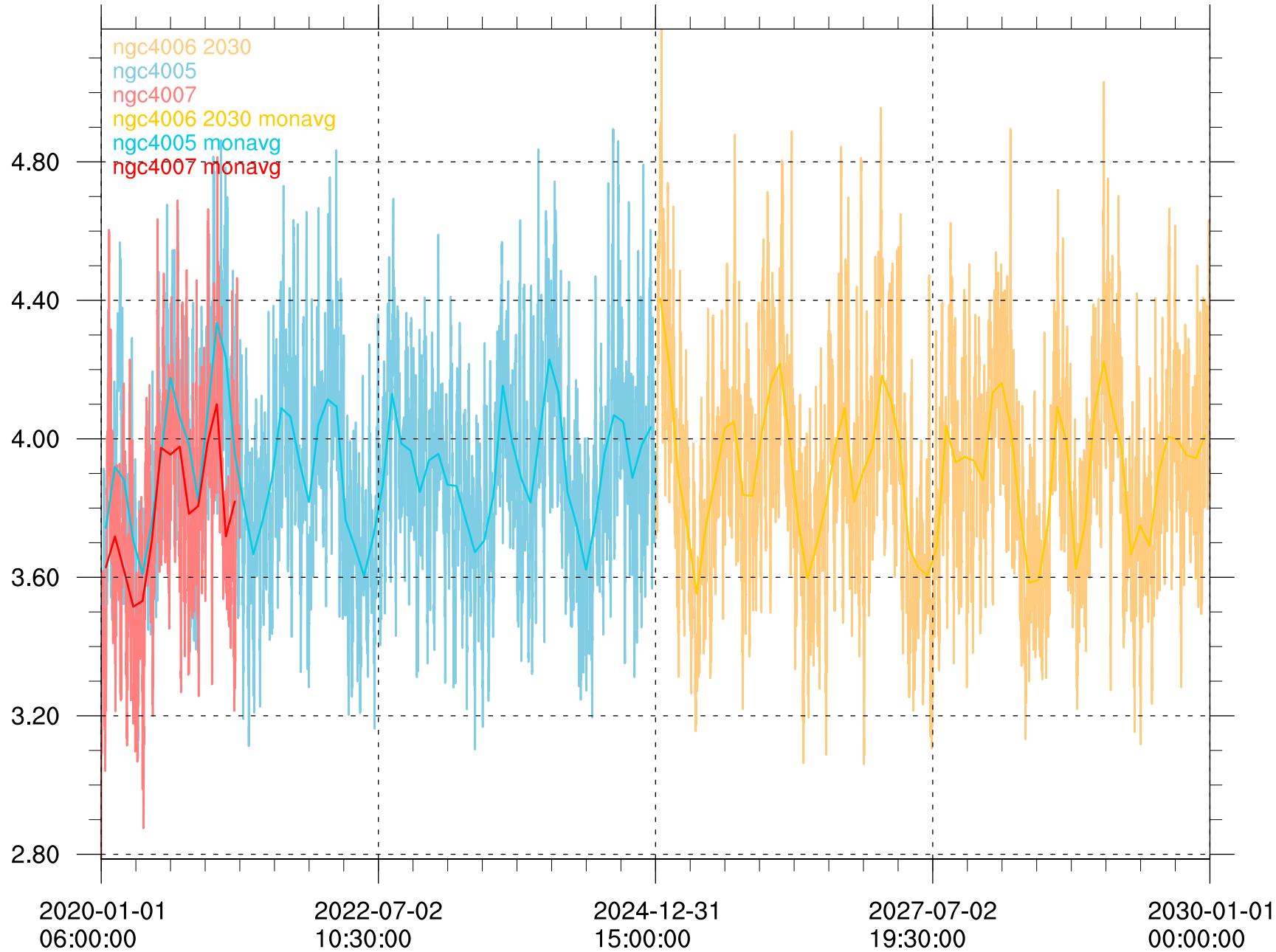
global mean net radiative flux into atmosphere [W m<sup>-2</sup>]

(255)



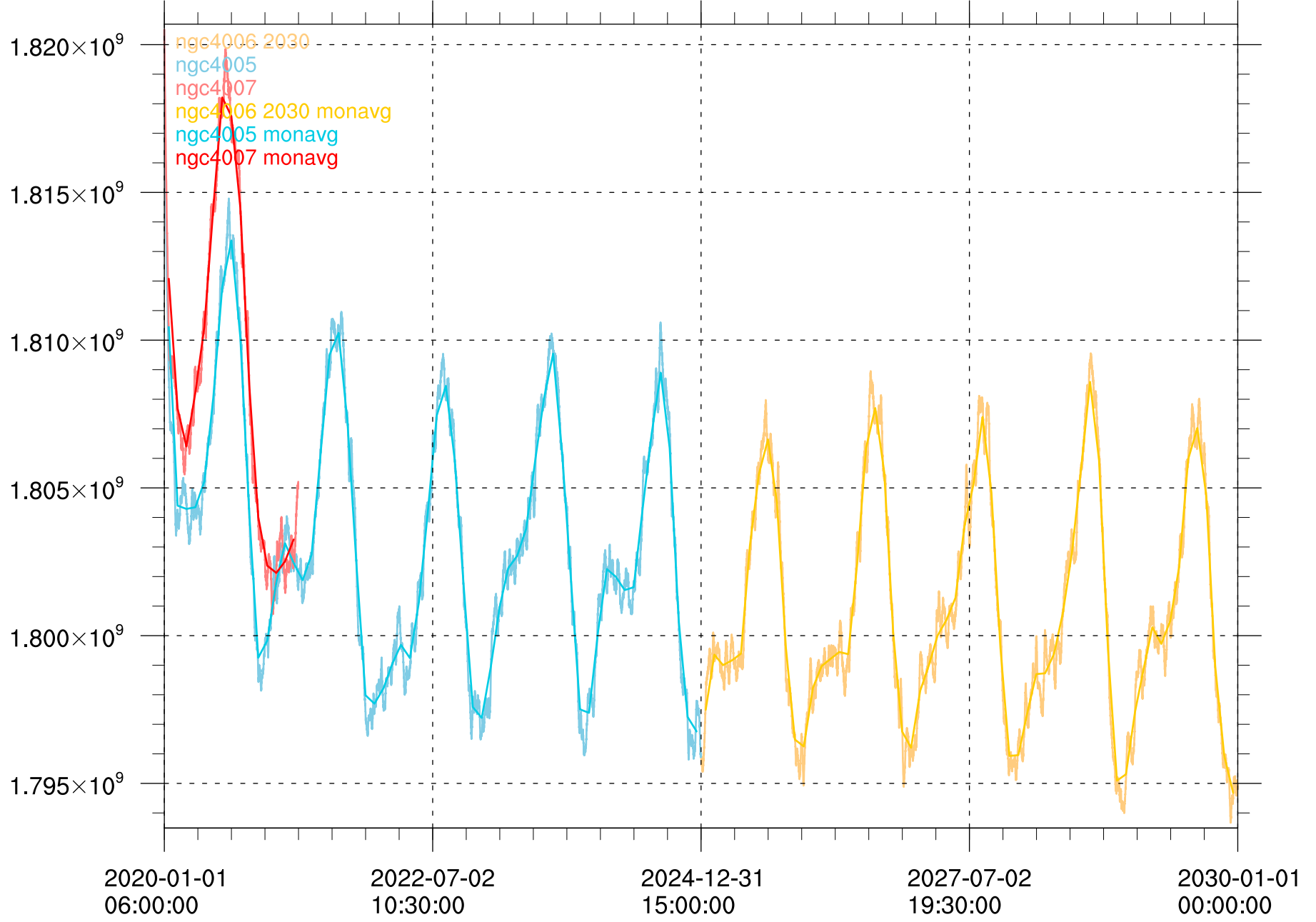
mean vert. integr. dissip. kin. energy [W m<sup>-2</sup>]

(255)



mean vertically integrated moist internal energy after dynamics [J m-2]

(255)



mean vertically integrated moist internal energy change by physics [J m<sup>-2</sup>]

(255)

