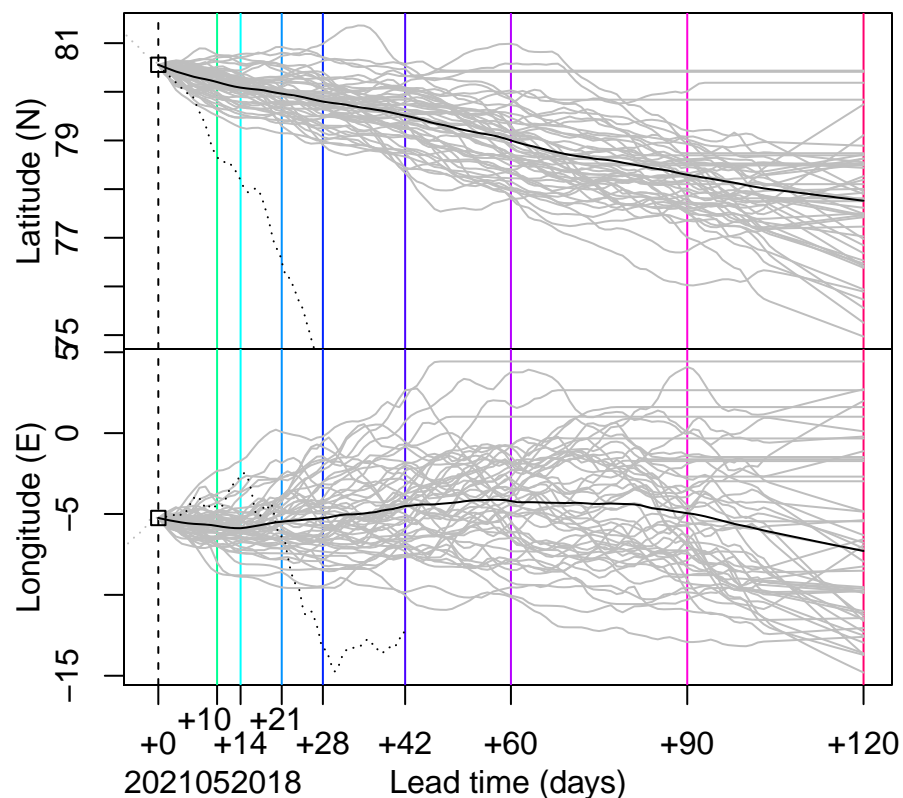
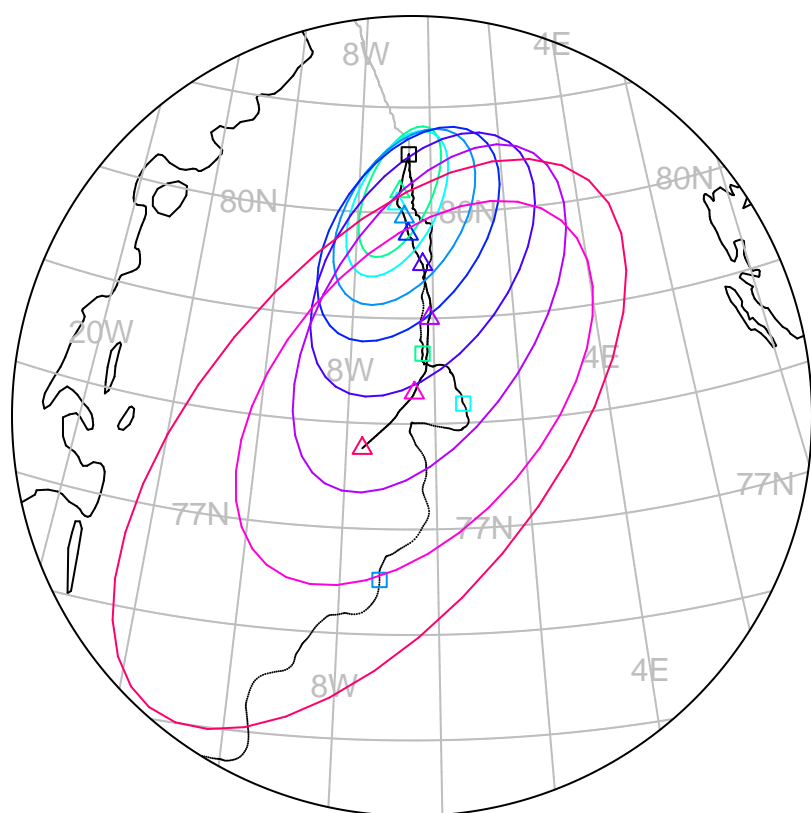


forecast trajectory with 90%-confidence regions  
 observed trajectory (colour=lead-time, see right)



## Graphical Evaluation of SIDFEx consensus forecast

Initial time (YYYYMMDDHH): 2021052018

Consensus forecast version: 20200221v1

Generated at: 2021-147.017

Forecasts included (age relative to initial time / remaining lead time range, both in days):

ecmwf001\_SEAS5 (19.75 / 104.25)

**WARNING: This is an experimental forecast product with no warranty**

More information: <https://sidfex.polarprediction.net>

Contact: [helge.goessling@awi.de](mailto:helge.goessling@awi.de)