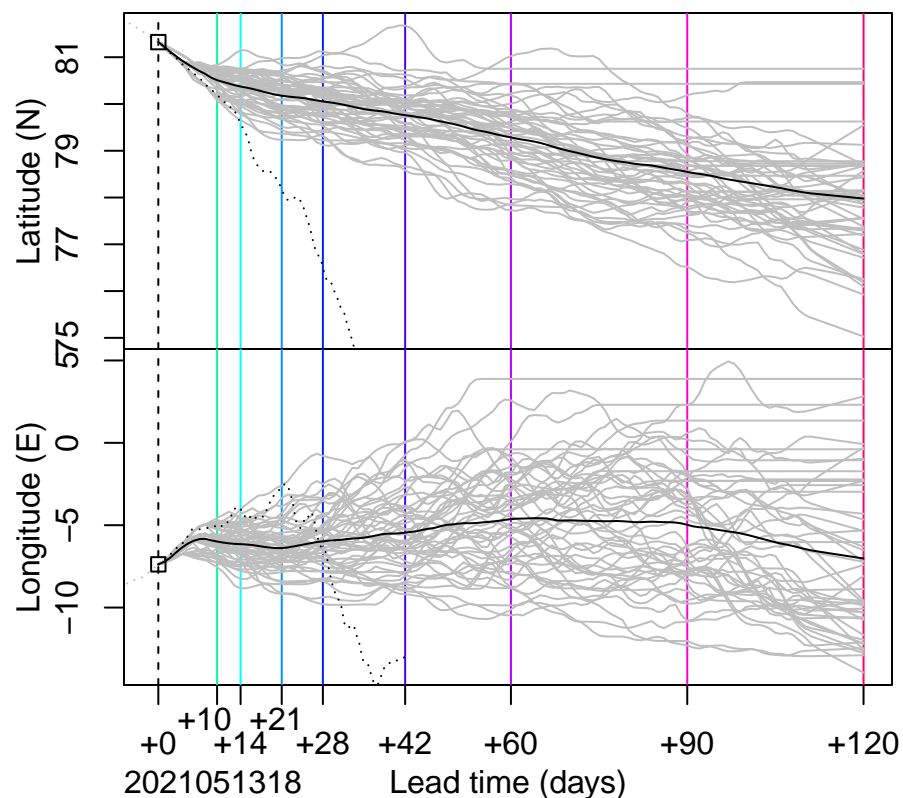
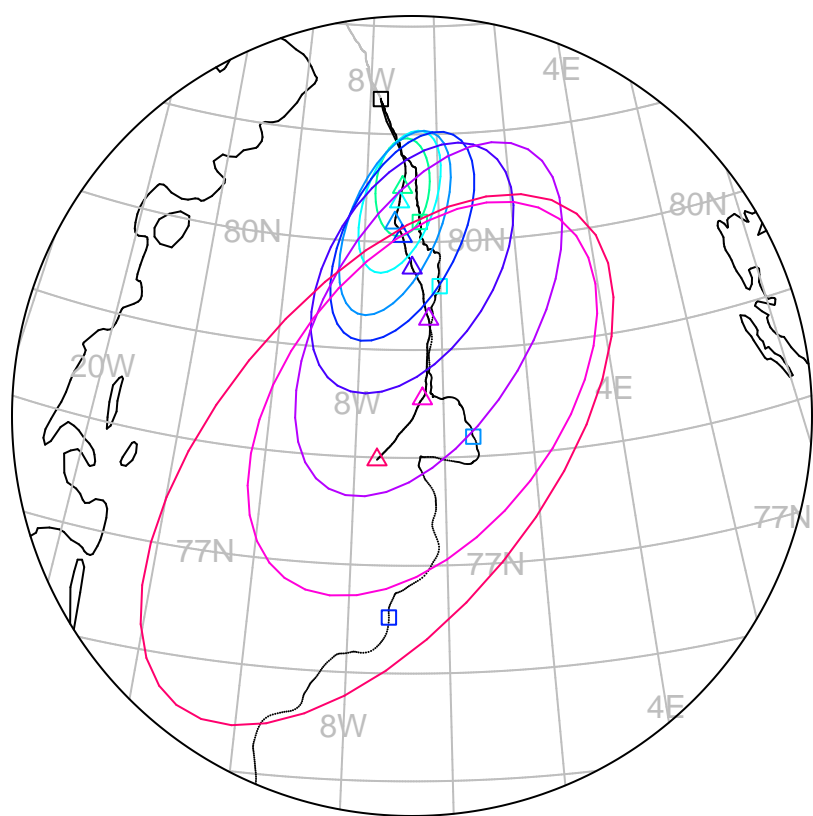


forecast trajectory with 90%-confidence regions
 observed trajectory (colour=lead-time, see right)



Graphical Evaluation of SIDFEx consensus forecast

Initial time (YYYYMMDDHH): 2021051318

Consensus forecast version: 20200221v1

Generated at: 2021-147.013

Forecasts included (age relative to initial time / remaining lead time range, both in days):

ukmo001v1_cpINWPv1 (1.75 / 8.25)

ecmwf001_SEAS5 (12.75 / 111.25)

ukmo001v1_FOAMv1 (1.75 / 5.25)

ukmo001v1_cpINWP-HRv1 (0.75 / 9.25)

nrl001_gofs3.1-shortrange (2.25 / 4.25)

esrl001_SealceVelocity (0.75 / 9.25)

WARNING: This is an experimental forecast product with no warranty

More information: <https://sidfex.polarprediction.net>

Contact: helge.goessling@awi.de