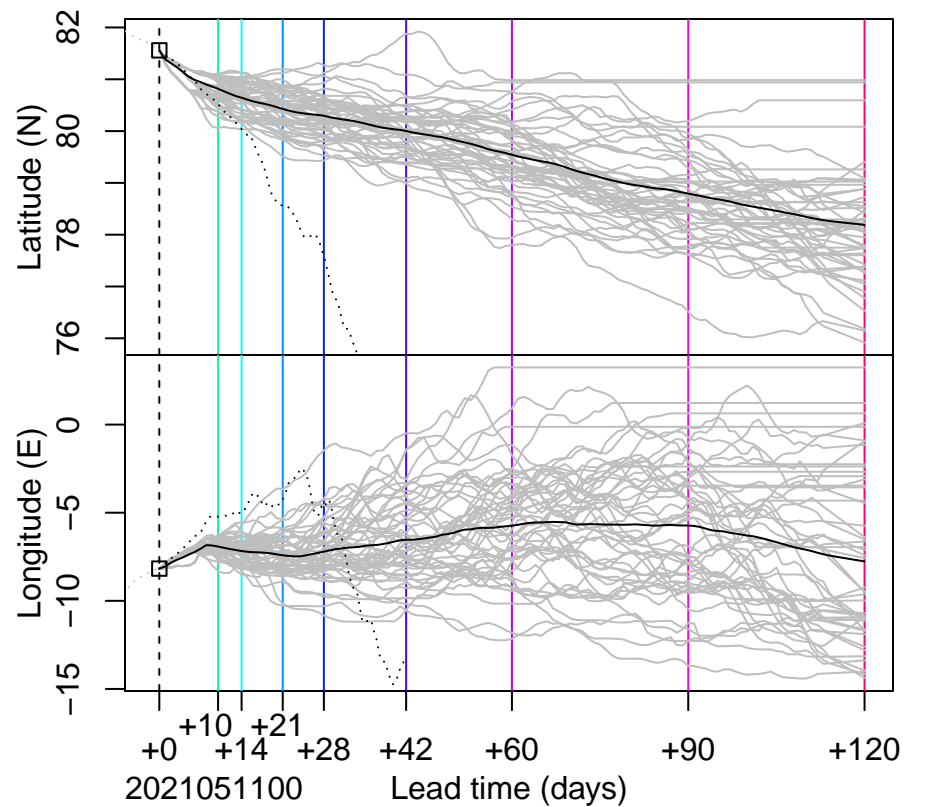
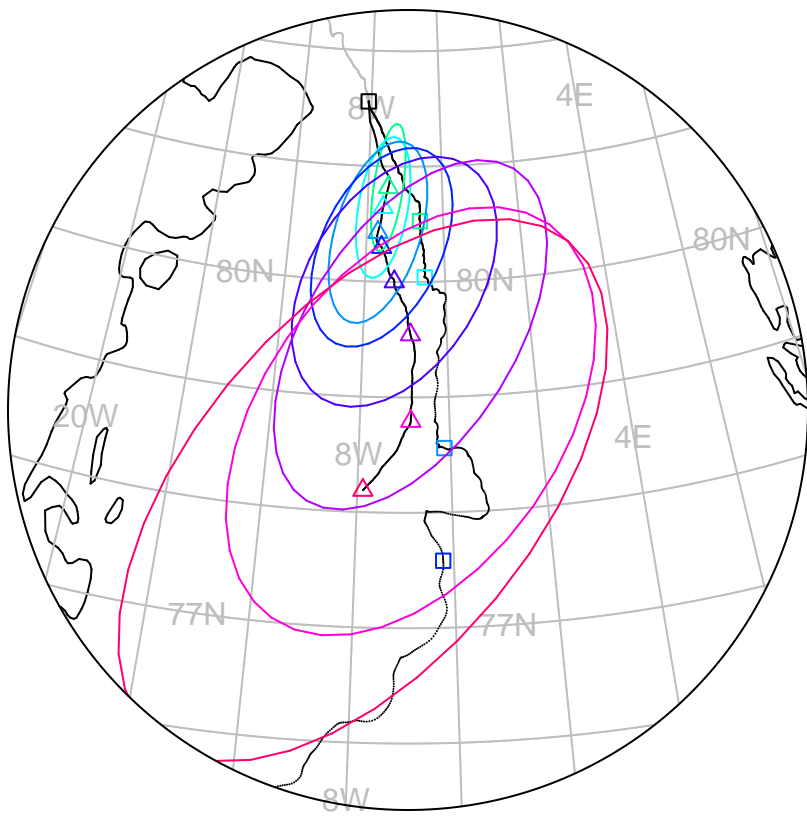


□ △ △ — forecast trajectory with 90%–confidence regions
 □ △ △ observed trajectory (colour=lead-time, see right)



Graphical Evaluation of SIDFEx consensus forecast

Initial time (YYYYMMDDHH): 2021051100

Consensus forecast version: 20200221v1

Generated at: 2021-131.076

Forecasts included (age relative to initial time / remaining lead time range, both in days):

ukmo001v1_cpINWPv1 (1 / 9)

ukmo001v1_FOAMv1 (1 / 6)

ukmo001v1_cpINWP-HRv1 (2 / 8)

nrI001_gofs3.1-shortrange (1.5 / 5)

ecmwf001_SEAS5 (10 / 114)

WARNING: This is an experimental forecast product with no warranty

More information: <https://sidfex.polarprediction.net>

Contact: helge.goessling@awi.de