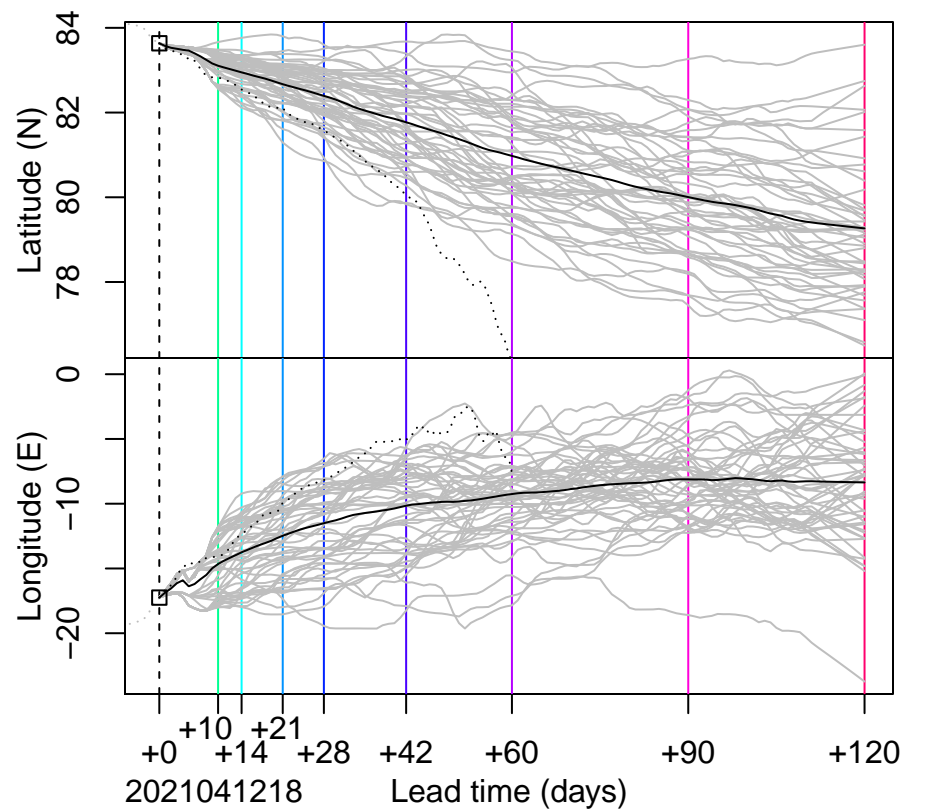
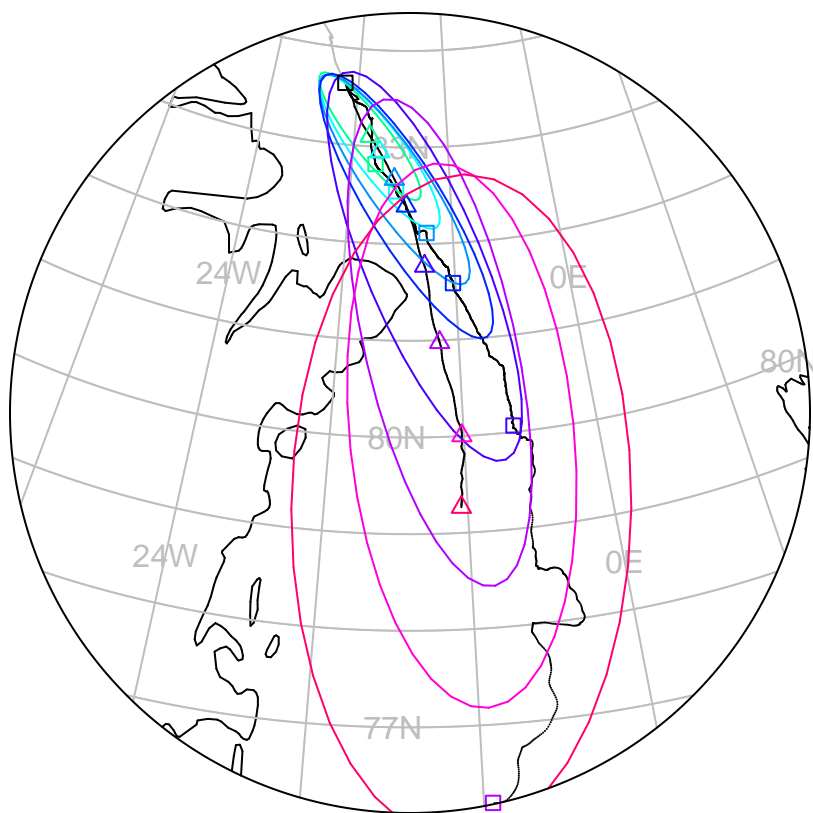


forecast trajectory with 90%-confidence regions  



 observed trajectory (colour=lead-time, see right)



## Graphical Evaluation of SIDFEx consensus forecast

Initial time (YYYYMMDDHH): 2021041218

Consensus forecast version: 20200221v1

Generated at: 2021-102.795

Forecasts included (age relative to initial time / remaining lead time range, both in days):

ukmo001v1\_cpINWPv1 (0.75 / 9.25)

ecmwf001\_SEAS5 (11.75 / 112.25)

ukmo001v1\_FOAMv1 (0.75 / 6.25)

ukmo001v1\_cpINWP-HRv1 (1.75 / 8.25)

nrI001\_gofs3.1-shortrange (1.25 / 5.25)

esrI001\_SealceVelocity (1.75 / 8.25)

**WARNING: This is an experimental forecast product with no warranty**

More information: <https://sidfex.polarprediction.net>

Contact: [helge.goessling@awi.de](mailto:helge.goessling@awi.de)