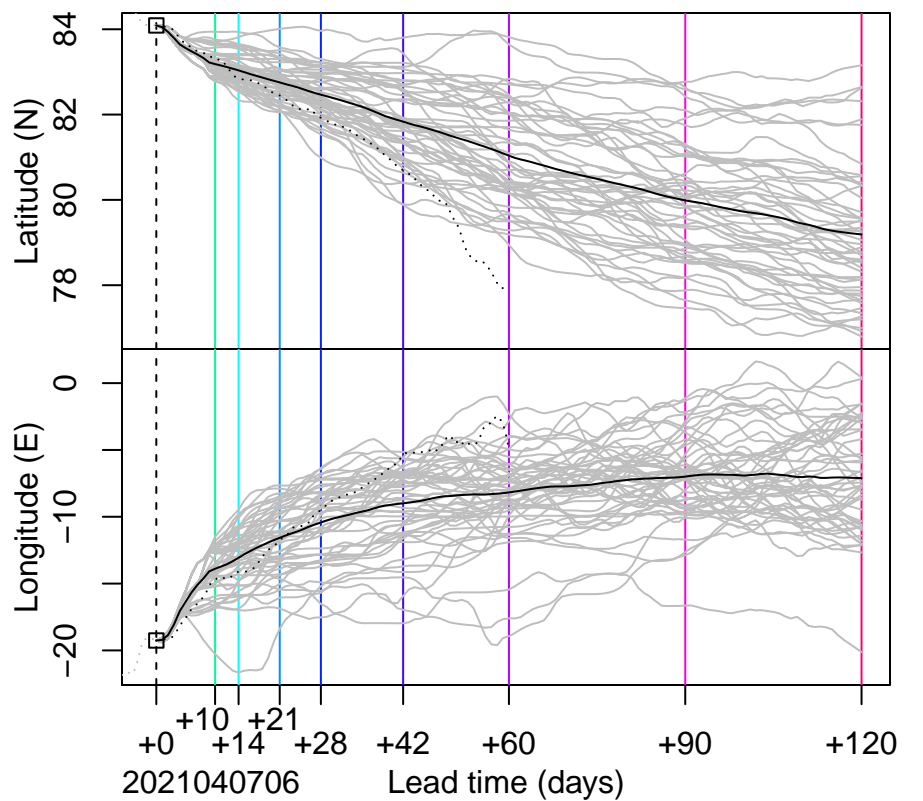
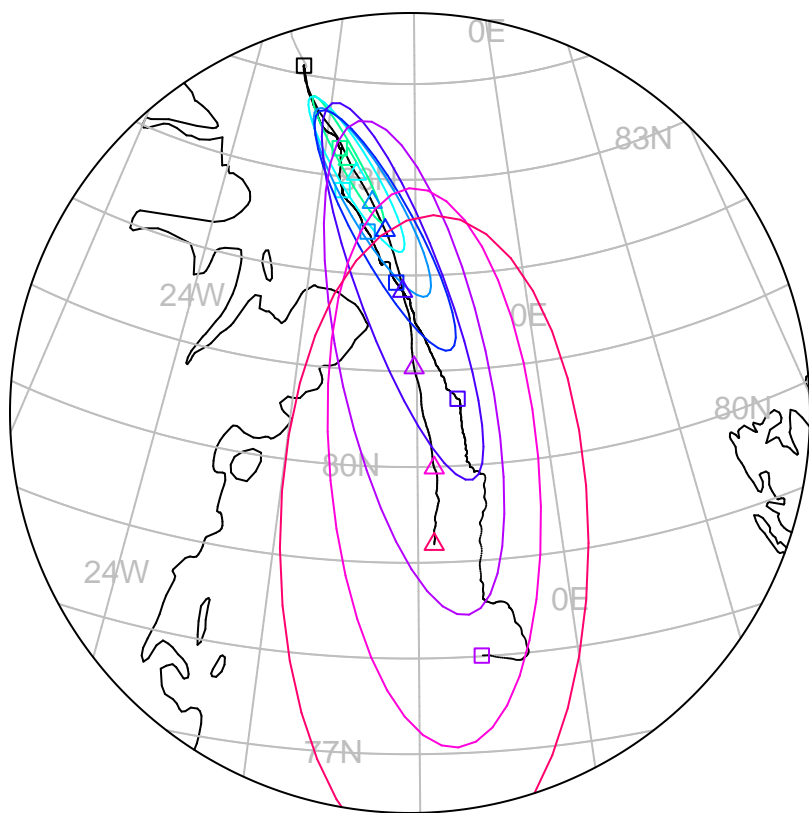


forecast trajectory with 90%-confidence regions
 observed trajectory (colour=lead-time, see right)



Graphical Evaluation of SIDFEx consensus forecast

Initial time (YYYYMMDDHH): 2021040706

Consensus forecast version: 20200221v1

Generated at: 2021-97.343

Forecasts included (age relative to initial time / remaining lead time range, both in days):

ukmo001v1_cplNWPv1 (1.25 / 8.75)

ecmwf001_SEAS5 (6.25 / 117.75)

ukmo001v1_FOAMv1 (1.25 / 5.75)

ukmo001v1_cplNWP-HRv1 (1.25 / 8.75)

nr1001_gofs3.1-shortrange (1.75 / 4.75)

esr1001_SealceVelocity (2.25 / 7.75)

WARNING: This is an experimental forecast product with no warranty

More information: <https://sidfex.polarprediction.net>

Contact: helge.goessling@awi.de