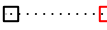
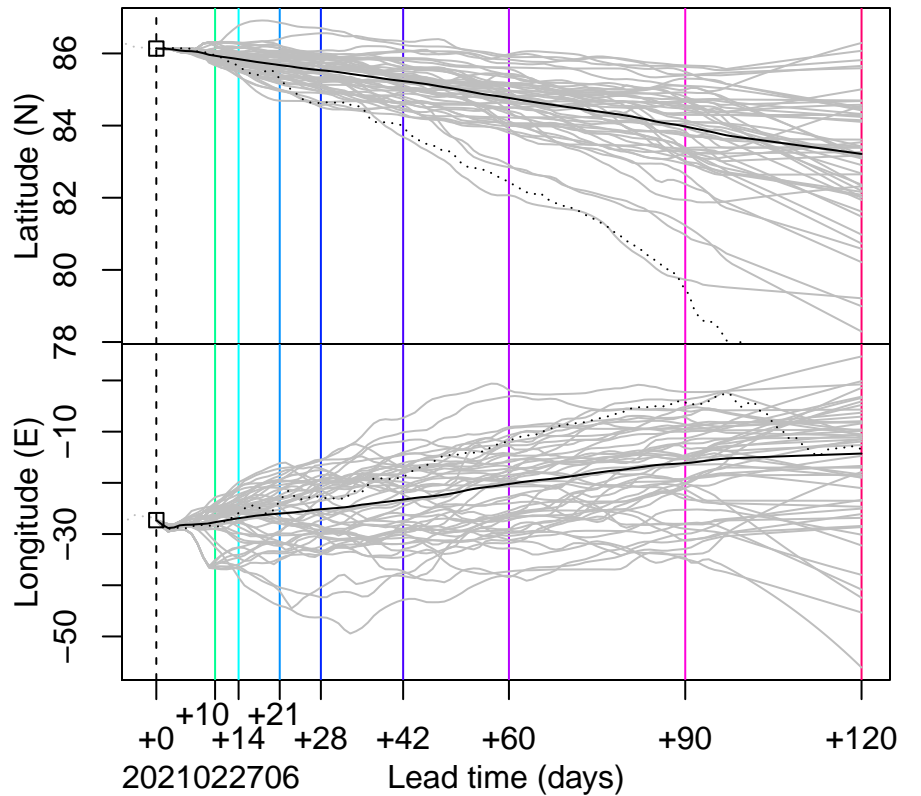
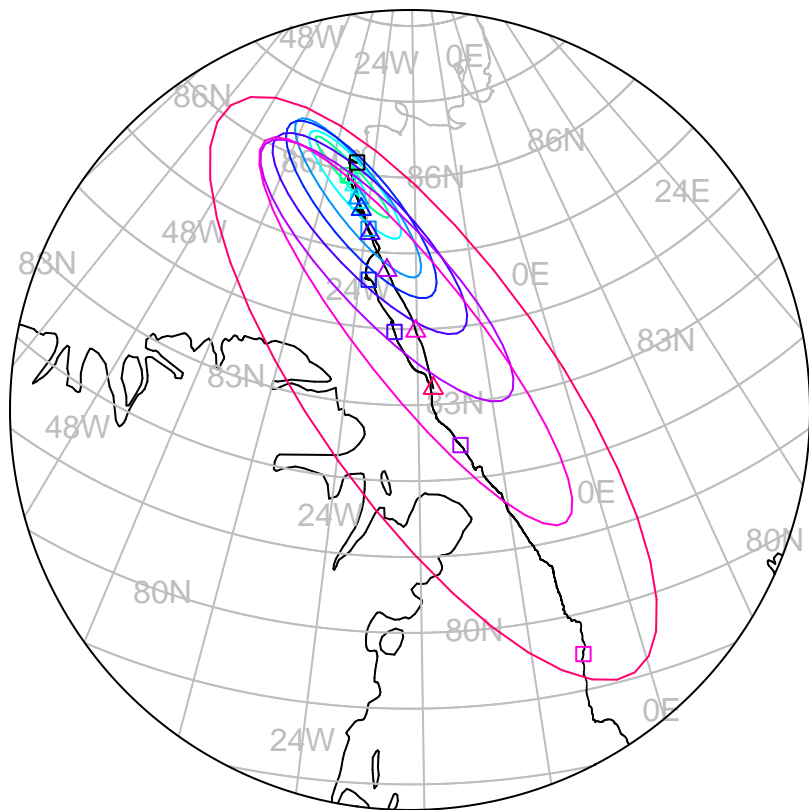
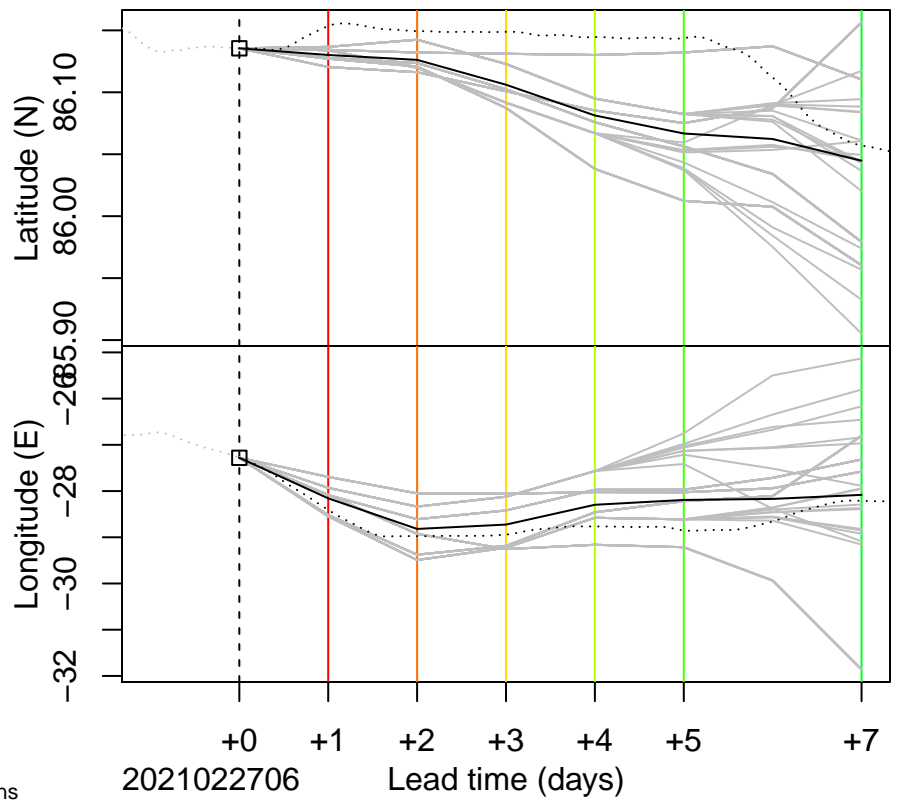
 forecast trajectory with 90%–confidence regions  
 observed trajectory (colour=lead-time, see right)



## Graphical Evaluation of SIDFEx consensus forecast

Initial time (YYYYMMDDHH): 2021022706

Consensus forecast version: 20200221v1

Generated at: 2021-58.352

Forecasts included (age relative to initial time / remaining lead time range, both in days):

ukmo001v1\_cpINWPv1 (1.25 / 8.75)

esrl001\_SealceVelocity (1.25 / 8.75)

ukmo001v1\_FOAMv1 (1.25 / 5.75)

ecmwf001\_SEAS5 (26.25 / 97.75)

ukmo001v1\_cpINWP-HRv1 (1.25 / 8.75)

nlr001\_gofs3.1-shortrange (1.75 / 4.75)

eccc001\_giops (1.25 / 8.75)

**WARNING: This is an experimental forecast product with no warranty**

More information: <https://sidfex.polarprediction.net>

Contact: [helge.goessling@awi.de](mailto:helge.goessling@awi.de)