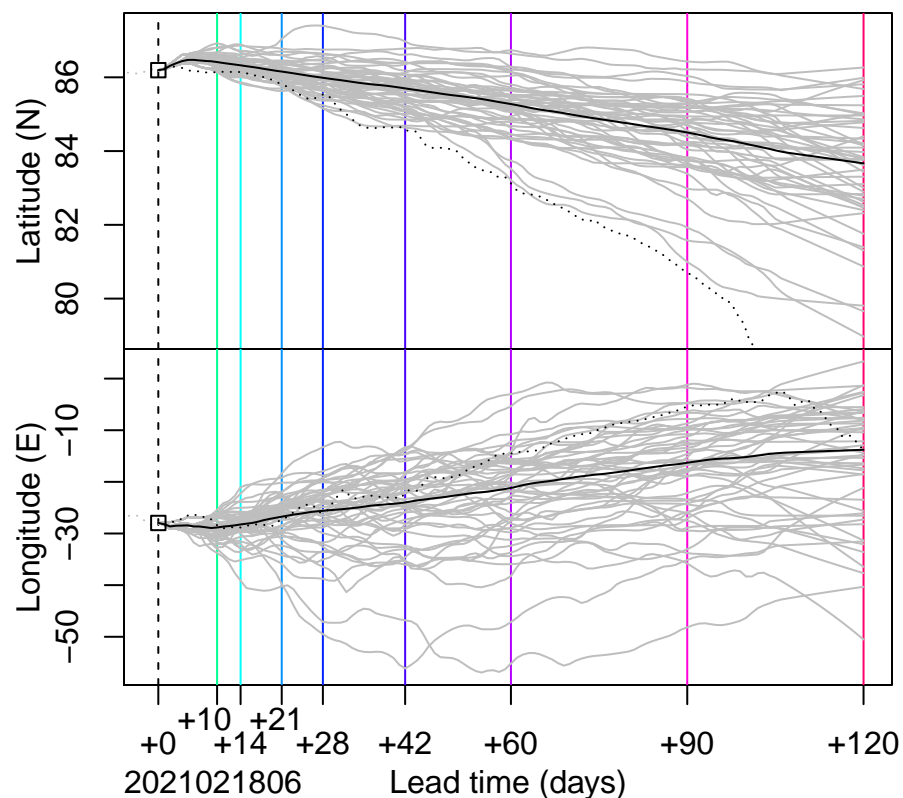
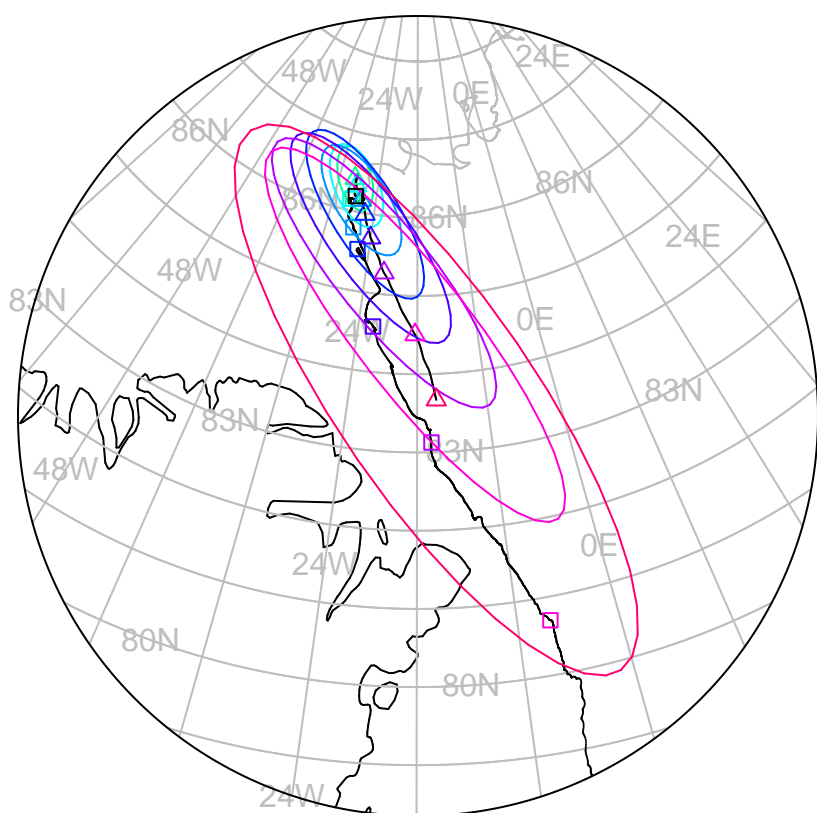


forecast trajectory with 90%-confidence regions

 observed trajectory (colour=lead-time, see right)



Graphical Evaluation of SIDFEx consensus forecast

Initial time (YYYYMMDDHH): 2021021806

Consensus forecast version: 20200221v1

Generated at: 2021-49.299

Forecasts included (age relative to initial time / remaining lead time range, both in days):

ukmo001v1_cplINWPv1 (1.25 / 8.75)

ecmf001_SEAS5 (17.25 / 106.75)

ukmo001v1_FOAMv1 (1.25 / 5.75)

nrl001_gofs3.1-shortrange (1.75 / 4.75)

eccc001_giops (1.25 / 8.75)

esrl001_SealceVelocity (1.25 / 8.75)

WARNING: This is an experimental forecast product with no warranty

More information: <https://sidfex.polarprediction.net>

Contact: helge.goessling@awi.de