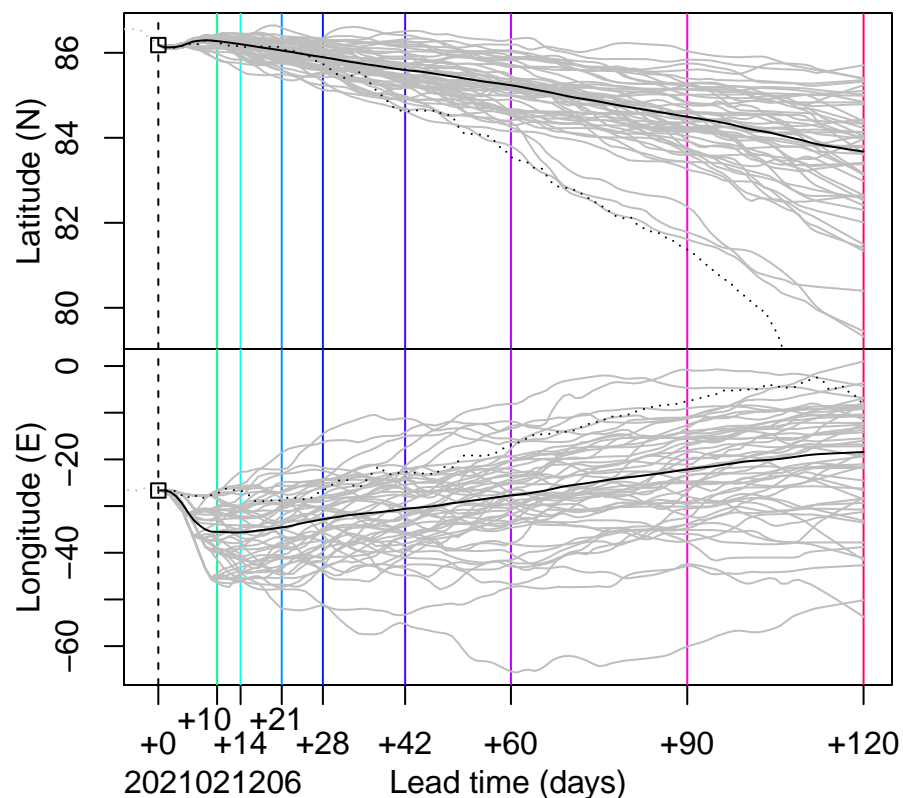
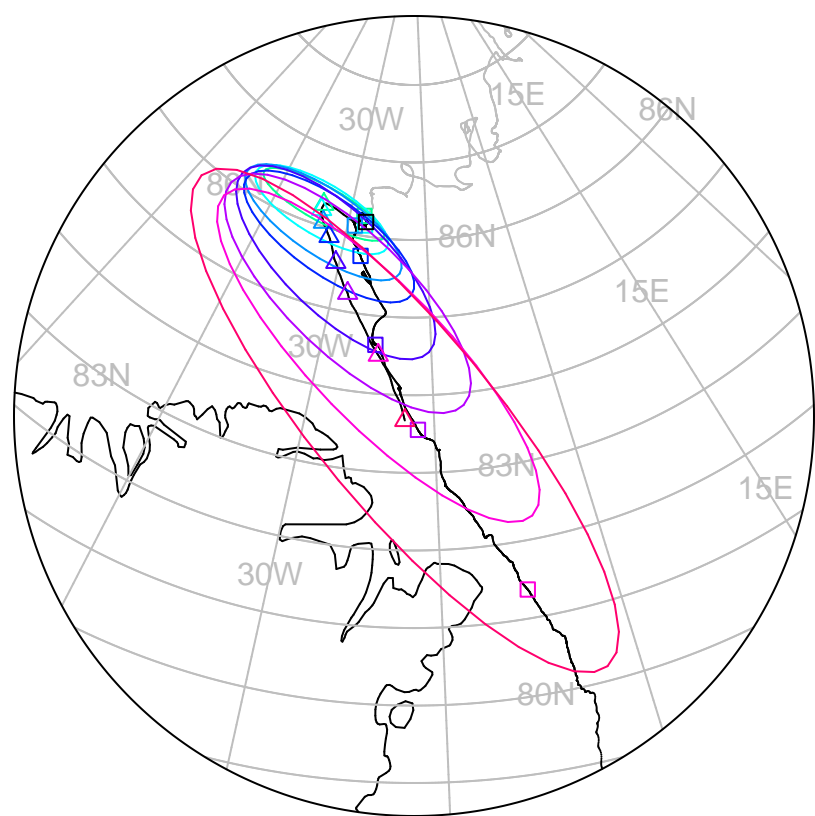


forecast trajectory with 90%–confidence regions  
 observed trajectory (colour=lead–time, see right)



## Graphical Evaluation of SIDFEx consensus forecast

Initial time (YYYYMMDDHH): 2021021206

Consensus forecast version: 20200221v1

Generated at: 2021–43.291

Forecasts included (age relative to initial time / remaining lead time range, both in days):

ukmo001v1_cpINWPv1 (1.25 / 8.75)	esrl001_SealceVelocity (1.25 / 8.75)
ukmo001v1_FOAMv1 (1.25 / 5.75)	ecmwf001_SEAS5 (11.25 / 112.75)
ukmo001v1_cpINWP–HRv1 (1.25 / 8.75)	
nrI001_gofs3.1–shortrange (1.75 / 4.75)	
eccc001_giops (1.25 / 8.75)	

**WARNING: This is an experimental forecast product with no warranty**

More information: <https://sidfex.polarprediction.net>

Contact: [helge.goessling@awi.de](mailto:helge.goessling@awi.de)