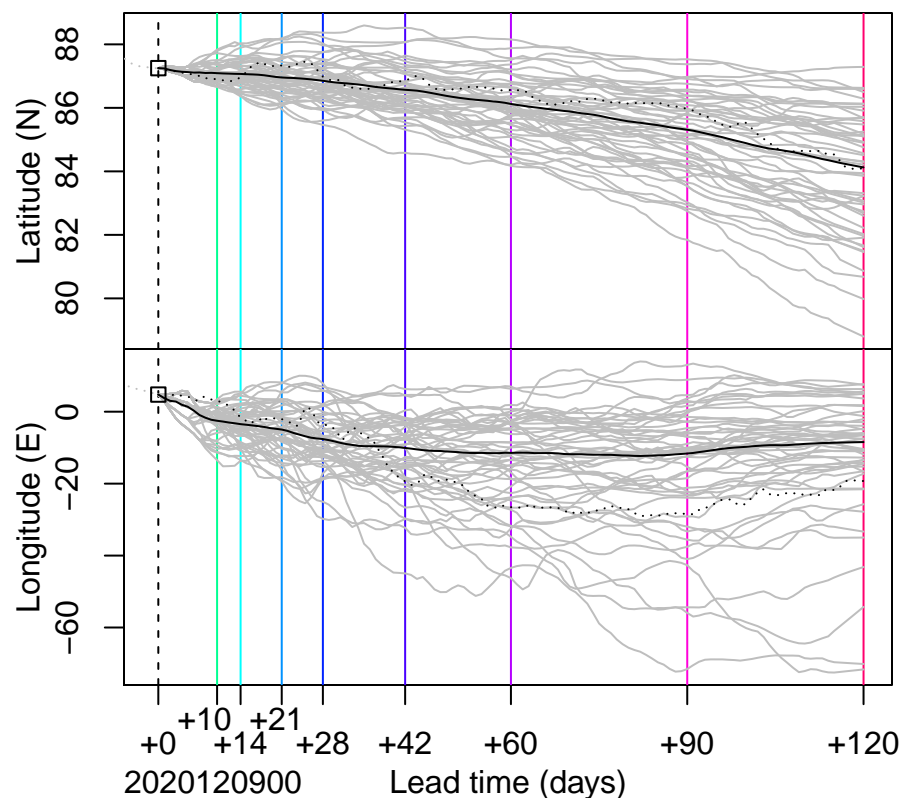
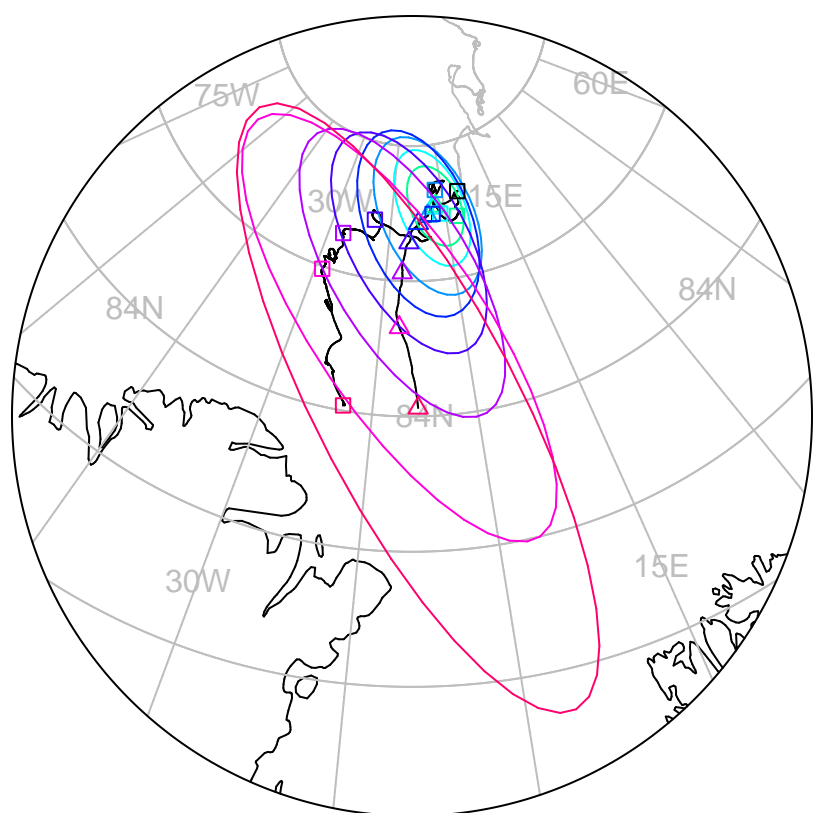


□ △ △ forecast trajectory with 90%–confidence regions  
 □ □ observed trajectory (colour=lead–time, see right)



## Graphical Evaluation of SIDFEx consensus forecast

Initial time (YYYYMMDDHH): 2020120900

Consensus forecast version: 20200221v1

Generated at: 2020–344.17

Forecasts included (age relative to initial time / remaining lead time range, both in days):

ukmo001v1_cpINWPv1 (1 / 9)	esri001_SealceVelocity (1 / 9)
ukmo001v1_FOAMv1 (1 / 6)	metno001_RK2 (2 / 7)
ukmo001v1_cpINWP–HRv1 (2 / 8)	ecmwf001_SEAS5 (8 / 116)
nr1001_gofs3.1–shortrange (1.5 / 5)	
eccc001_giops (1 / 9)	

**WARNING: This is an experimental forecast product with no warranty**

More information: <https://sidfex.polarprediction.net>

Contact: [helge.goessling@awi.de](mailto:helge.goessling@awi.de)