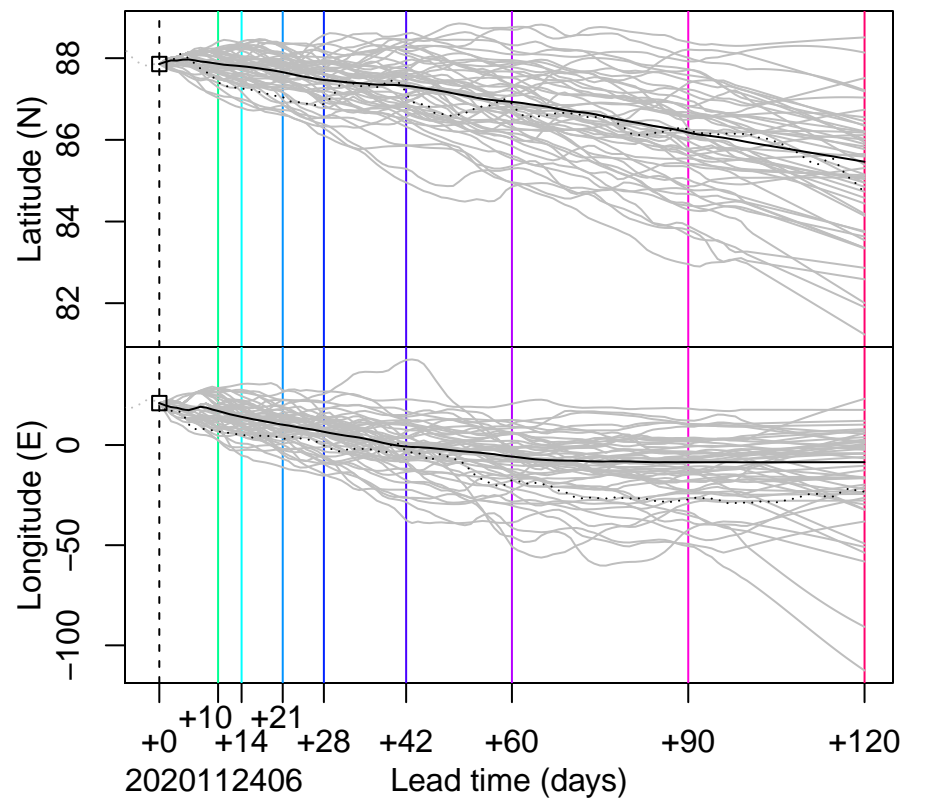
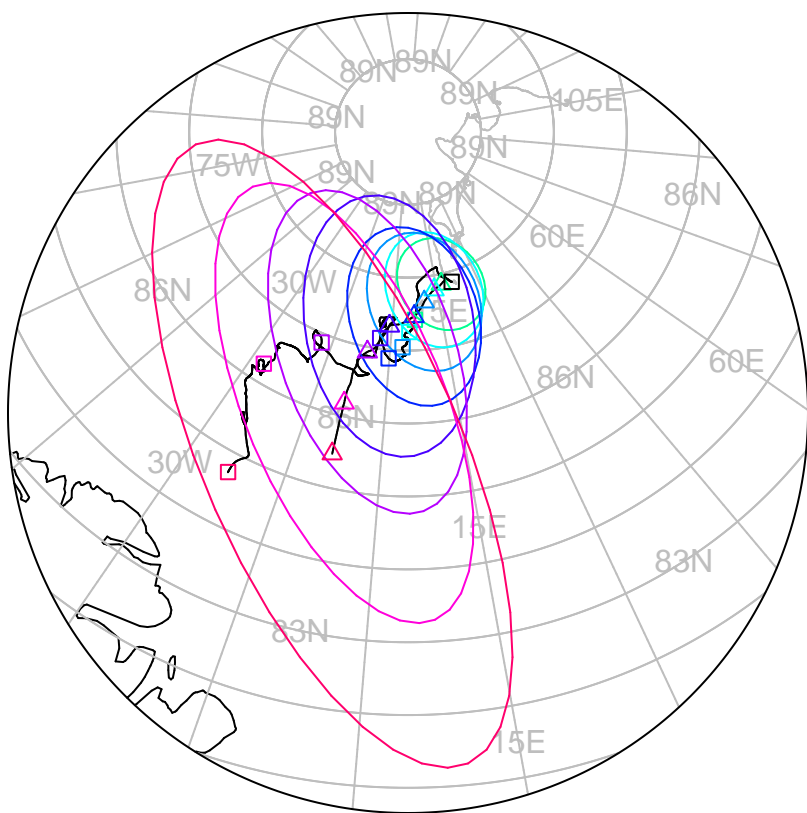
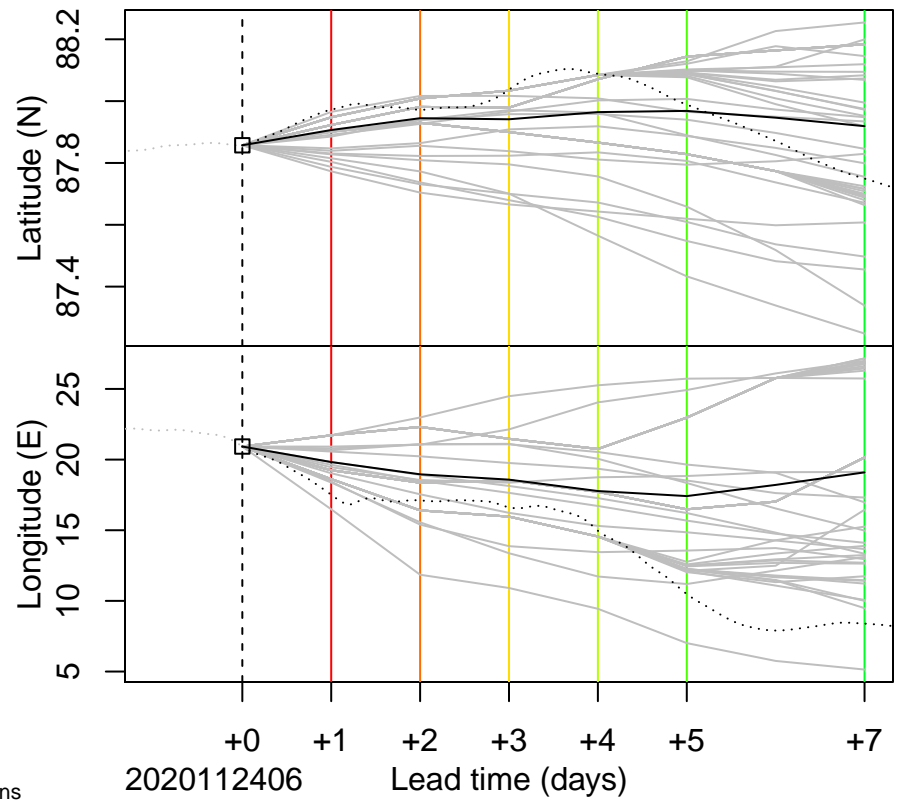


forecast trajectory with 90%-confidence regions  
 observed trajectory (colour=lead-time, see right)



## Graphical Evaluation of SIDFEx consensus forecast

Initial time (YYYYMMDDHH): 2020112406

Consensus forecast version: 20200221v1

Generated at: 2020-329.385

Forecasts included (age relative to initial time / remaining lead time range, both in days):

nrl001\_gofs3.1-shorrange (1.75 / 4.75)

esrl001\_SealceVelocity (1.25 / 8.75)

metno001\_RK2 (2.25 / 6.75)

ecmwf001\_SEAS5 (23.25 / 100.75)

**WARNING:** This is an experimental forecast product with no warranty

More information: <https://sidfex.polarprediction.net>

Contact: [helge.goessling@awi.de](mailto:helge.goessling@awi.de)