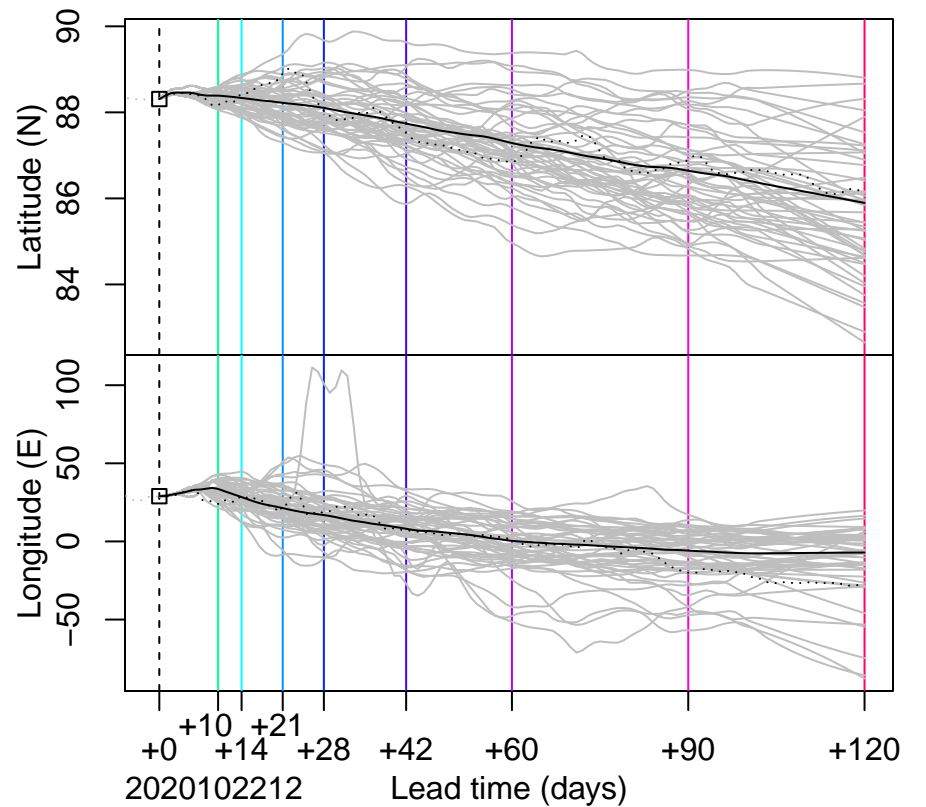
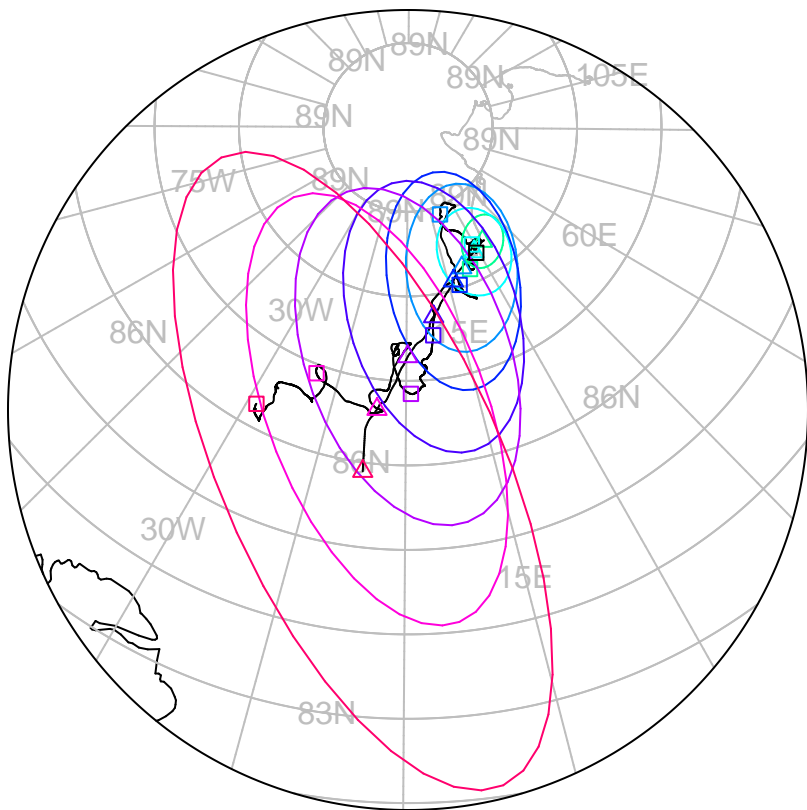


□ △ △ forecast trajectory with 90%-confidence regions
 □ □ observed trajectory (colour=lead-time, see right)



Graphical Evaluation of SIDFEx consensus forecast

Initial time (YYYYMMDDHH): 2020102212

Consensus forecast version: 20200221v1

Generated at: 2020-298.496

Forecasts included (age relative to initial time / remaining lead time range, both in days):

ukmo001v1_cpINWPv1 (0.5 / 9.5)

ecmwf001_SEAS5 (21.5 / 102.5)

ukmo001v1_FOAMv1 (0.5 / 6.5)

ukmo001v1_cpINWP-HRv1 (0.5 / 9.5)

nrl001_gofs3.1-shortrange (0 / 6.5)

esrl001_SealceVelocity (0.5 / 9.5)

WARNING: This is an experimental forecast product with no warranty

More information: <https://sidfex.polarprediction.net>

Contact: helge.goessling@awi.de