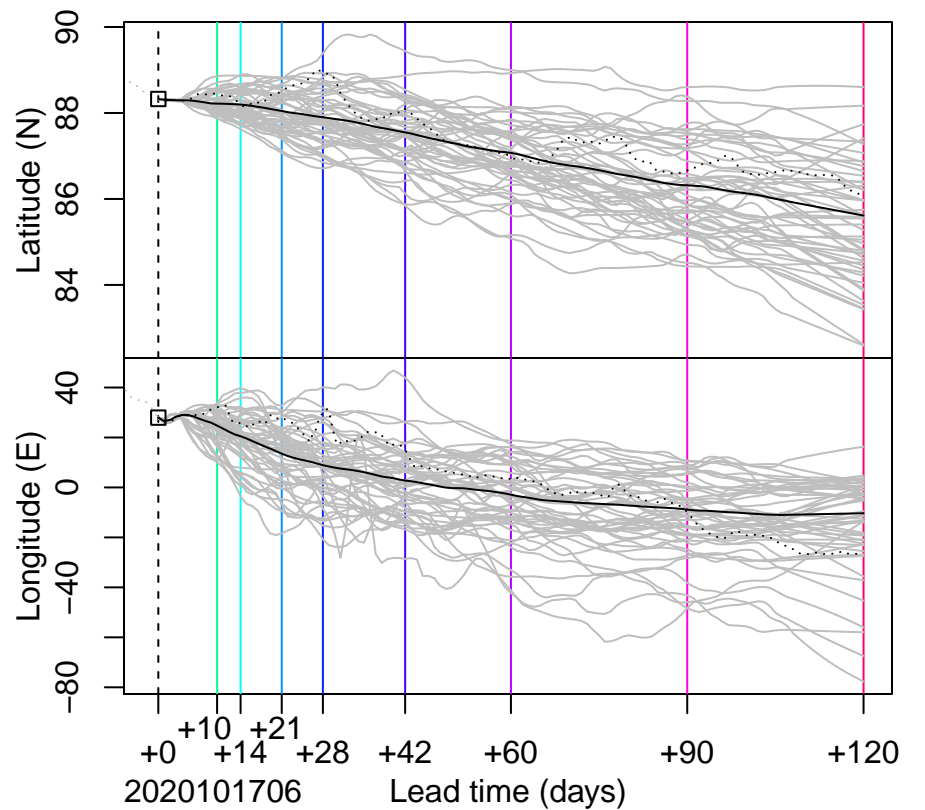
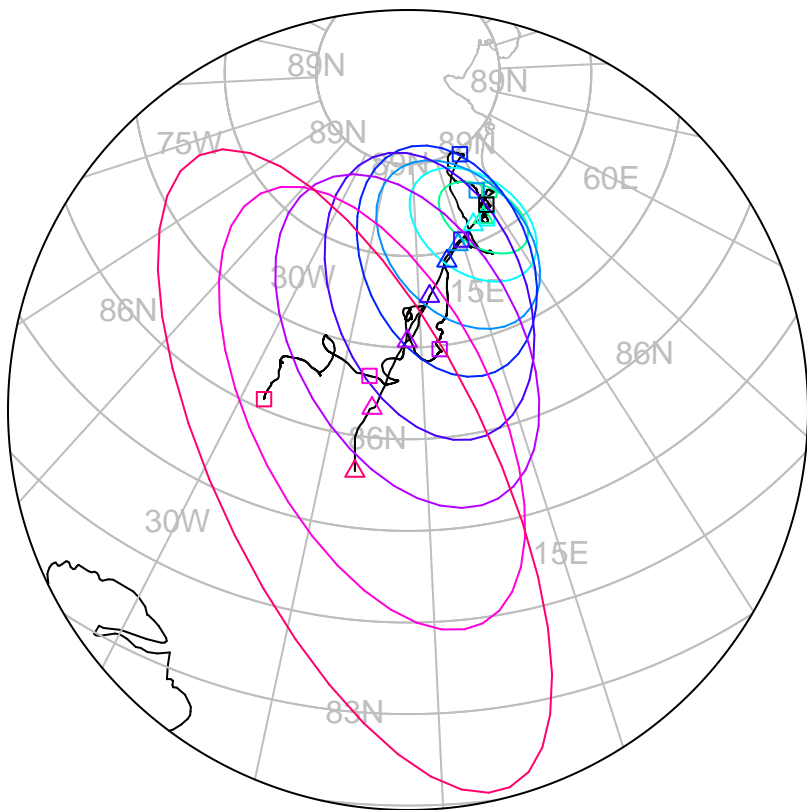


□ △ △ forecast trajectory with 90%-confidence regions
 □ □ □ observed trajectory (colour=lead-time, see right)



Graphical Evaluation of SIDFEx consensus forecast

Initial time (YYYYMMDDHH): 2020101706

Consensus forecast version: 20200221v1

Generated at: 2020-291.291

Forecasts included (age relative to initial time / remaining lead time range, both in days):

ukmo001v1_cpINWPv1 (1.25 / 8.75)

ukmo001v1_FOAMv1 (1.25 / 5.75)

nrl001_gofs3.1-shorrange (2.75 / 3.75)

esrl001_SealceVelocity (1.25 / 8.75)

ecmwf001_SEAS5 (16.25 / 107.75)

WARNING: This is an experimental forecast product with no warranty

More information: <https://sidfex.polarprediction.net>

Contact: helge.goessling@awi.de