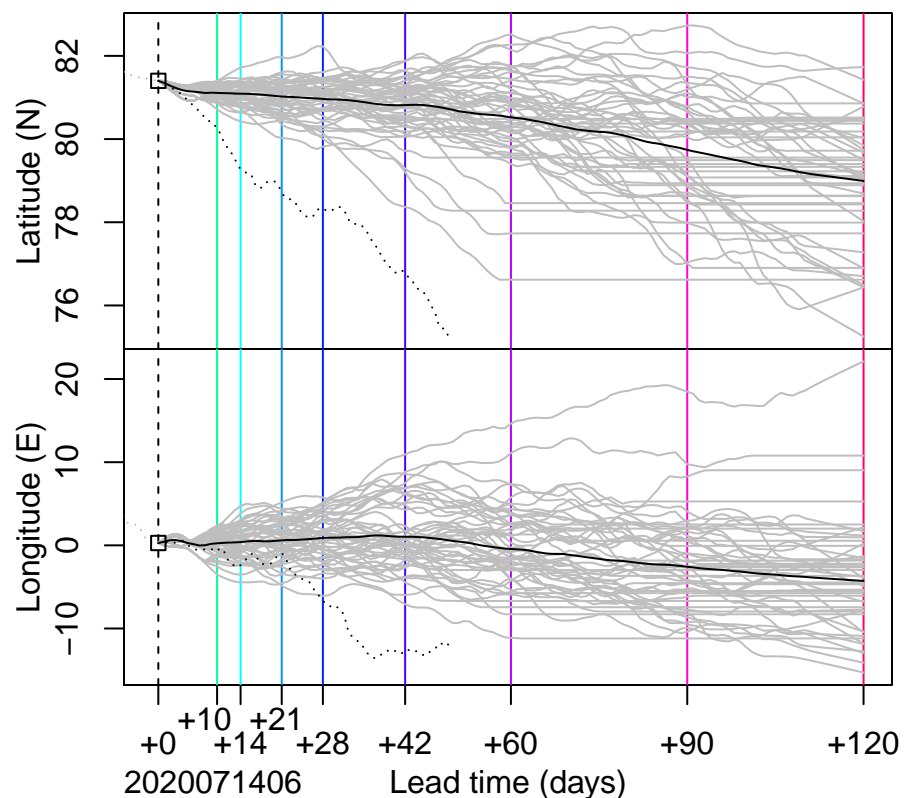
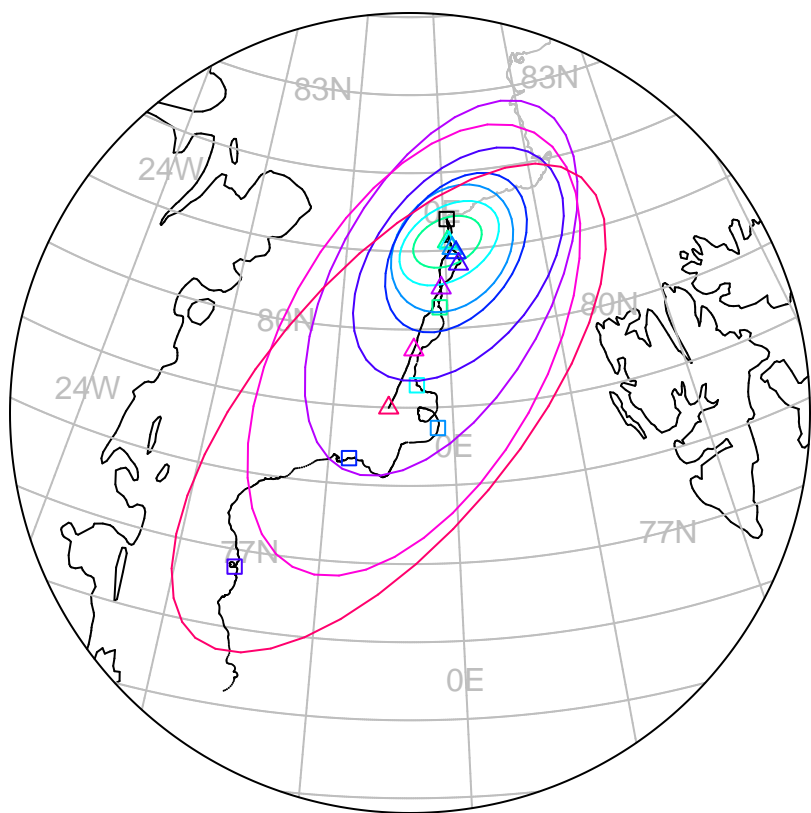
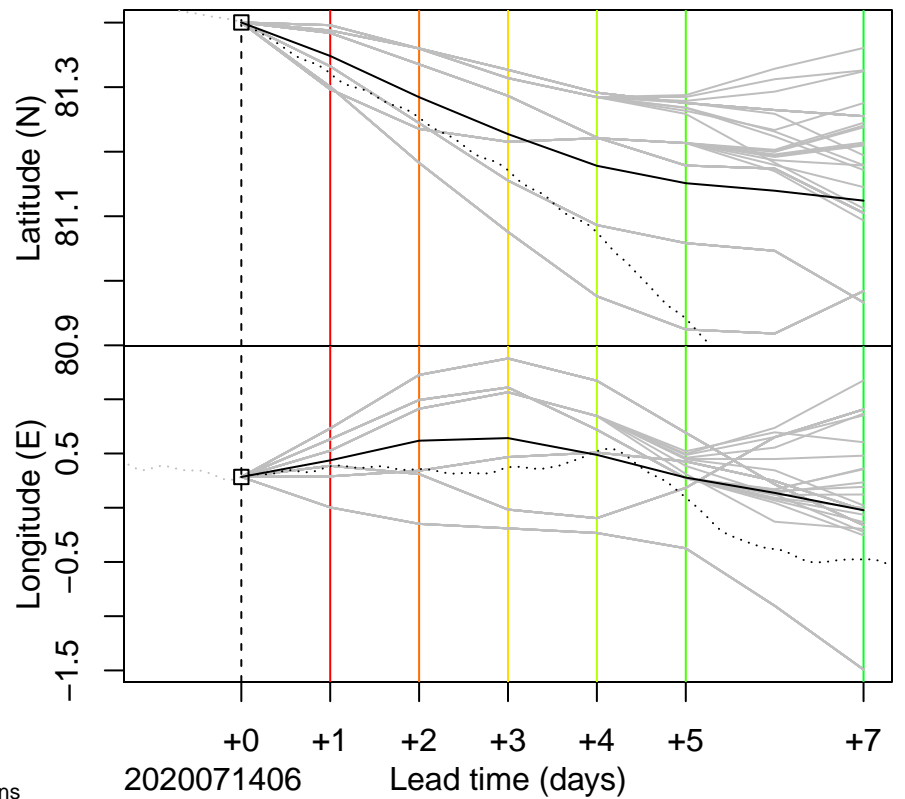


forecast trajectory with 90%–confidence regions

 observed trajectory (colour=lead-time, see right)



Graphical Evaluation of SIDFEx consensus forecast

Initial time (YYYYMMDDHH): 2020071406

Consensus forecast version: 20200221v0

Generated at: 2020-196.309

Forecasts included (age relative to initial time / remaining lead time range, both in days):

ukmo001v1_cpINWPv1 (1.25 / 8.75)	esrl001_SealceVelocity (1.25 / 8.75)
ukmo001v1_FOAMv1 (1.25 / 5.75)	ecmwf001_SEAS5 (13.25 / 110.75)
ukmo001v1_cpINWP-HRv1 (2.25 / 7.75)	
nrl001_gofs3.1-shortrange (1.75 / 4.75)	
eccc001_giops (2.25 / 7.75)	

WARNING: This is an experimental forecast product with no warranty

More information: <https://sidfex.polarprediction.net>

Contact: helge.goessling@awi.de