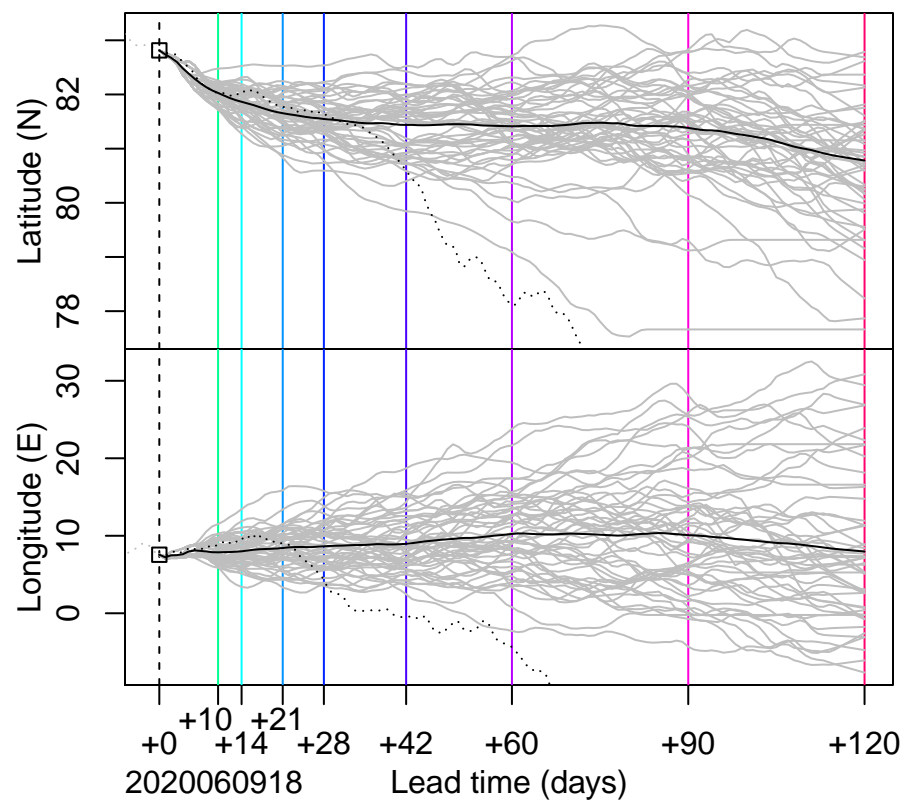
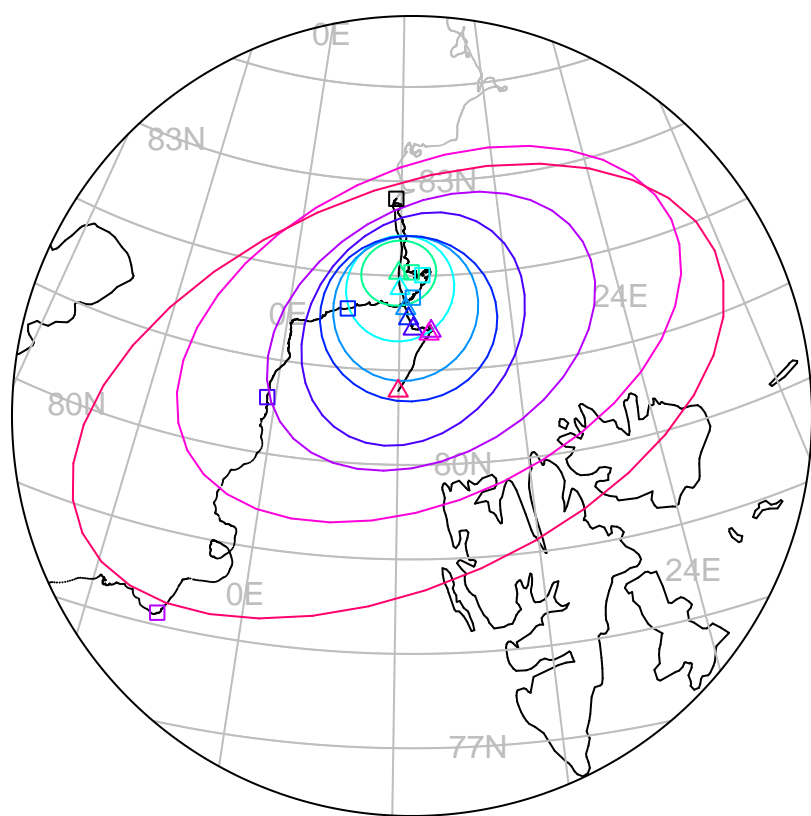


forecast trajectory with 90%–confidence regions  
 observed trajectory (colour=lead–time, see right)



## Graphical Evaluation of SIDFEx consensus forecast

Initial time (YYYYMMDDHH): 2020060918

Consensus forecast version: 20200221v0

Generated at: 2020–161.796

Forecasts included (age relative to initial time / remaining lead time range, both in days):

ukmo001v1\_cpINWPv1 (0.75 / 9.25)

esrl001\_SealceVelocity (1.75 / 8.25)

ukmo001v1\_FOAMv1 (0.75 / 6.25)

ecmwf001\_SEAS5 (8.75 / 115.25)

ukmo001v1\_cpINWP–HRv1 (1.75 / 8.25)

nlr001\_gofs3.1–shortrange (1.25 / 5.25)

eccc001\_giops (1.75 / 8.25)

**WARNING: This is an experimental forecast product with no warranty**

More information: <https://sidfex.polarprediction.net>

Contact: [helge.goessling@awi.de](mailto:helge.goessling@awi.de)