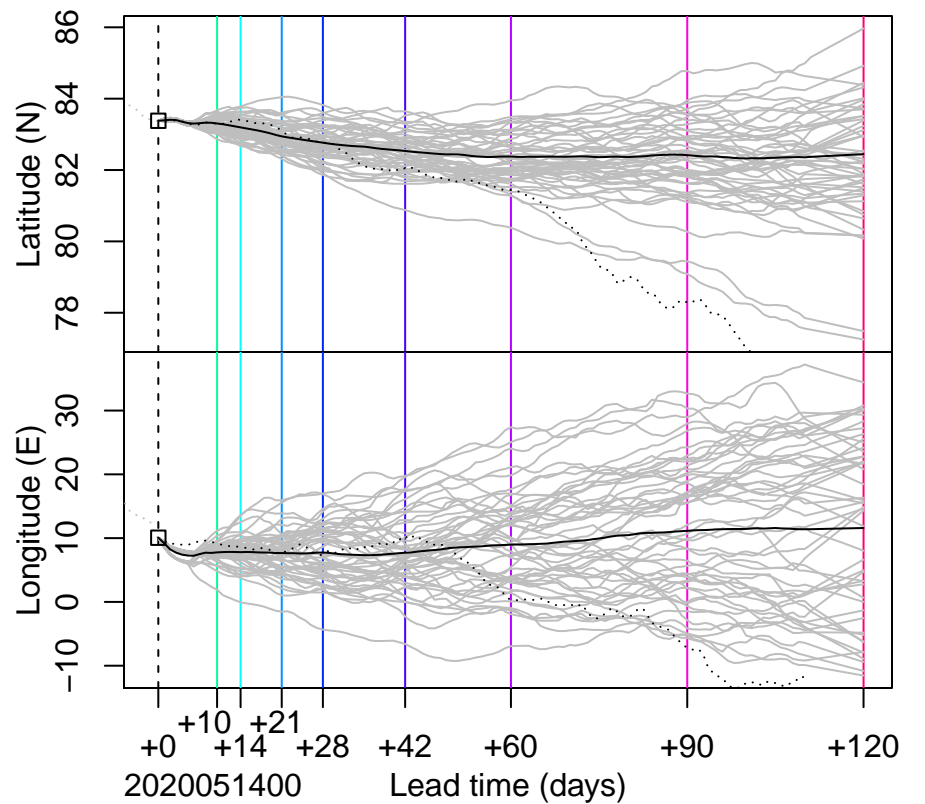
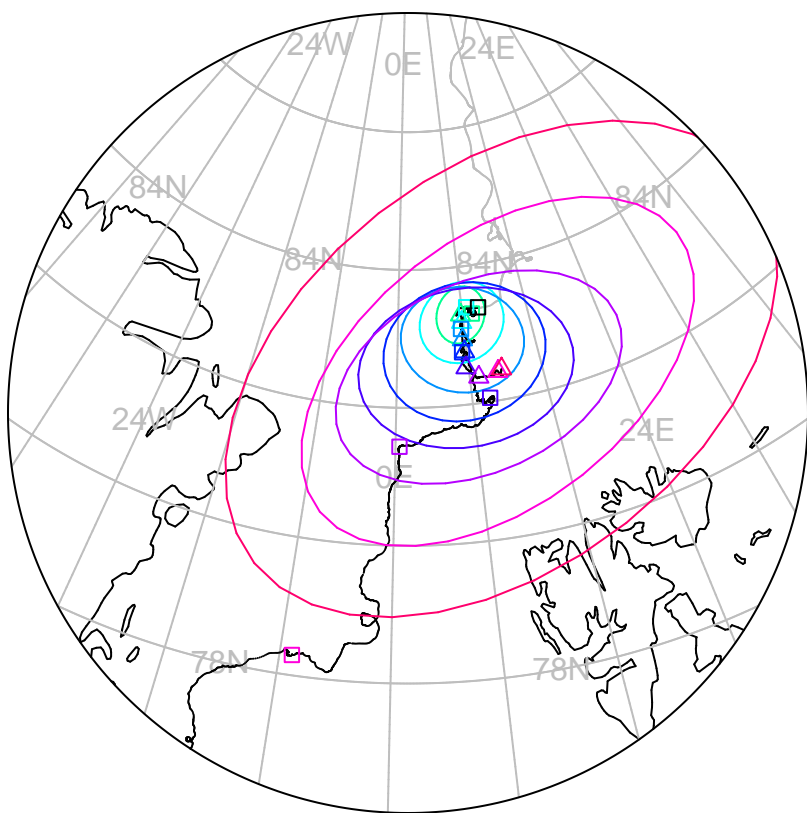


forecast trajectory with 90%-confidence regions

 observed trajectory (colour=lead-time, see right)



Graphical Evaluation of SIDFEx consensus forecast

Initial time (YYYYMMDDHH): 2020051400

Consensus forecast version: 20200221v0

Generated at: 2020-135.25

Forecasts included (age relative to initial time / remaining lead time range, both in days):

ukmo001v1_cpINWPv1 (1 / 9)	esrl001_SealceVelocity (1 / 9)
ukmo001v1_FOAMv1 (1 / 6)	ecmwf001_SEAS5 (13 / 111)
ukmo001v1_cpINWP-HRv1 (2 / 8)	
nrl001_gofs3.1-shortrange (1.5 / 5)	
eccc001_giops (1 / 9)	

WARNING: This is an experimental forecast product with no warranty

More information: <https://sidfex.polarprediction.net>

Contact: helge.goessling@awi.de