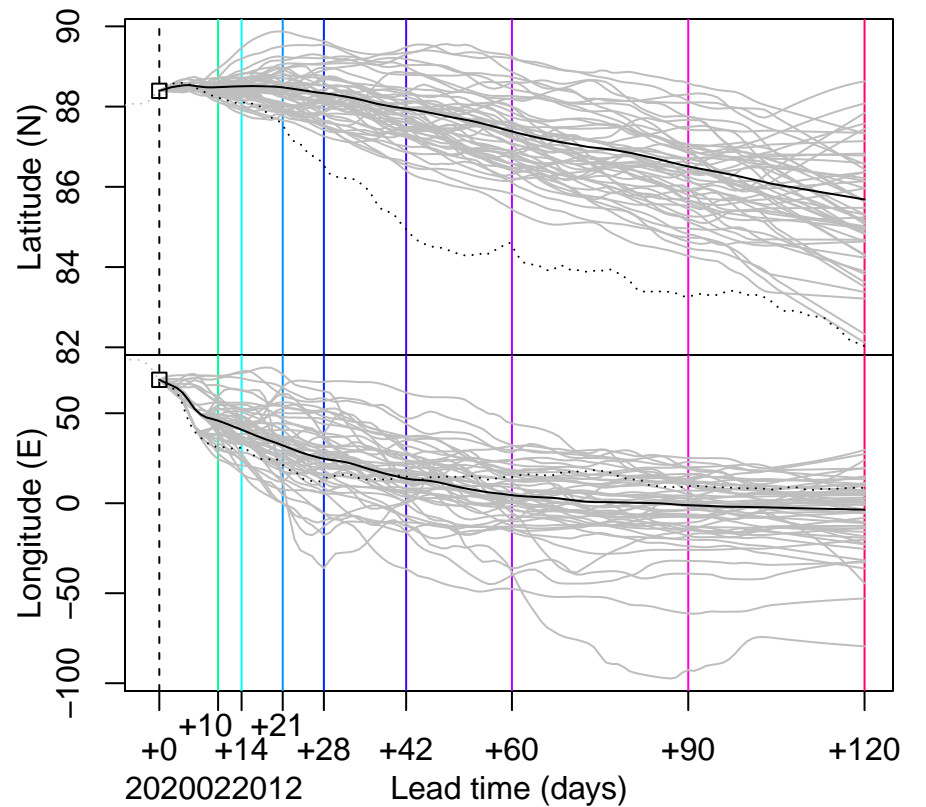
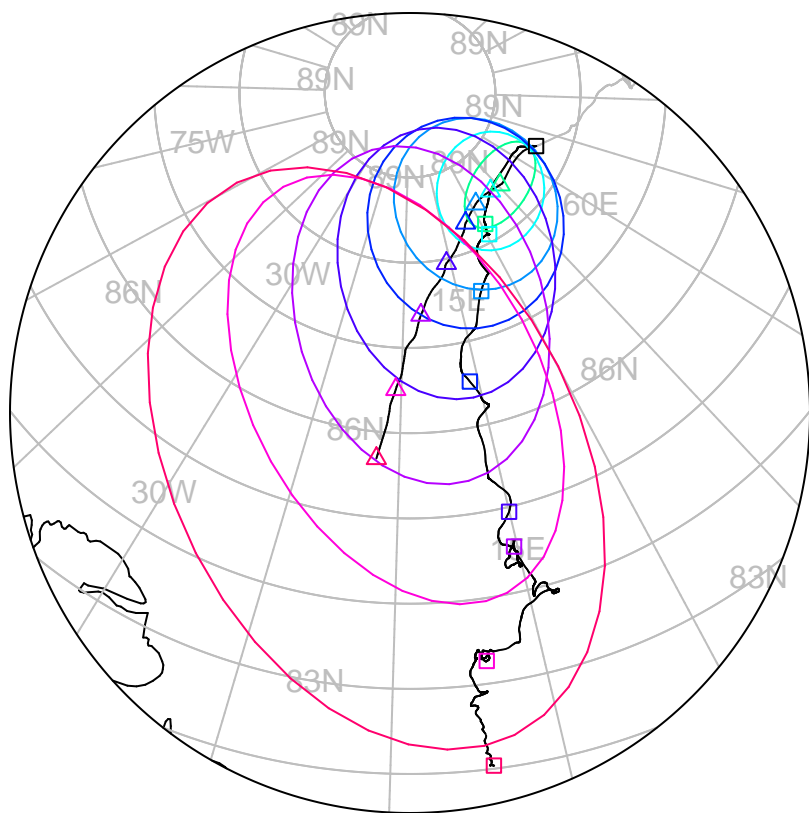


forecast trajectory with 90%-confidence regions

 observed trajectory (colour=lead-time, see right)



Graphical Evaluation of SIDFEx consensus forecast

Initial time (YYYYMMDDHH): 2020022012

Consensus forecast version: 20200221v0

Generated at: 2020-52.614

Forecasts included (age relative to initial time / remaining lead time range, both in days):

nrI001_gofs3.1-shortrange (0 / 6.5)

eccc001_giops (1.5 / 8.5)

esrI001_SealceVelocity (2.5 / 7.5)

ecmwf001_SEAS5 (19.5 / 104.5)

WARNING: This is an experimental forecast product with no warranty

More information: <https://sidfex.polarprediction.net>

Contact: helge.goessling@awi.de