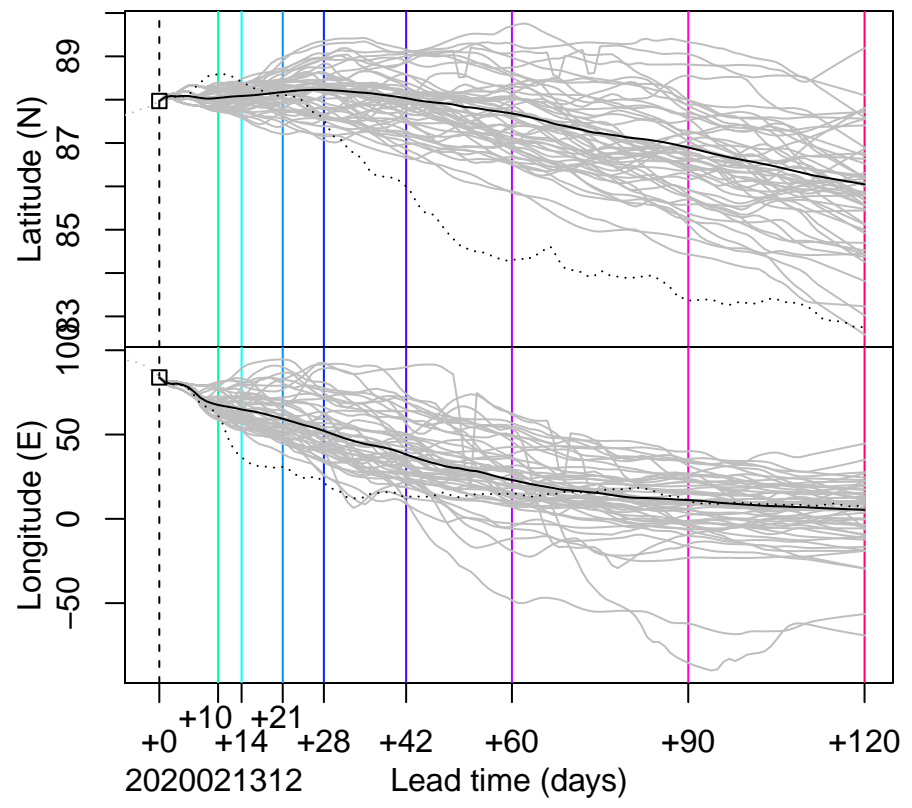
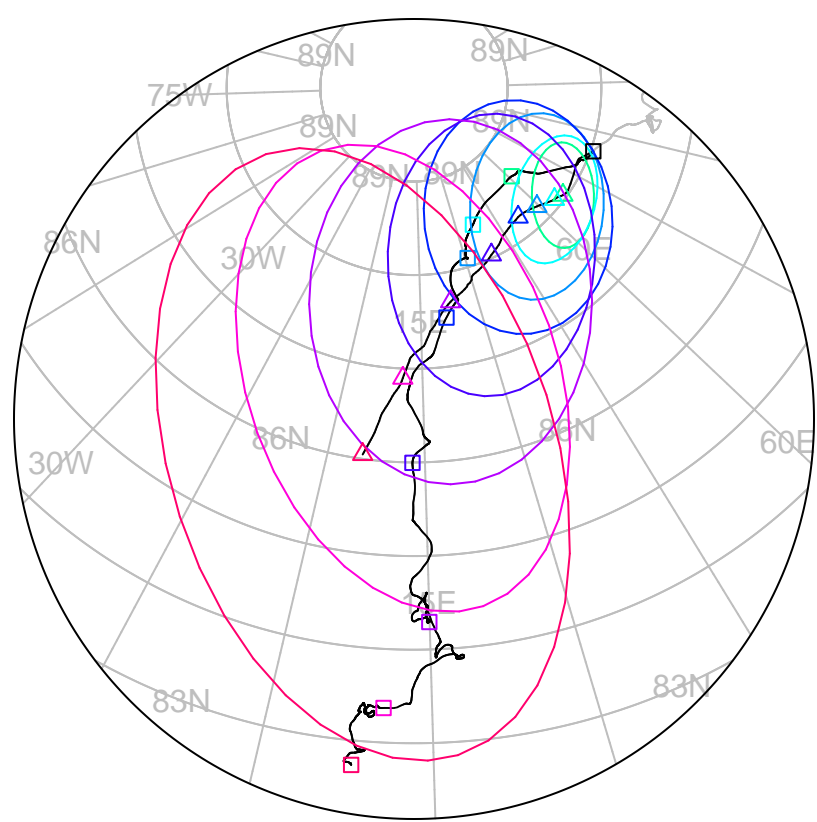


forecast trajectory with 90%-confidence regions
 observed trajectory (colour=lead-time, see right)



Graphical Evaluation of SIDFEx consensus forecast

Initial time (YYYYMMDDHH): 2020021312

Consensus forecast version: 20191118v0
Generated at: 2020-44.571

Forecasts included (age relative to initial time / remaining lead time range, both in days):

- | | |
|-------------------------------------|------------------------------------|
| ukmo001v1_cpINWPv1 (0.5 / 9.5) | esrl001_SealceVelocity (1.5 / 8.5) |
| ukmo001v1_FOAMv1 (0.5 / 6.5) | ecmwf001_SEAS5 (12.5 / 111.5) |
| ukmo001v1_cpINWP-HRv1 (2.5 / 7.5) | |
| nrl001_gofs3.1-shortrange (1 / 5.5) | |
| eccc001_giops (1.5 / 8.5) | |

WARNING: This is an experimental forecast product with no warranty

More information: <https://sidfex.polarprediction.net>
Contact: helge.goessling@awi.de