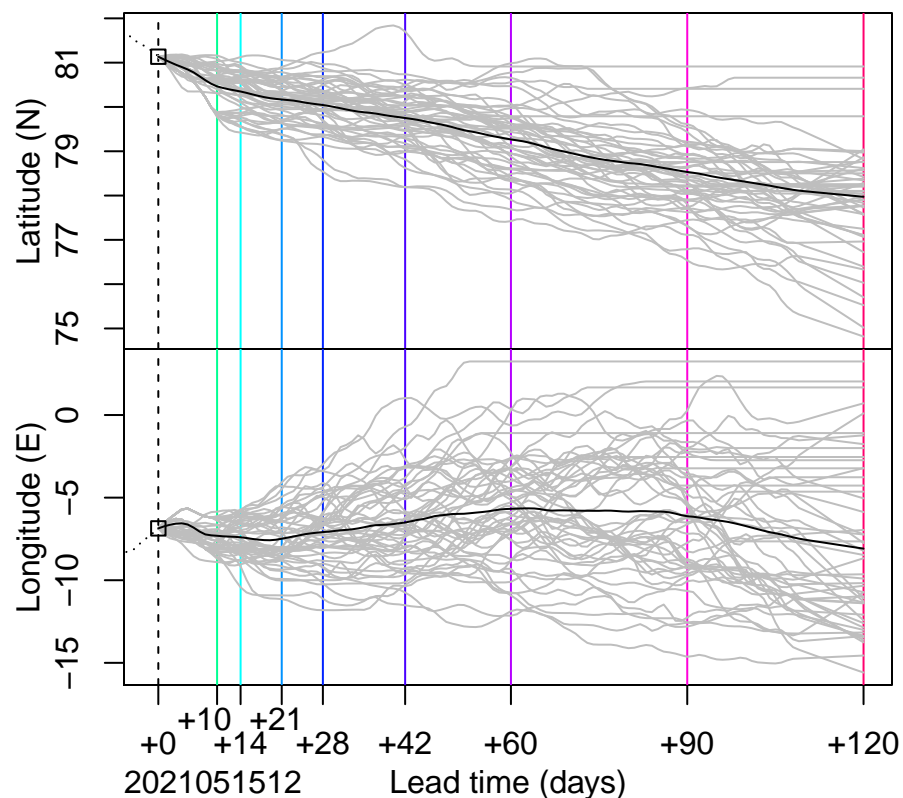
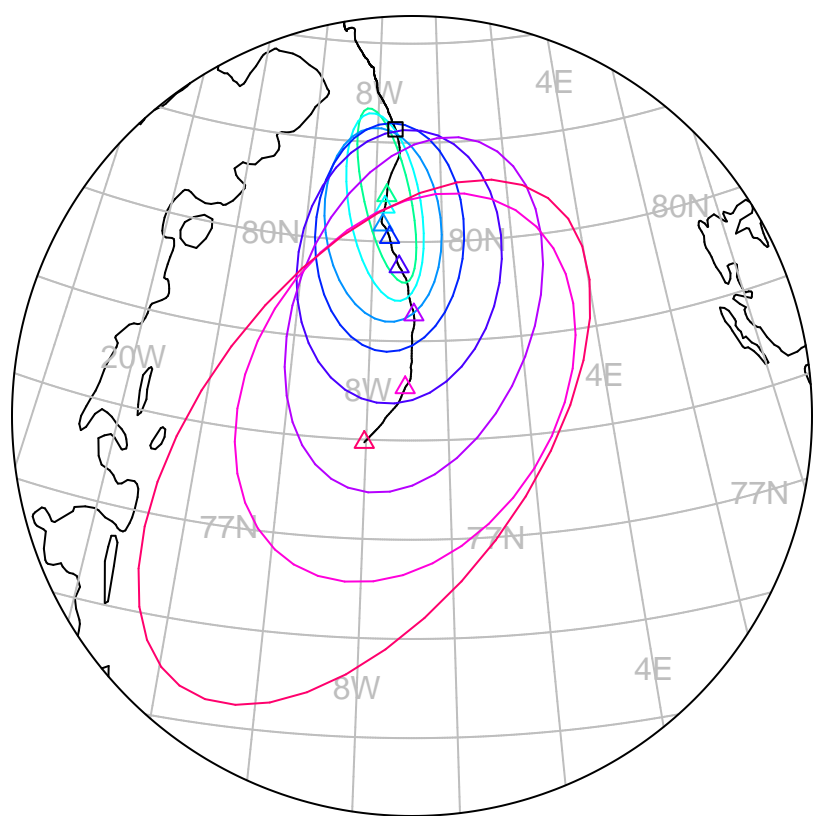


forecast trajectory with 90%–confidence regions

 observed trajectory (colour=lead-time, see right)



SIDFEx consensus forecast for the MOSAiC drift

Initial time (YYYYMMDDHH): 2021051512

Consensus forecast version: 20200221v1

Generated at: 2021-147.014

Forecasts included (age relative to initial time / remaining lead time range, both in days):

ukmo001v1_cpINWP-HRv1 (0.5 / 9.5)

esrl001_SealceVelocity (1.5 / 8.5)

ecmwf001_SEAS5 (14.5 / 109.5)

WARNING: This is an experimental forecast product with no warranty

More information: <https://sidfex.polarprediction.net>

Contact: helge.goessling@awi.de