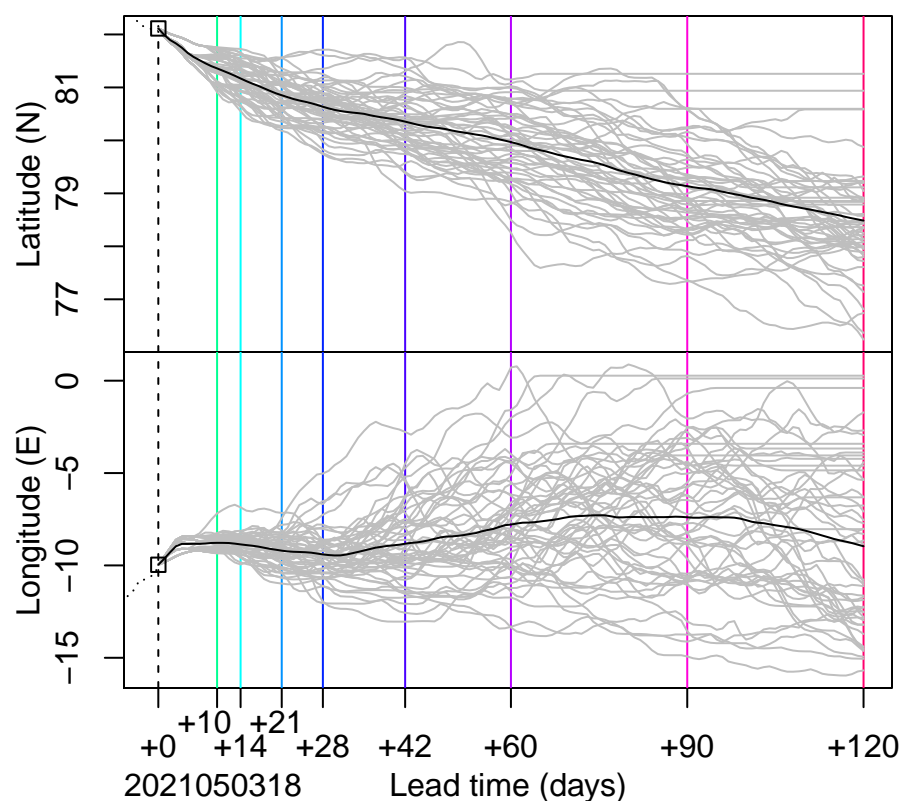
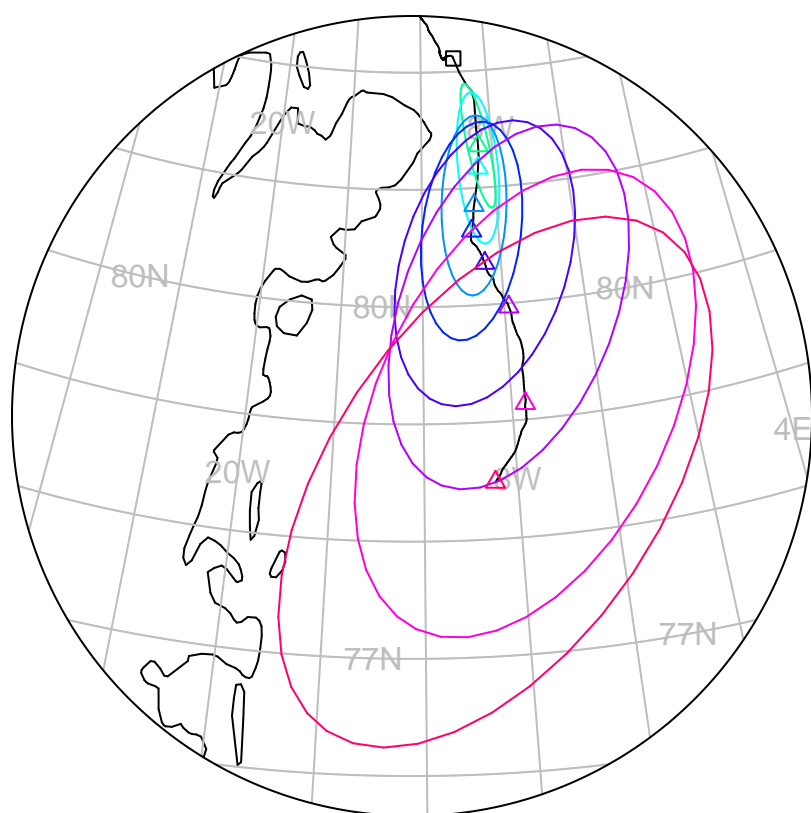


forecast trajectory with 90%-confidence regions  
 observed trajectory (colour=lead-time, see right)



## SIDFEx consensus forecast for the MOSAiC drift

Initial time (YYYYMMDDHH): 2021050318

Consensus forecast version: 20200221v1

Generated at: 2021-123.843

Forecasts included (age relative to initial time / remaining lead time range, both in days):

- |   |                                |
|---|--------------------------------|
| ukmo001v1_cpINWPv1 (0.75 / 9.25)        | ecmwf001_SEAS5 (2.75 / 121.25) |
| ukmo001v1_FOAMv1 (0.75 / 6.25)          |                                |
| ukmo001v1_cpINWP-HRv1 (1.75 / 8.25)     |                                |
| nrI001_gofs3.1-shortrange (1.25 / 5.25) |                                |
| esrI001_SealceVelocity (1.75 / 8.25)    |                                |

**WARNING: This is an experimental forecast product with no warranty**

More information: <https://sidfex.polarprediction.net>

Contact: [helge.goessling@awi.de](mailto:helge.goessling@awi.de)