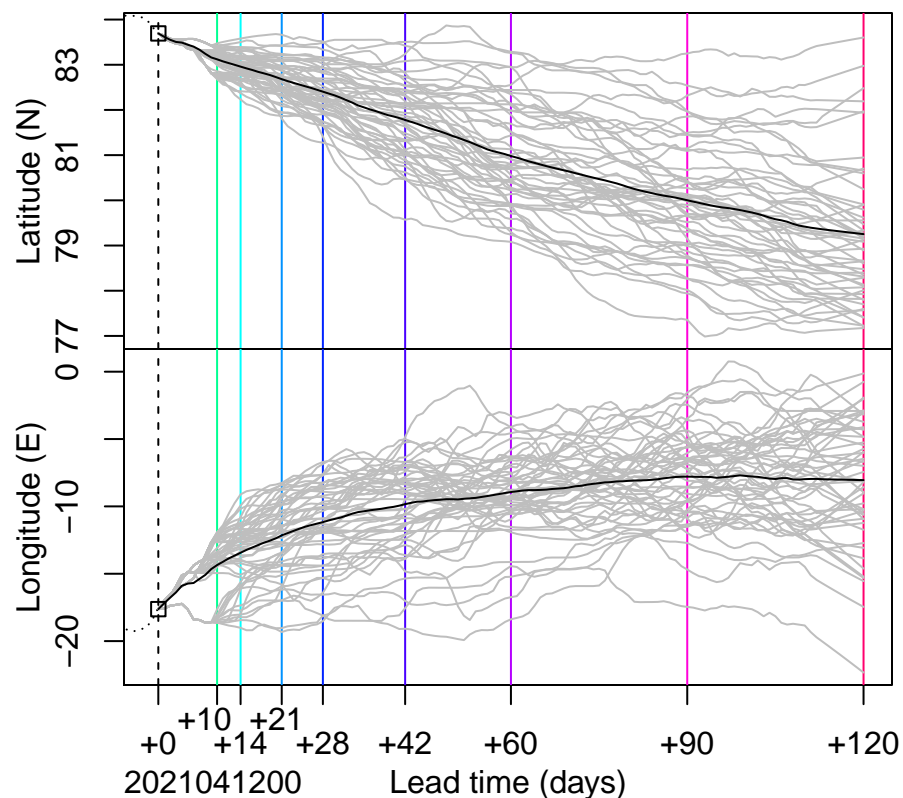
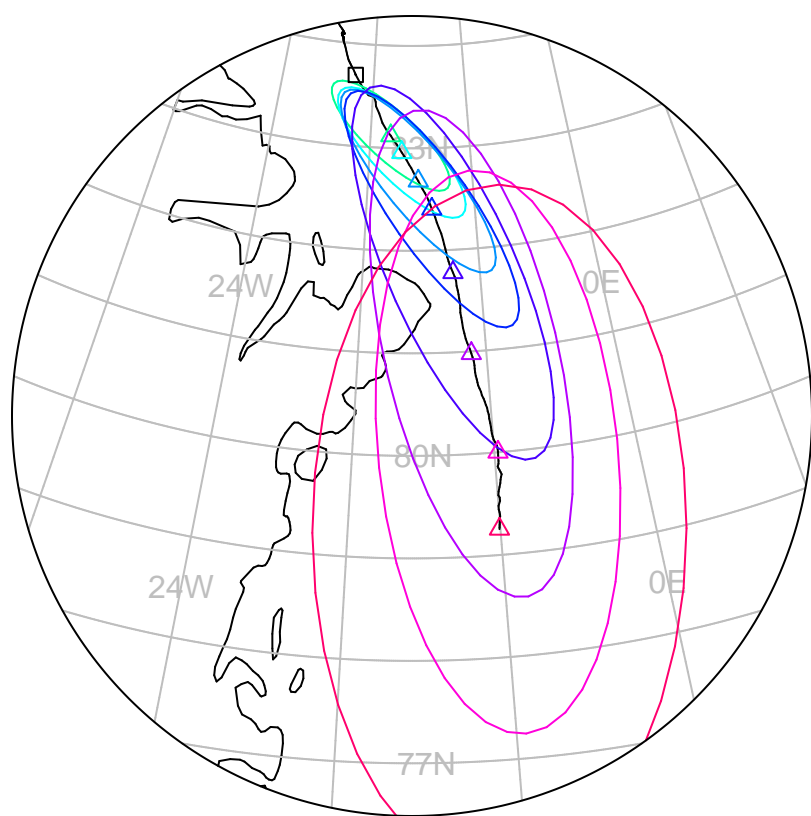


forecast trajectory with 90%-confidence regions  


 observed trajectory (colour=lead-time, see right)



## SIDFEx consensus forecast for the MOSAiC drift

Initial time (YYYYMMDDHH): 2021041200

Consensus forecast version: 20200221v1

Generated at: 2021-102.127

Forecasts included (age relative to initial time / remaining lead time range, both in days):

ukmo001v1\_cpINWPv1 (1 / 9)

ukmo001v1\_FOAMv1 (1 / 6)

ukmo001v1\_cpINWP-HRv1 (2 / 8)

esrl001\_SealceVelocity (1 / 9)

ecmwf001\_SEAS5 (11 / 113)

**WARNING: This is an experimental forecast product with no warranty**

More information: <https://sidfex.polarprediction.net>

Contact: [helge.goessling@awi.de](mailto:helge.goessling@awi.de)