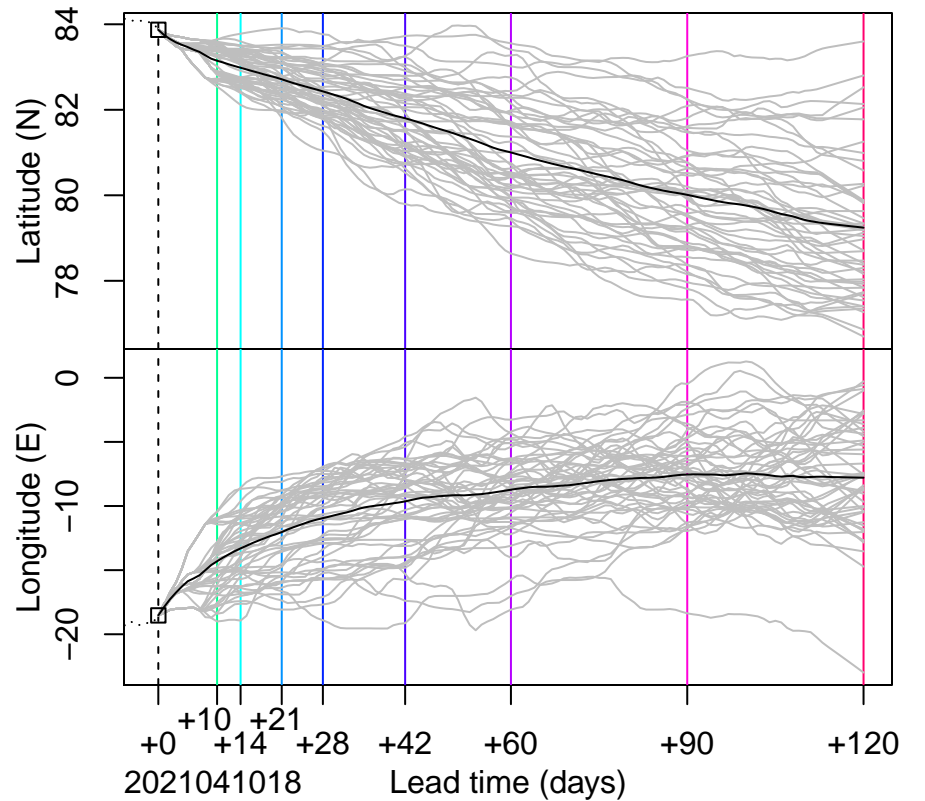
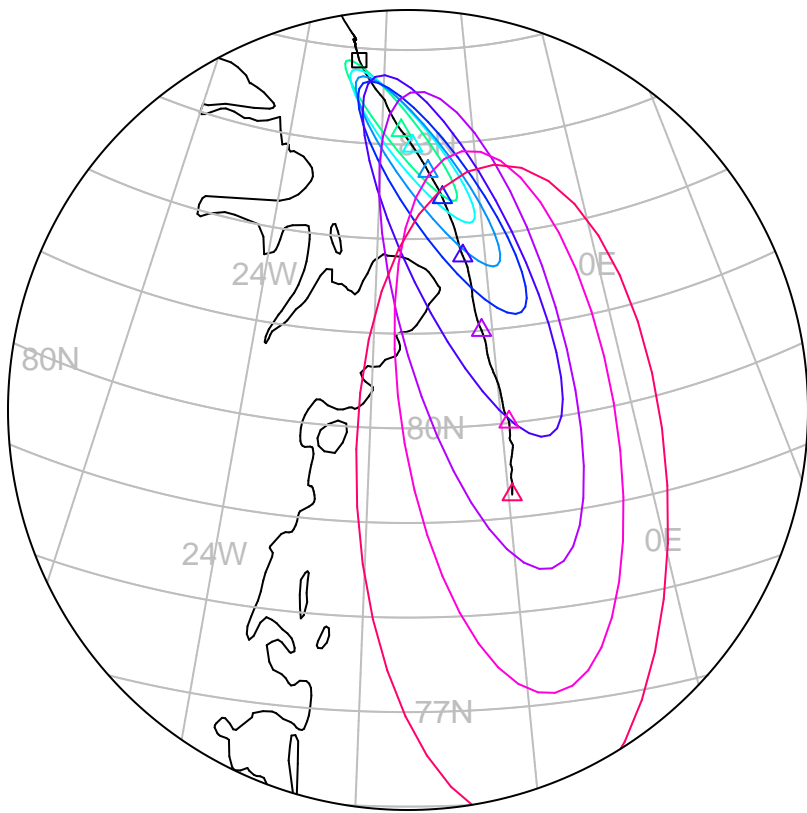


forecast trajectory with 90%–confidence regions
   
 observed trajectory (colour=lead–time, see right)



## SIDFEx consensus forecast for the MOSAiC drift

Initial time (YYYYMMDDHH): 2021041018

Consensus forecast version: 20200221v1

Generated at: 2021–100.783

Forecasts included (age relative to initial time / remaining lead time range, both in days):

ukmo001v1\_cpINWPv1 (0.75 / 9.25)

ecmwf001\_SEAS5 (9.75 / 114.25)

ukmo001v1\_FOAMv1 (0.75 / 6.25)

ukmo001v1\_cpINWP–HRv1 (1.75 / 8.25)

nrI001\_gofs3.1–shortrange (2.25 / 4.25)

esrI001\_SealceVelocity (2.75 / 7.25)

**WARNING: This is an experimental forecast product with no warranty**

More information: <https://sidfex.polarprediction.net>

Contact: [helge.goessling@awi.de](mailto:helge.goessling@awi.de)