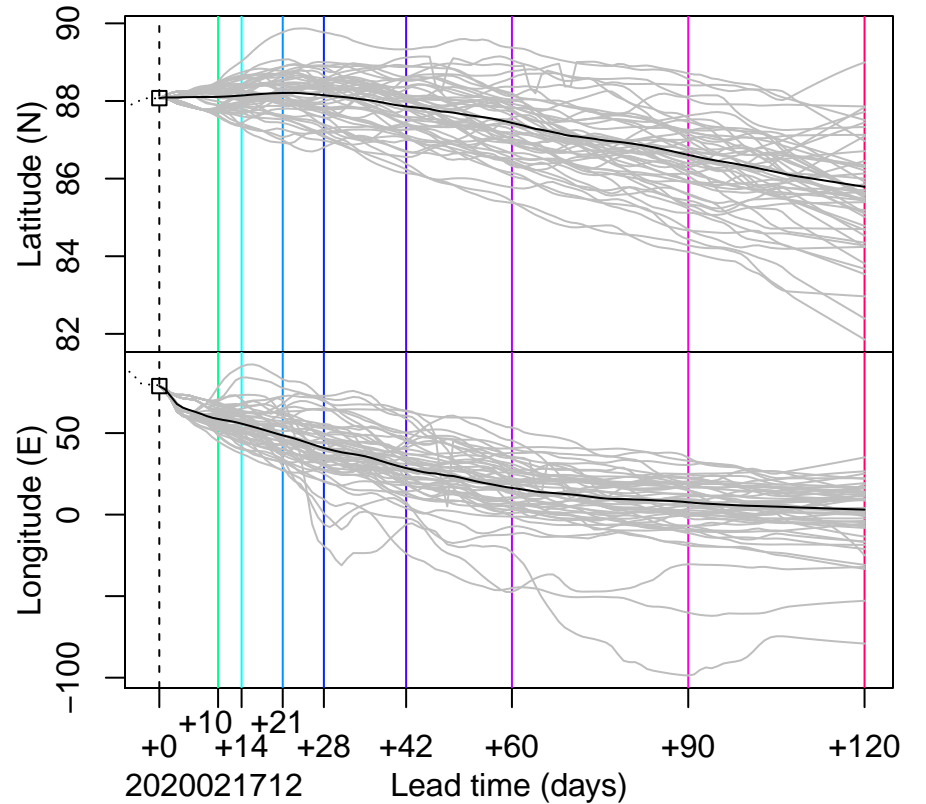
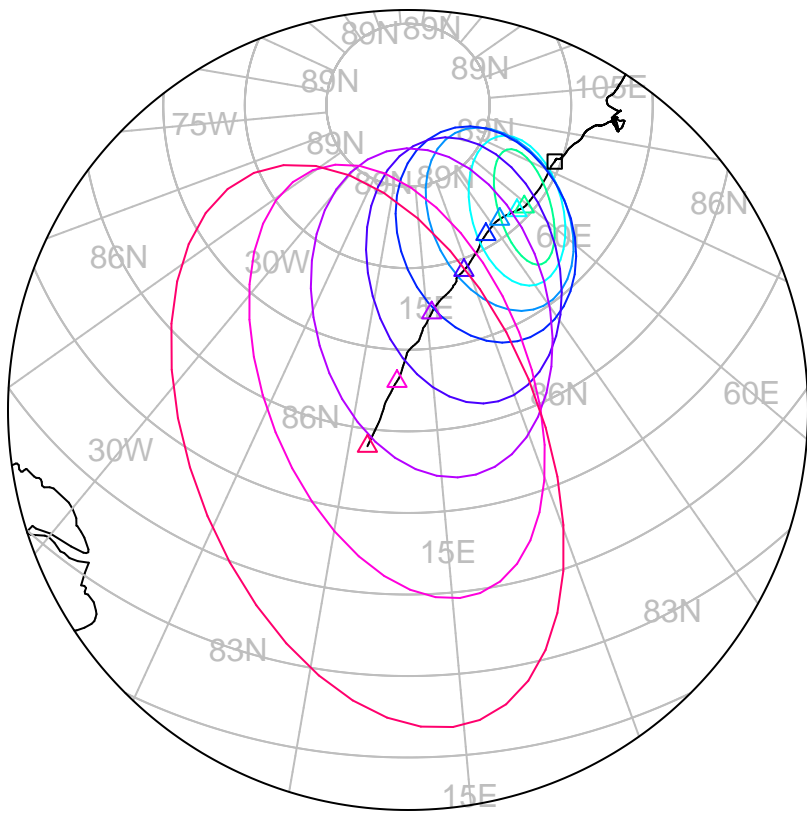


forecast trajectory with 90%–confidence regions
 □ observed trajectory (colour=lead–time, see right)



SIDFEx consensus forecast for the MOSAiC drift

Initial time (YYYYMMDDHH): 2020021712

Consensus forecast version: 20191118v0

Generated at: 2020–48.542

Forecasts included (age relative to initial time / remaining lead time range, both in days):

ukmo001v1_cpINWPv1 (1.5 / 8.5)	esrl001_SealceVelocity (1.5 / 8.5)
ukmo001v1_FOAMv1 (1.5 / 5.5)	ecmwf001_SEAS5 (16.5 / 107.5)
ukmo001v1_cpINWP–HRv1 (2.5 / 7.5)	
nrl001_gofs3.1–shortrange (2 / 4.5)	
ecc001_giops (1.5 / 8.5)	

WARNING: This is an experimental forecast product with no warranty

More information: <https://sidfex.polarprediction.net>

Contact: helge.goessling@awi.de