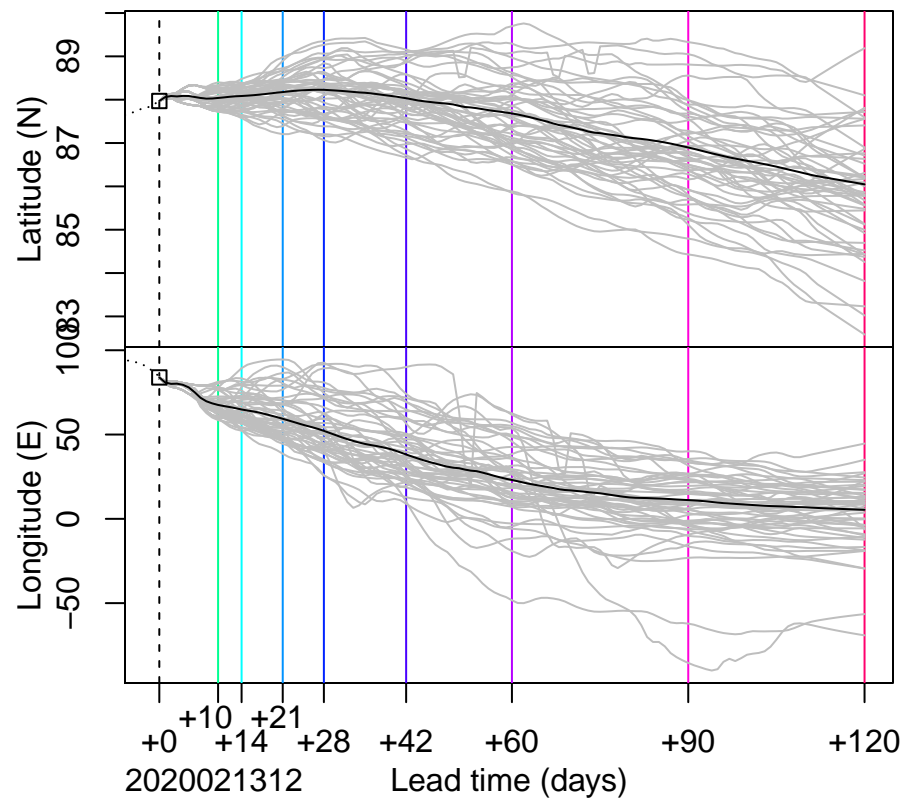
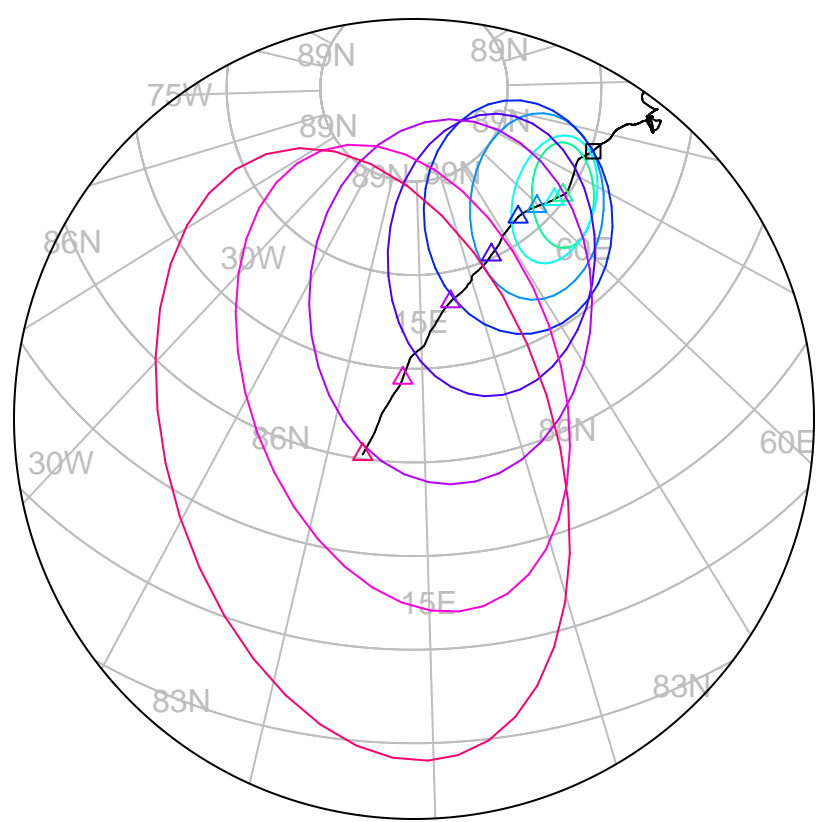


forecast trajectory with 90%–confidence regions
 observed trajectory (colour=lead–time, see right)



SIDFEx consensus forecast for the MOSAiC drift

Initial time (YYYYMMDDHH): 2020021312

Consensus forecast version: 20191118v0
 Generated at: 2020–44.571

- Forecasts included (age relative to initial time / remaining lead time range, both in days):
- ukmo001v1_cpINWPv1 (0.5 / 9.5)
 - ukmo001v1_FOAMv1 (0.5 / 6.5)
 - ukmo001v1_cpINWP–HRv1 (2.5 / 7.5)
 - nrl001_gofs3.1–shortrange (1 / 5.5)
 - eccc001_giops (1.5 / 8.5)
 - esrl001_SealceVelocity (1.5 / 8.5)
 - ecmwf001_SEAS5 (12.5 / 111.5)

WARNING: This is an experimental forecast product with no warranty

More information: <https://sidfex.polarprediction.net>
 Contact: helge.goessling@awi.de